

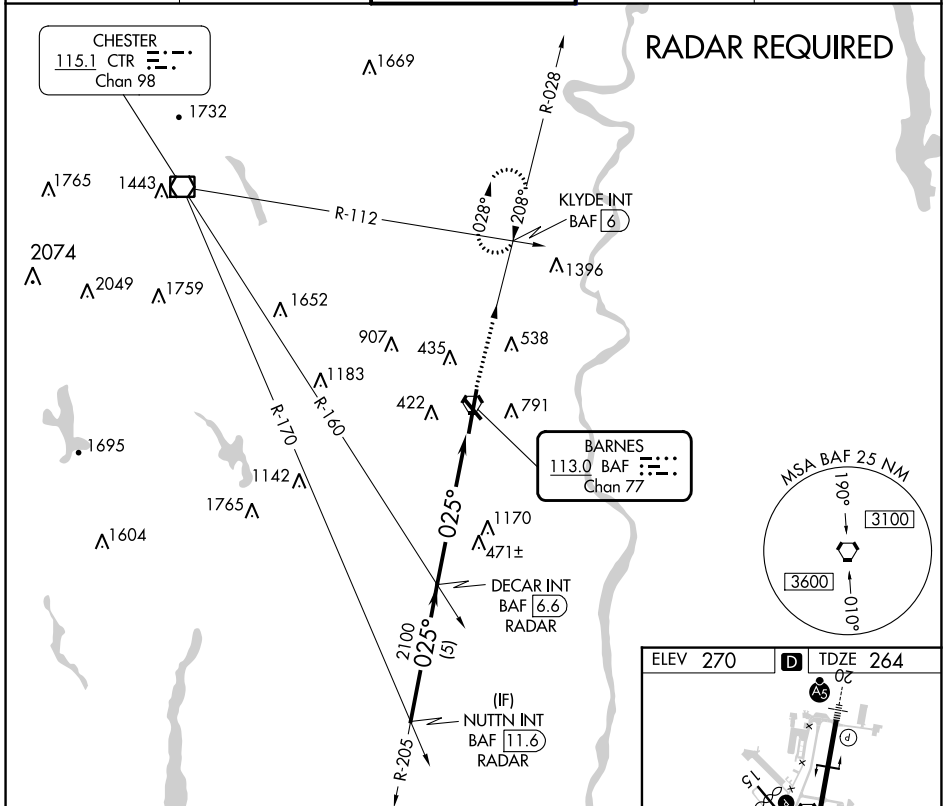
BAF VORTAC 113.0 Chan 77	APP CRS 025°	Rwy Idg TDZE Apt Elev	9000 264 270
---------------------------------------	------------------------	-----------------------------	---

VOR or TACAN RWY 2

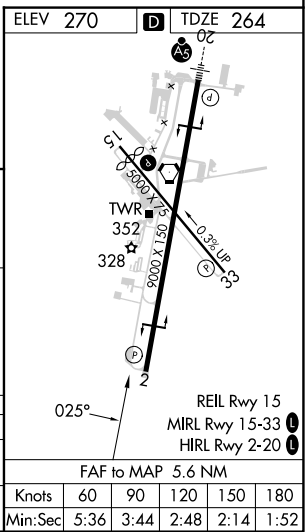
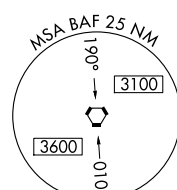
WESTFIELD-BARNES RGNL (BAF)

Night landing: Rwy 15 NA. Helicopter visibility reduction below 3/4 SM NA.	MISSED APPROACH: Climb to 3000 via the BAF VORTAC R-028 to KLYDE INT and hold.
---	--

ATIS 127.1 263.15	BRADLEY APP CON 125.35 281.5	WESTFIELD TOWER* 118.9 (CTAF) 0 251.1	GND CON 121.7 289.4	CLNC DEL 121.7
-----------------------------	--	---	-------------------------------	--------------------------



RADAR REQUIRED



CATEGORY	NUTTN INT BAF 11.6 RADAR		3000		KLYDE INT
	VGSI and descent angles not coincident (VGSI Angle 3.00/TCH 50).		BAF R-028		
S-2	DECAR INT BAF 6.6 RADAR		2100		BAF 1 BAF VORTAC
	3.02° TCH 43		5.6 NM		
CIRCLING	5 NM		5.6 NM		FAF to MAP 5.6 NM
	A	B	C	D	
	780-1	516 (600-1)	780-1½ 516 (600-1½)	780-1¾	516 (600-1¾)
	1160-1¼	890 (900-1¼)	1160-2¾ 890 (900-2¾)	1660-3	1390 (1400-3)

NE-1, 11 JUL 2024 to 08 AUG 2024

NE-1, 11 JUL 2024 to 08 AUG 2024