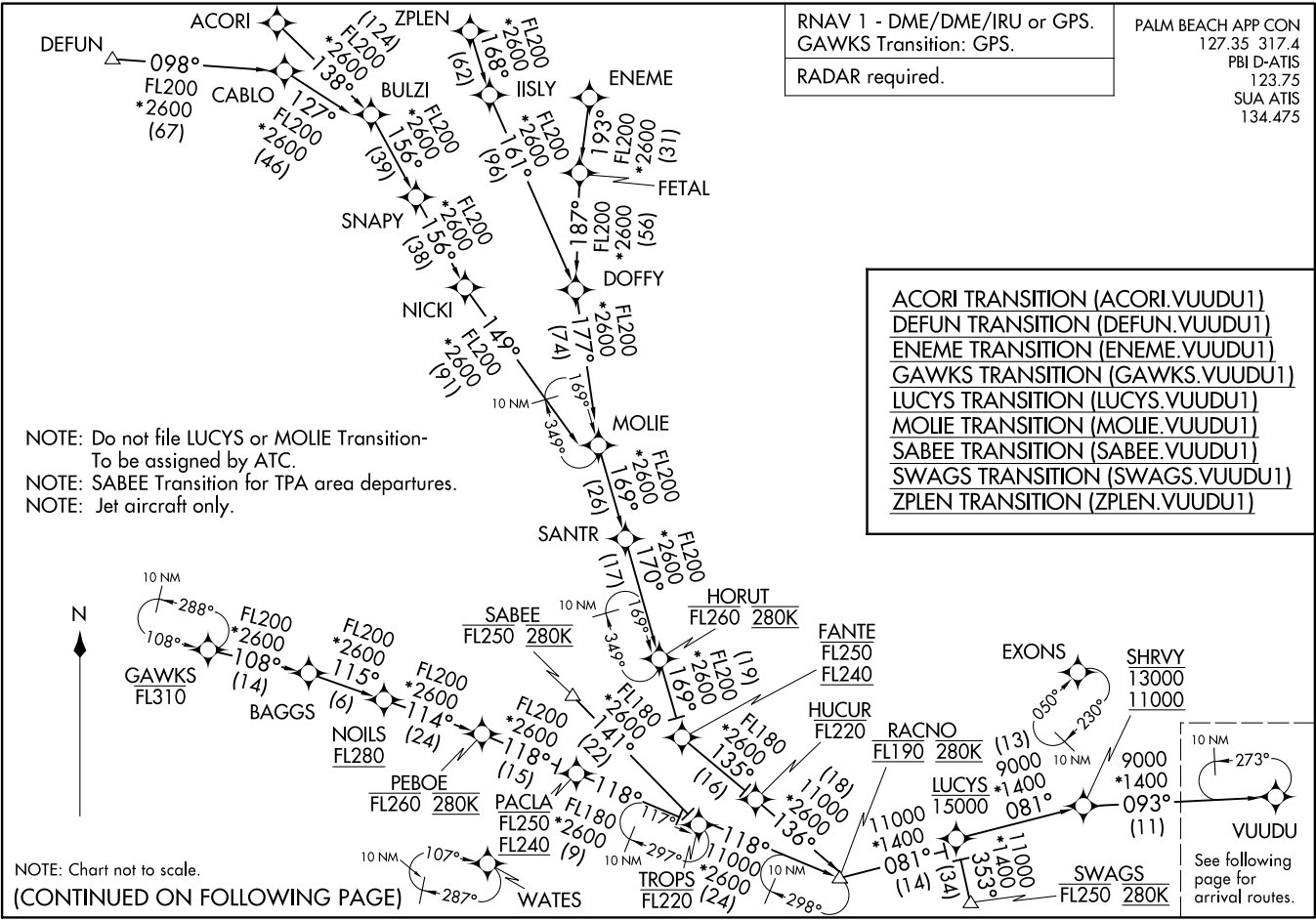


RNAV 1 - DME/DME/IRU or GPS.
GAWKS Transition: GPS.
RADAR required.

PALM BEACH APP CON
127.35 317.4
PBI D-ATIS
123.75
SUA ATIS
134.475

(VUUDU.VUUDU1) 22139
AL-449 (FAA)
WEST PALM BEACH, FLORIDA
Transition Routes

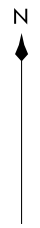
WEST PALM BEACH, FLORIDA
Transition Routes
(VUUDU.VUUDU1) 19MAY22
YUUDU ONE ARRIVAL (RNAV)



NOTE: Do not file LUCYS or MOLIE Transition-
To be assigned by ATC.
NOTE: SABEE Transition for TPA area departures.
NOTE: Jet aircraft only.

NOTE: Chart not to scale.
(CONTINUED ON FOLLOWING PAGE)

RNAV 1 - DME/DME/IRU or GPS.
RADAR required.



NOTE: Jet aircraft only.

PALM BEACH APP CON
127.35 317.4
PBI D-ATIS
123.75
SUA ATIS
134-475

MSQTO
Ldg KSUA

WITHAM FLD

TARTY
11000 250K
9000

SHZAM
Ldg 06FA/F45

WILLIAM P GWINN
(Pvt)

NORTH PALM BEACH COUNTY
GENERAL AVIATION

10 NM
273°
093°
093°
VUUDU
OULLL
9000 250K

(3)
093°
(3)

(12)
090°

HLIBT
9000

GULLO
5000
Ldg KPBI Rwy's 10L/14

(6)
117°
(10)

JANDS
8000

BEKAH
6000

099°
(8)

COTEB
6000 210K

Ldg KPBI Rwy's 28R/32

150°
(15)

VETCH

111°
(12)

SCALE

099°
(6)

DIVRR
Ldg KBCT

BOCA RATON

PALM BEACH INTL

NOTE: Chart not to scale.

(NARRATIVE ON FOLLOWING PAGE)

VUUDU ONE ARRIVAL (RNAV)
(VUUDU, VUUDU1) 19MAY22

Arrival Routes

WEST PALM BEACH, FLORIDA

(VUUDU, VUUDU1) 23222
VUUDU ONE ARRIVAL (RNAV)

Arrival Routes
AL-449 (FAA)

WEST PALM BEACH, FLORIDA

ARRIVAL ROUTE DESCRIPTION

KPBI: From VUUDU on track 093° to cross TARTY between 9000 and 11000 and at 250K, then on track 116° to cross HLIBT at or below 9000.

LANDING KPBI RUNWAYS 10L, 14: From HLIBT on track 117° to cross GULLO at 5000. Expect ILS or LOC RWY 10L, RNAV (RNP) Z RWY 14 approach.

LANDING KPBI RUNWAYS 28R, 32: From HLIBT on track 118° to cross JANDS at or above 8000, then on track 118° to cross BEKAH at 6000, then on track 099° to cross COTEB at 6000 and at 210K, then on track 099°. Expect RADAR vectors to final approach course.

LANDING 06FA/F45: From VUUDU on track 093° to cross OWLLL at 9000 and at 250K, then on track 090° to SHZAM, then on heading 091°. Expect RADAR vectors to final approach course.

LANDING KBCT: From VUUDU on track 093° to cross OWLLL at 9000 and at 250K, then on track 159° to VETCH, then on track 111° to SCALE, then on track 099° to DIVRR, then on track 099°. Expect RADAR vectors to final approach course.

LANDING KSUA: From VUUDU on track 093° to cross OWLLL at 9000 and at 250K, then on track 032° to MSQTO, then on heading 050°. Expect RADAR vectors to final approach course.

SE-3, 11 JUL 2024 to 08 AUG 2024

SE-3, 11 JUL 2024 to 08 AUG 2024