

APP CRS **272°**
Rwy Idg **9817**
TDZE **469**
App Elev **491**

RNAV (GPS) RWY 27

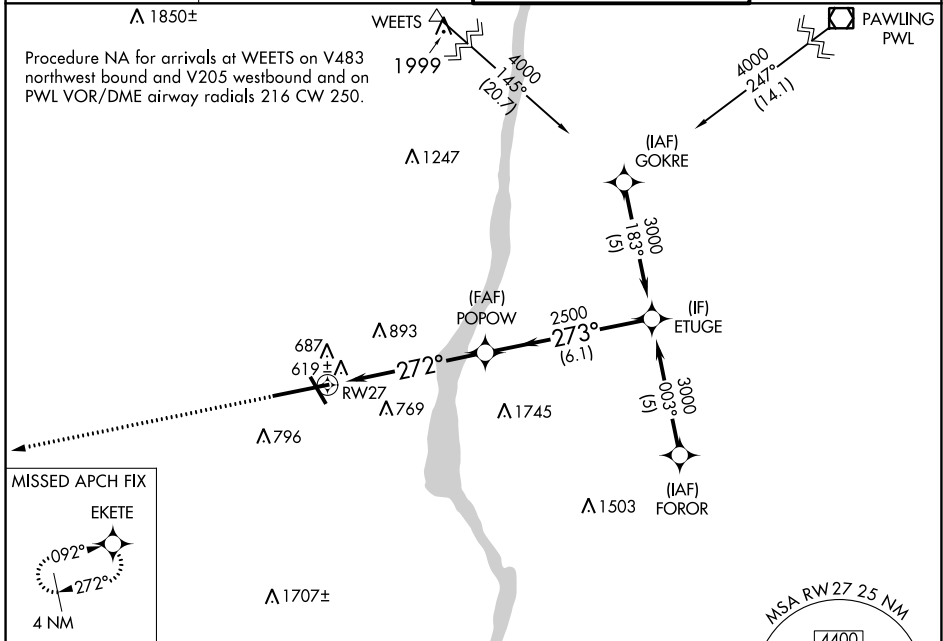
NEW YORK STEWART INTL (SWF)

RNP APCH.

For uncompensated Baro-VNAV systems, LNAV/VNAV NA below -15°C or above 54°C.

MISSED APPROACH: Climb to 3000 direct EKETE and hold.

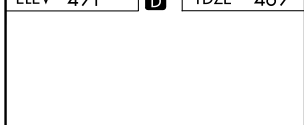
ATIS 124.575	NEW YORK APP CON 132.75 363.1	STEWART TOWER 121.0 254.4	GND CON 121.9
------------------------	---	-------------------------------------	-------------------------



NE-2, 11 JUL 2024 to 08 AUG 2024

NE-2, 11 JUL 2024 to 08 AUG 2024

ELEV **491** **D** TDZE **469**



	<p>3000 EKETE</p> <p>POPOW 2500</p> <p>ETUTE 3000</p> <p>Procedure Turn NA</p> <p>GP 3.00° TCH 55</p>
<p>*LNAV only.</p> <p>*1.5 NM to RW27</p>	
<p>1.5 NM</p> <p>4.6 NM</p> <p>6.1 NM</p>	
CATEGORY	A B C D
LNAV/DA VNAV	1048-2 579 (600-2)
LNAV MDA	1000-1 531 (600-1) 1000-1½ 531 (600-1½) 1200-2 1200-2½ 709 (800-2) 709 (800-2½)
C CIRCLING	1200-1 709 (800-1)