

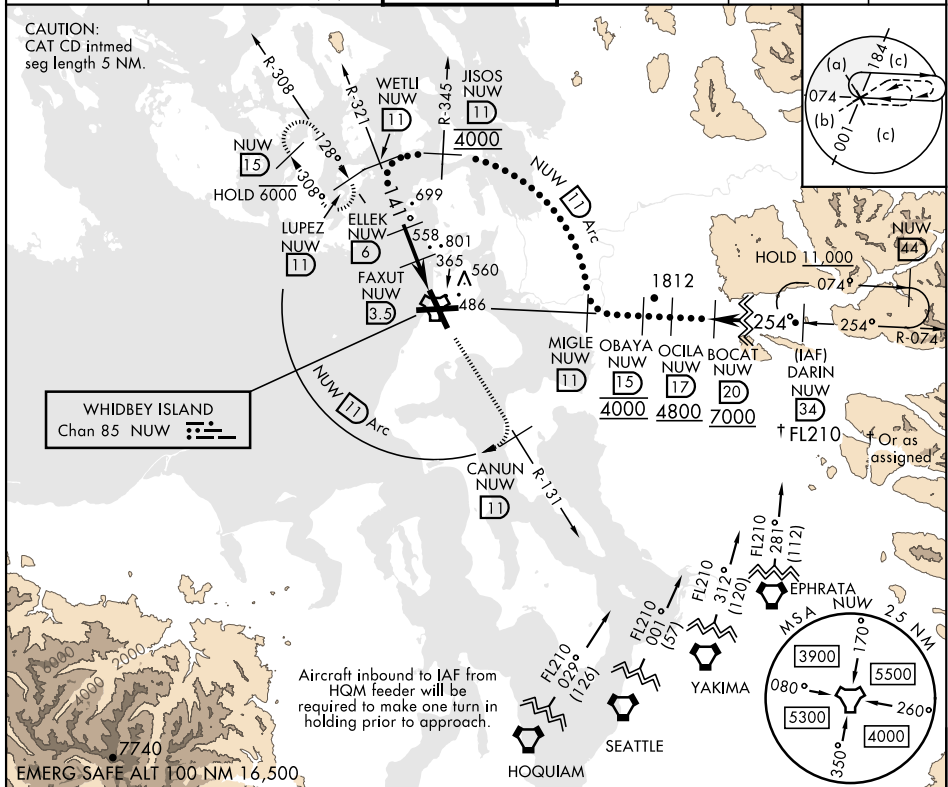
TACAN NUW Chan <b>85</b>	APCH CRS <b>141°</b>	Rwy ldg TDZE <b>8000</b> <b>39</b> Arprt Elev <b>47</b>	AL-451 [USN]	WHIDBEY ISLAND NAS (AULT FLD) (KNUW)
-----------------------------	-------------------------	---	--------------	--------------------------------------

\* When ALS inop, increase vis to 1½ miles.

ALS-2

MISSED APPROACH: Climb to 4000 via NUW TACAN R-131 to CANUN, then arc SW of NUW TACAN via 11 DME Arc to LUPEZ and hold.

ATIS <b>134.15 281.5</b>	WHIDBEY APP CON <b>120.7 270.8</b> (E) <b>118.2 285.65</b> (W)	WHIDBEY TOWER <b>127.9 340.2</b>	GND CON <b>121.75 336.4</b>	CLNC DEL <b>135.1 379.9</b>	ASR/PAR
-----------------------------	--	-------------------------------------	--------------------------------	--------------------------------	---------



	WETLI R-321 11	ELLEK 6	FAXUT 3.5	JOVPO 0.8	TACAN	4000 NUW R-131	CANUN NUW 11	NUW 11 Arc	ELEV 47	TDZE 39
	3000	1800	1020						141°	8000 x 200
			2.5 NM	2.7 NM					25	32
CATEGORY	C	D	E							
S-14*	480-7/8	441	(500-7/8)							
CIRCLING	900-2½ 853 (900-2½)	900-2¾ 853 (900-2¾)	1200-3 1153 (1200-3)	HIRL Rwy 7-25, 14-32 TDZL/CL Rwy 14						

NW-1, 11 JUL 2024 to 08 AUG 2024

NW-1, 11 JUL 2024 to 08 AUG 2024