

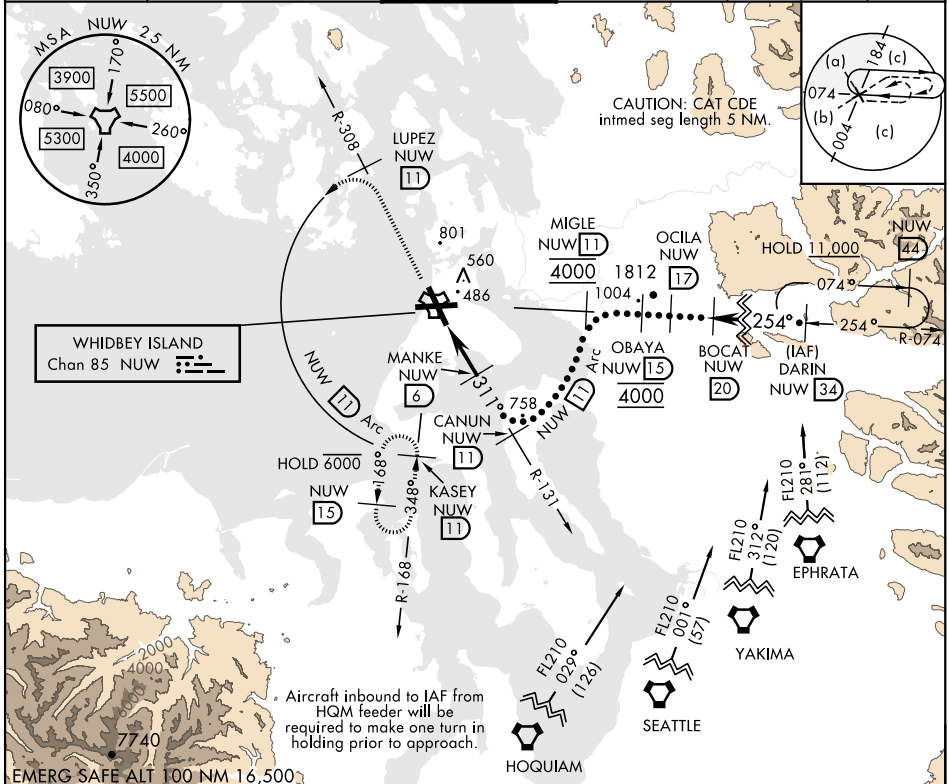
HI-TACAN Z RWY 32

TACAN Chan 85	NUW	APCH CRS 311°	Rwy ldg TDZE Arpt Elev 8000 47 47	AL-451 [USN]	WHIDBEY ISLAND NAS (AULT FLD) (KNUW)
-------------------------	-----	-------------------------	---	--------------	--------------------------------------

▼ * When ALS inop, increase CAT CDE vis to 1 3/4 miles.

ALSF-2 MISSED APPROACH: Climb to 3000 via NUW TACAN R-308 to LUPEZ, then arc W of NUW via 11 DME Arc to KASEY and hold.

ATIS 134.15 281.5	WHIDBEY APP CON 120.7 270.8 (EAST) 118.2 285.65 (WEST)	WHIDBEY TOWER 127.9 340.2	GND CON 121.75 336.4	CLNC DEL 135.1 379.9	ASR/PAR
-----------------------------	--	-------------------------------------	--------------------------------	--------------------------------	---------



3000 ↑ NUW R-308	LUPEZ NUW 11	NUW Arc 11	DARIN R-074 NUW 34	ELEV 47	TDZE 47						
TACAN	NAVOE 1.8	MANKE 2.6	CANUN R-131 11	MIGLE R-074 11	OBAYA 15	BOCAT 20	OCILA 17	BOCAT 20	DARIN R-074 NUW 34	FL 210	↑ Or as assigned
4.2 NM		1800	311°	3000 Arc 11	4000	4000	4800	7000	254°	3.16° TCH 55	
CATEGORY	C		D		E						
S-32*	680-1 3/8		633 (700-1 3/8)								
CIRCLING	900-2 1/2 853 (900-2 1/2)		900-2 3/4 853 (900-2 3/4)		1200-3 1153 (1200-3)		TDZL/CL Rwy 14 HIRL Rwy 7-25, 14-32 311°				

OAK HARBOR, WASHINGTON 48° 21' N-122° 39' W WHIDBEY ISLAND NAS (AULT FLD) (KNUW)

HI-TACAN Z RWY 32

NW-1, 11 JUL 2024 to 08 AUG 2024

NW-1, 11 JUL 2024 to 08 AUG 2024