

# ILS or LOC/DME RWY 14

LOC/DME I-NUW <b>110.1</b> Chan <b>38</b>	APCH CRS <b>137°</b>	Rwy Idg <b>8000</b> TDZE <b>39</b> Arprt Elev <b>47</b>
---	-------------------------	---

AL-451 [USN]

WHIDBEY ISLAND NAS (AULT FLD) (KNUW)

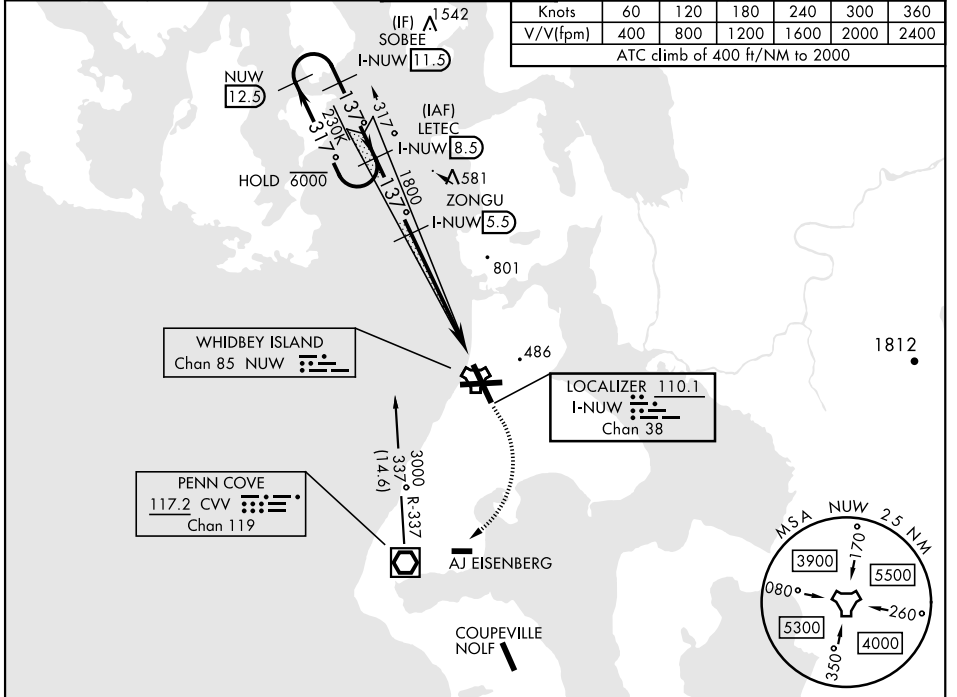
VOR, DME required  
 \* When ALS inop, increase vis to 3/4 mile.  
 \*\* When ALS inop, increase CAT AB vis to 1 mile;  
 CAT CDE vis to 1 1/8 mile.



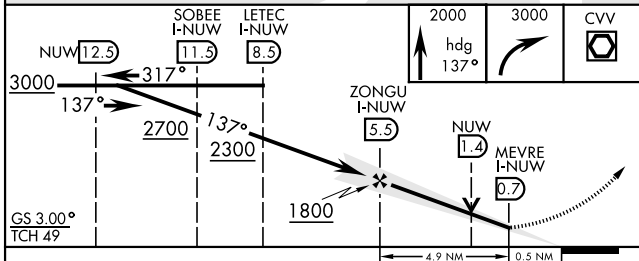
MISSED APPROACH: Climb to 2000 via hdg 137°, then climbing right turn to 3000, direct CVV VOR/DME, then via CVV R-337 to LETEC and hold.

ATIS <b>134.15 281.5</b>	WHIDBEY APP CON <b>120.7 270.8 (E)</b> <b>118.2 285.65 (W)</b>	WHIDBEY TOWER <b>127.9 340.2</b>	GND CON <b>121.75 336.4</b>	CLNC DEL <b>135.1 379.9</b>	ASR/PAR
-----------------------------	--	-------------------------------------	--------------------------------	--------------------------------	---------

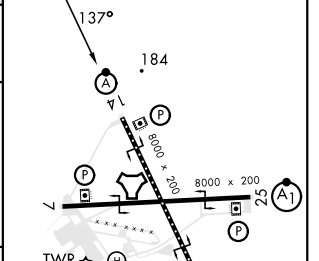
Knots	60	120	180	240	300	360
V/V(fpm)	400	800	1200	1600	2000	2400
ATC climb of 400 ft/NM to 2000						



EMERG SAFE ALT 100 NM 16,500



ELEV 47	TDZE 39
---------	---------



CATEGORY	A	B	C	D	E
S-ILS 14 *	239-1/2		200	(200-1/2)	
S-LOC 14 **	420-1/2	381	420-5/8		381 (400-5/8)
CIRCLING	700-1	800-1	900-2 1/2	900-2 3/4	1200-3
	653 (700-1)	753 (800-1)	853 (900-2 1/2)	853 (900-2 3/4)	1153 (1200-3)

HIRL Rwy 7-25, 14-32  
 TDZL/CL Rwy 14

# ILS or LOC/DME RWY 14

NW-1, 11 JUL 2024 to 08 AUG 2024

NW-1, 11 JUL 2024 to 08 AUG 2024