

OAK HARBOR, WASHINGTON

# RNAV (GPS) RWY 14

WAAS CH <b>50004</b> W14A	APCH CRS <b>137°</b>	Rwy ldg TDZE Arpt Elev	<b>8000</b> <b>39</b> <b>47</b>
---------------------------------	-------------------------	------------------------------	---------------------------------------

AL-451 (USN)

WHIDBEY ISLAND NAS (AULT FLD) (KNUW)

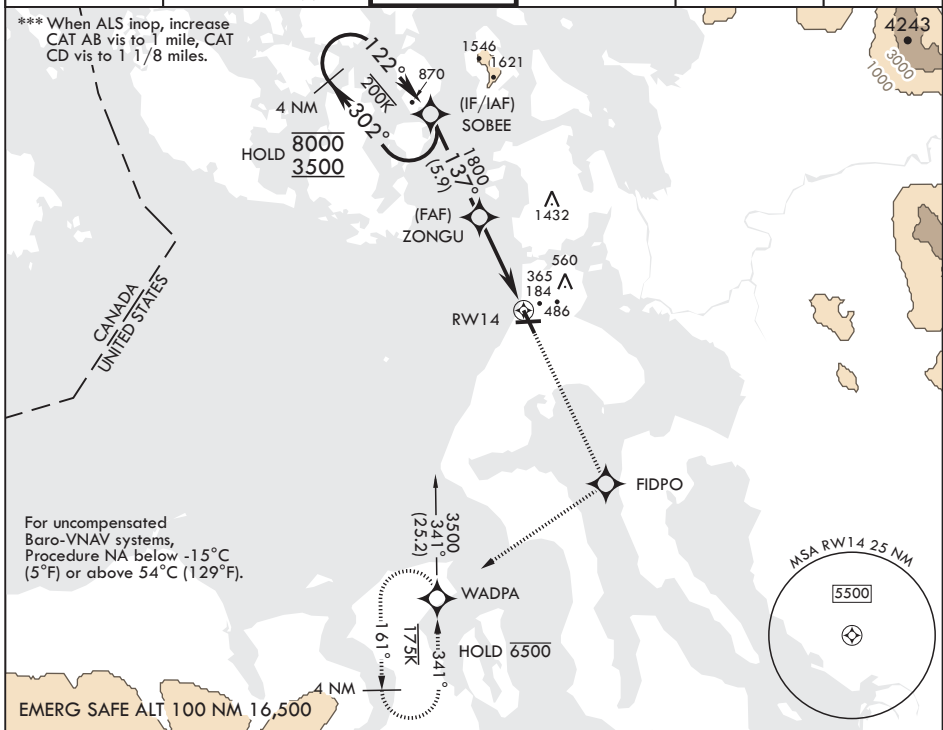
RNP APCH

▼ \* When ALS inop, increase vis to 3/4 mile.  
\*\* When ALS inop, increase CAT A vis to 3/4 mile, CAT BCD vis to 7/8 mile.

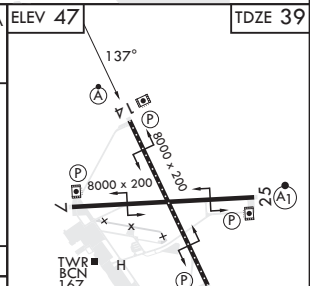
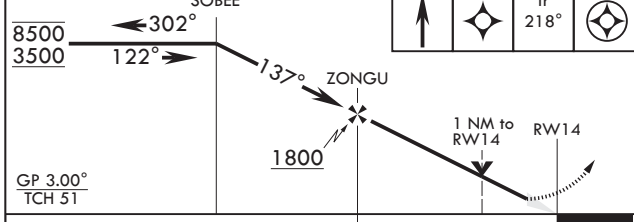
ALS-F-2

MISSED APPROACH: Climb to 3500 direct FIDPO, and on track 218° to WADPA and hold. Do not exceed 230K.

ATIS <b>134.15 281.5</b>	APP CON/DEP CON <b>118.2 285.65 (W)</b> <b>120.7 270.8 (E)</b>	TOWER <b>127.9 340.2</b>	GND CON <b>121.75 336.4</b>	CLNC DEL <b>135.1 379.9</b>	ASR/PAR
-----------------------------	--	-----------------------------	--------------------------------	--------------------------------	---------



4 NM holding pattern      SOBEE      3500      FIDPO      tr 218°      WADPA      ELEV 47      TDZE 39



CATEGORY	A	B	C	D	
LPV DA*	239-1/2		200	(200-1/2)	
LNAV/VNAV DA**	292-1/2 253 (300-1/2)	313-1/2 274 (300-1/2)	327-1/2 288 (300-1/2)	342-1/2 303 (700-1/2)	
LNAV MDA***	420-1/2	381 (400-1/2)	420-5/8	381 (400-5/8)	
◻ CIRCLING	700-1 653 (700-1)	800-1 753 (800-1)	900-2 1/2 853 (900-2 1/2)	900-2 3/4 853 (900-2 3/4)	

HIRL all Rwys  
TDZL/CL Rwy 14

OAK HARBOR, WASHINGTON

48°21'N - 122°39'W

WHIDBEY ISLAND NAS (AULT FLD) (KNUW)

Amdt 4 22APR21

# RNAV (GPS) RWY 14

NW-1, 11 JUL 2024 to 08 AUG 2024

NW-1, 11 JUL 2024 to 08 AUG 2024