

OAK HARBOR, WASHINGTON

# RNAV (GPS) RWY 32

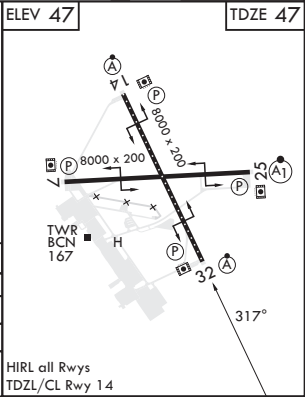
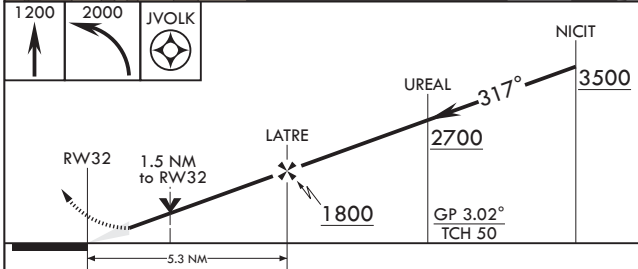
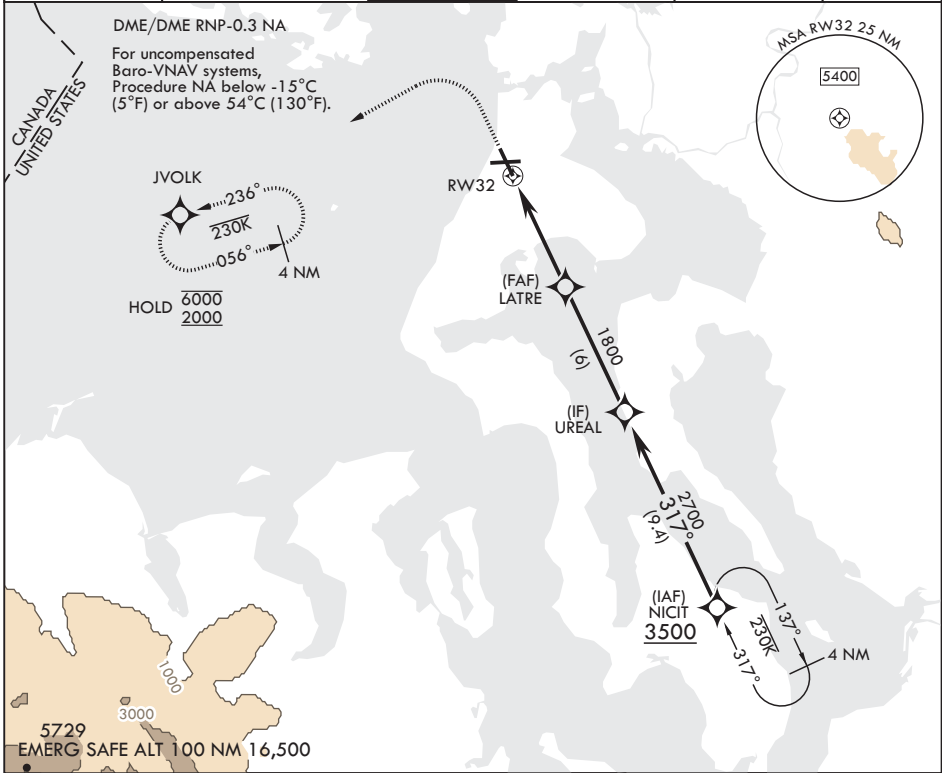
APCH CRS	Rwy Idg	<b>8000</b>
<b>317°</b>	TDZE	<b>47</b>
	Arpt Elev	<b>47</b>

AL-451 (USN) WHIDBEY ISLAND NAS (AULT FLD) (KNUW)

**V** \* When ALS inop, increase vis to 1 3/8 miles.  
 \*\* When ALS inop, increase CAT AB vis to 1 mile, CAT CD vis to 1 1/2 miles.

ALSF-2 MISSED APPROACH: Climb to 1200 then climbing left turn to 2000 direct JVOLK and hold.

ATIS <b>134.15 281.5</b>	APP CON/DEP CON <b>118.2 285.65 (W) 120.7 270.8 (E)</b>	TOWER <b>127.9 340.2</b>	GND CON <b>121.75 336.4</b>	CLNC DEL <b>135.1 379.9</b>	ASR/PAR
-----------------------------	--	-----------------------------	--------------------------------	--------------------------------	---------



CATEGORY	A	B	C	D
LNAV/VNAV DA*	492-7/8		445	(500-7/8)
LNAV MDA**	580-1/2	533 (600-1/2)	580-1	533 (600-1)
CRCLING	700-1 653 (700-1)	800-1 753 (800-1)	900-2 1/2 853 (900-2 1/2)	900-2 3/4 853 (900-2 3/4)

HIRL all Rwys  
TDZL/CL Rwy 14

OAK HARBOR, WASHINGTON

48°21'N - 122°39'W

WHIDBEY ISLAND NAS (AULT FLD) (KNUW)

Amdt 1 21MAY20

# RNAV (GPS) RWY 32

NW-1, 11 JUL 2024 to 08 AUG 2024

NW-1, 11 JUL 2024 to 08 AUG 2024