

OAK HARBOR, WASHINGTON

# TACAN Y RWY 25

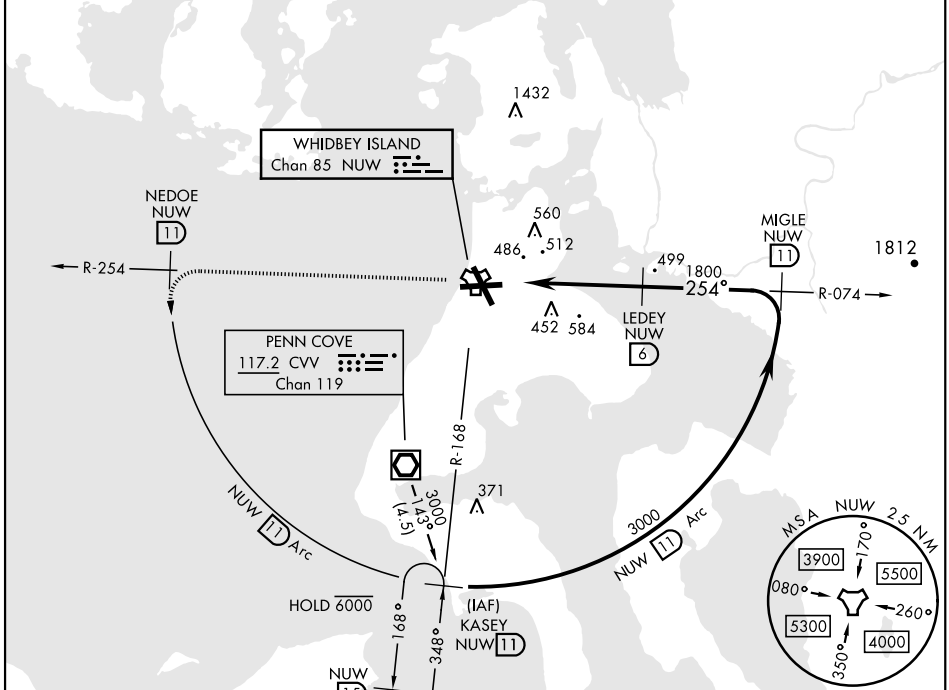
TACAN NUW Chan <b>85</b>	APCH CRS <b>254°</b>	Rwy ldg TDZE Arprt Elev <b>8000</b> <b>28</b> <b>47</b>
-----------------------------	-------------------------	--

AL-451 [USN]

WHIDBEY ISLAND NAS (AULT FLD) (KNUW)

<p>▼ * When ALS inop, increase CAT AB vis to 1 mile, CAT CD to 2 miles.</p> <p>ALS-F-1 A1</p>	<p>MISSED APPROACH: Climb to 3000 via NUW TACAN R-254 to NEDOE, then arc SW of NUW via 11 DME Arc to KASEY and hold.</p>				
	<p>ATIS <b>134.15 281.5</b></p>	<p>WHIDBEY APP CON <b>120.7 270.8 (E)</b> <b>118.2 285.65 (W)</b></p>	<p>WHIDBEY TOWER <b>127.9 340.2</b></p>	<p>GND CON <b>121.75 336.4</b></p>	<p>CLNC DEL <b>135.1 379.9</b></p>

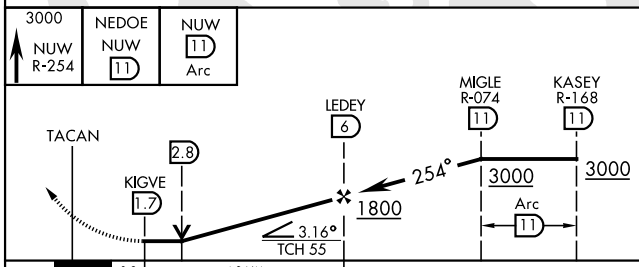
CAUTION: CAT CD intmed seg length 5 NM.



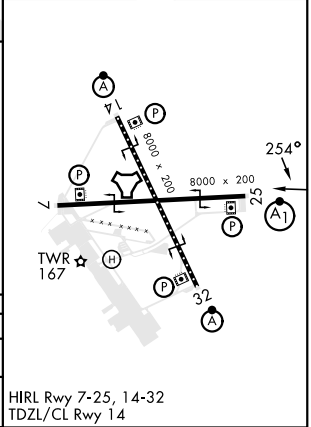
NW-1, 11 JUL 2024 to 08 AUG 2024

NW-1, 11 JUL 2024 to 08 AUG 2024

EMERG SAFE ALT 100 NM 16,500



ELEV 47	TDZE 28
---------	---------



CATEGORY	A	B	C	D
S-25*	740- $\frac{3}{8}$ 712 (700- $\frac{3}{8}$ )		740- $1\frac{1}{8}$ 712 (700- $1\frac{1}{8}$ )	
CIRCLING	760-1 713 (800-1)	800-1 753 (800-1)	900- $2\frac{1}{2}$ 853 (900- $2\frac{1}{2}$ )	900- $2\frac{3}{4}$ 853 (900- $2\frac{3}{4}$ )

HIRL Rwy 7-25, 14-32  
TDZL/CL Rwy 14

OAK HARBOR, WASHINGTON

48° 21' N 122° 39' W

WHIDBEY ISLAND NAS (AULT FLD) (KNUW)

Amtd 3 02DEC21

# TACAN Y RWY 25