

OAK HARBOR, WASHINGTON

# TACAN Y RWY 7

TACAN Chan <b>85</b>	NUW	APCH CRS <b>058°</b>	Rwy Idg TDZE Arprt Elev <b>8000</b> <b>25</b> <b>47</b>
-------------------------	-----	-------------------------	--

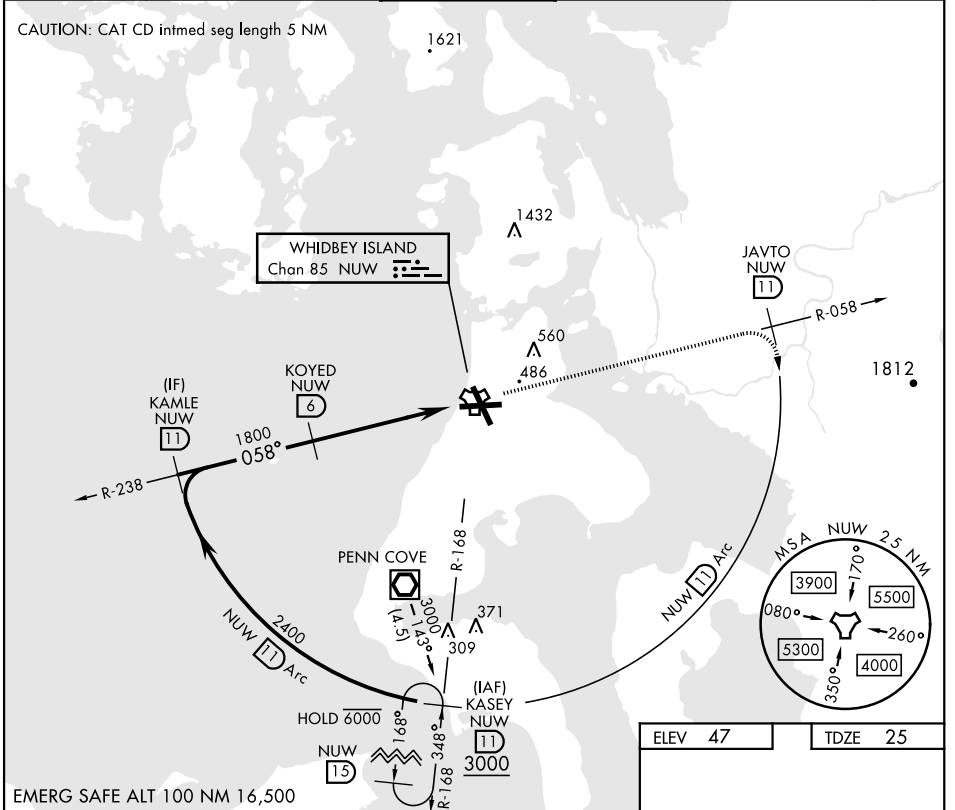
AL-451 [USN]

WHIDBEY ISLAND NAS (AULT FLD) (KNUW)

**▽** MISSED APPROACH: Climb to 3000 via NUW TACAN R-058 to JAVTO, then arc SE of NUW via 11 DME Arc to KASEY and hold.

ATIS <b>134.15 281.5</b>	WHIDBEY APP CON <b>120.7 270.8 (E)</b> <b>118.2 285.65 (W)</b>	WHIDBEY TOWER <b>127.9 340.2</b>	GND CON <b>121.75 336.4</b>	CLNC DEL <b>135.1 379.9</b>	ASR/PAR
-----------------------------	--	-------------------------------------	--------------------------------	--------------------------------	---------

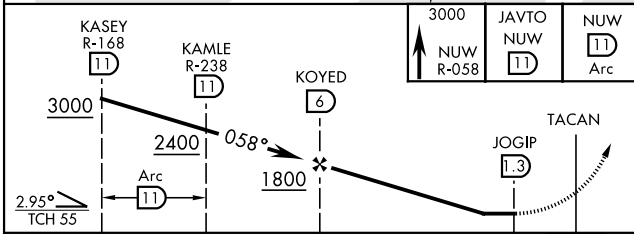
CAUTION: CAT CD intmed seg length 5 NM



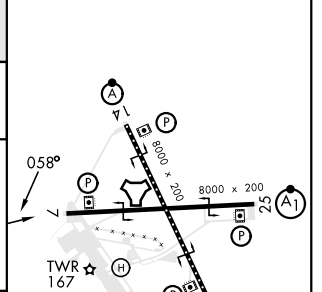
NW-1, 11 JUL 2024 to 08 AUG 2024

NW-1, 11 JUL 2024 to 08 AUG 2024

EMERG SAFE ALT 100 NM 16,500



ELEV 47	TDZE 25
---------	---------



CATEGORY	A	B	C	D
S-7		400-1	375 (400-1)	
CIRCLING	760-1 713 (800-1)	800-1 753 (800-1)	900-2½ 853 (900-2½)	900-2¾ 853 (900-2¾)

HIRL Rwy 7-25, 14-32  
TDZL/CL Rwy 14

OAK HARBOR, WASHINGTON

48°21'N-122°39'W

WHIDBEY ISLAND NAS (AULT FLD) (KNUW)

Amdt 3 07OCT21

# TACAN Y RWY 7