

WICHITA, KANSAS

# TACAN RWY 1R

TACAN IAB Chan 112	APCH CRS 005°	Rwy Idg TDZE Arprt Elev	12,007 1347 1372
-----------------------	------------------	-------------------------------	------------------------

-(USAF)

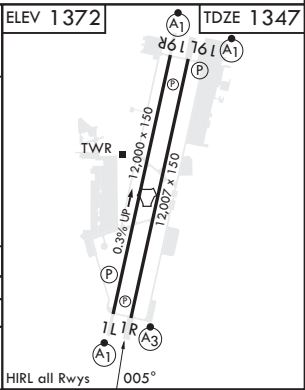
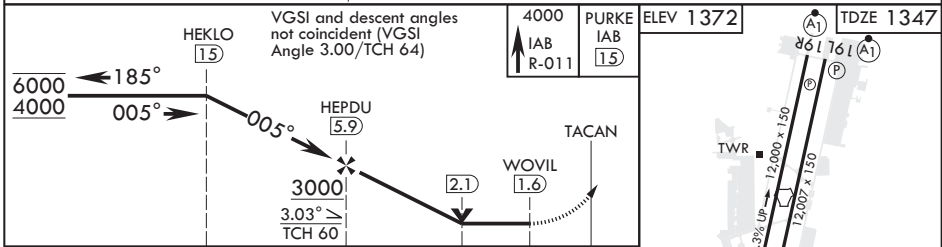
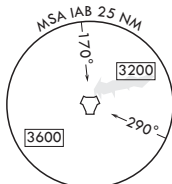
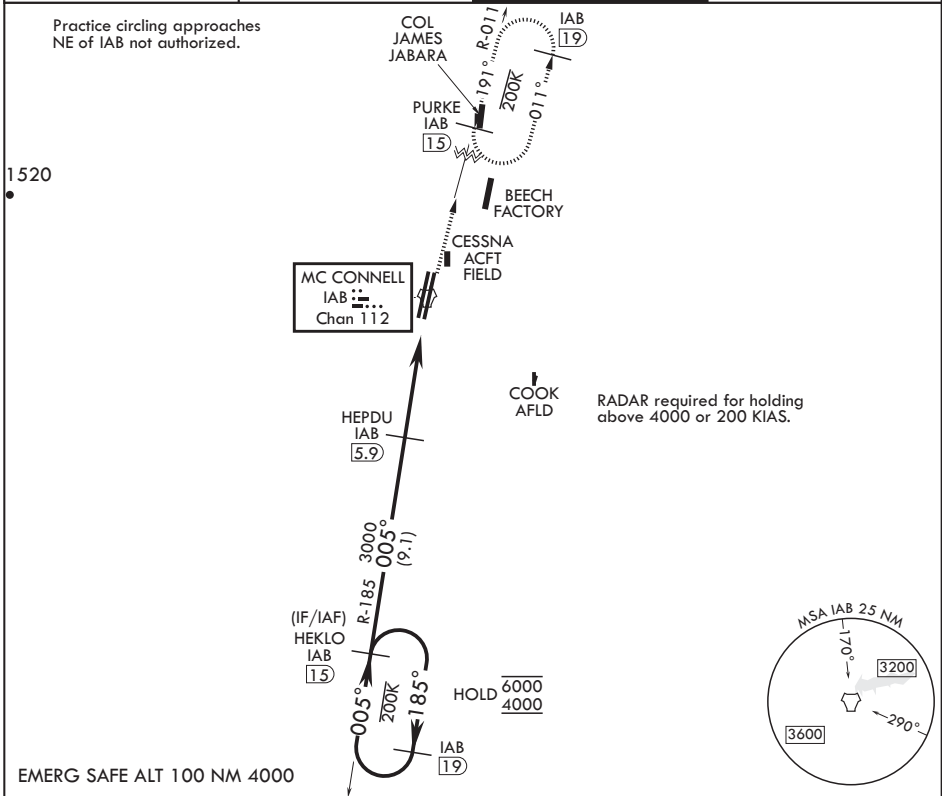
MC CONNELL AFB (KIAB)

▼ \*When ALS inop, increase CAT AB RVR to 55 and vis to 1 mile, CAT CDE vis to 1 1/4 miles.  
\*\*Circling not authorized W of Rwy 1L-19R.



MISSED APPROACH: Climb to 4000 via IAB TACAN R-011 to 15 DME (PURKE) and hold as published. Expect further clearance from ATC.

D-ATIS 124.65 269.9	WICHITA APP CON 134.8 269.1	TOWER 127.25 291.775	GND CON 118.0 275.8
------------------------	--------------------------------	-------------------------	------------------------



CATEGORY	A	B	C	D	E
S-1R*	1780/40		433	(500-3/4)	
☐ CIRCLING**	1900-1 528 (600-1)		1940-1½ 568 (600-1½)	1940-2 568 (600-2)	2400-3 1028 (1100-3)

WICHITA, KANSAS  
Amdt 7 28DEC23

37°37'N - 97°16'W

MC CONNELL AFB (KIAB)

# TACAN RWY 1R

NC-2, 11 JUL 2024 to 08 AUG 2024

NC-2, 11 JUL 2024 to 08 AUG 2024