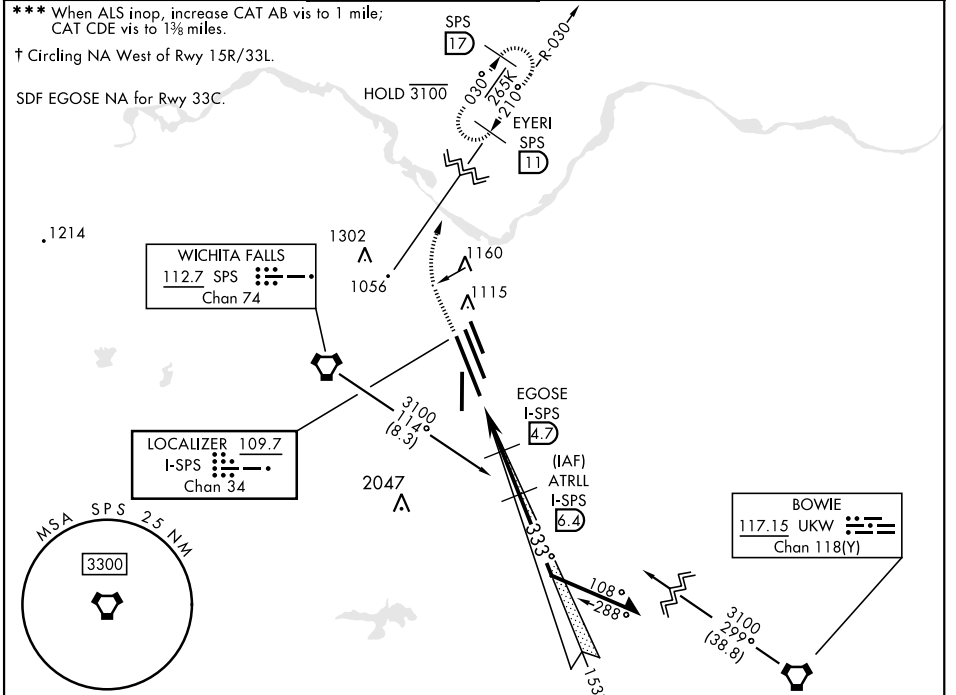


WICHITA FALLS, TEXAS

ILS or LOC/DME Y RWY 33L

LOC/DME I-SPS 109.7 Chan 34	APCH CRS 333°	Rwy ldg 33L 13.100 33C 10.003 TDZE 33L 1000 33C 989 Arprt Elev 1019	[USAF]	SHEPPARD AFB/ WICHITA FALLS MUNI (KSPS)	
* When ALS inop, increase vis to ¾ mile. ** When ALS inop, increase vis to 1 mile.		MALSR A5	ALSF-1 A1	MISSED APPROACH: Climb to 2200, then climbing right turn to 3100 via SPS VORTAC R-030 to EYERI (SPS R-030/11) and hold.	
ATIS ★ 132.05 269.9	APP CON 118.2 269.025	TOWER ★ 119.75 279.525 (CTAF)	GND CON 125.5 289.4	CLNC DEL 121.2 282.225	ASR



ELEV 1019	TDZE 33L 1000 TDZE 33C 989	EMERG SAFE ALT 100 NM 4600				
2200 3100 SPS R-030 EYERI SPS 11 ATRLL I-SPS 6.4 EGOSE I-SPS 4.7 JISOK I-SPS 2.5 I-SPS 3.4 1740 2300 2500 153° 333° 2300 Remain within 15 NM GS 3.00° TCH 48		VGSI and ILS glidepath not coincident (VGSI Angle 3.00/TCH 56).				
CATEGORY	A	B	C	D	E	
S-ILS 33L *	1200-½		200	(200-½)		
S-LOC/ ** DME 33L	1340-½		340	(400-½)		
SIDESTEP 33C ***	1440-½	451 (500-½)	1440-¾	451 (500-¾)		
C CIRCLING†	1440-1 421 (500-1)	1480-1 461 (500-1)	1480-1½ 461 (500-1½)	2020-3 1001(1100-3)	2080-3 1061(1100-3)	

WICHITA FALLS, TEXAS 33°59'N-98°30'W SHEPPARD AFB/WICHITA FALLS MUNI (KSPS)

Amdt 7 14JUL22

ILS or LOC/DME Y RWY 33L

SC-2, 11 JUL 2024 to 08 AUG 2024

SC-2, 11 JUL 2024 to 08 AUG 2024