

# RNAV (GPS) RWY 15C

APCH CRS <b>153°</b>	Rwy Idg <b>10.003</b> TDZE <b>1003</b> Arprt Elev <b>1019</b>
-------------------------	---

[USAF]

SHEPPARD AFB/WICHITA FALLS MUNI (KSPS)

RNP APCH-GPS

ALSF-1

MISSED APPROACH: Climb to 3100 direct DILGR and hold.

▼ \* When ALS inop, increase vis to ¾ mile.  
\*\* When ALS inop, increase CAT AB vis to 1 mile, CAT CDE vis to 1½ miles.

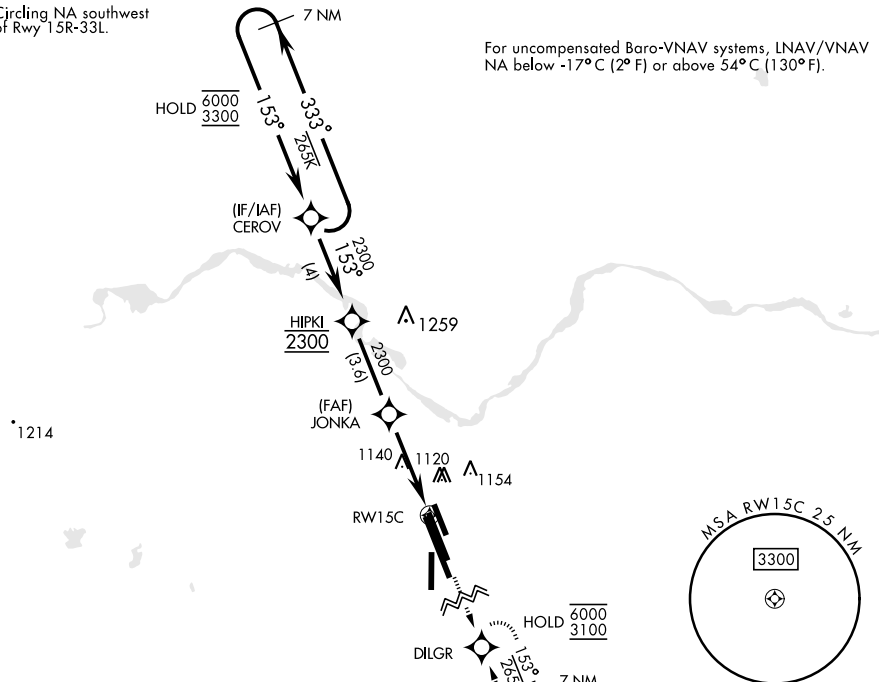
ATIS ★ <b>132.05 269.9</b>	APP CON <b>118.2 269.025</b>	TOWER ★ <b>119.75 0 279.525 (CTAF)</b>	GND CON <b>125.5 289.4</b>	CLNC DEL <b>121.2 282.225</b>	ASR
-------------------------------	---------------------------------	---	-------------------------------	----------------------------------	-----

\*\*\* Circling NA southwest of Rwy 15R-33L.

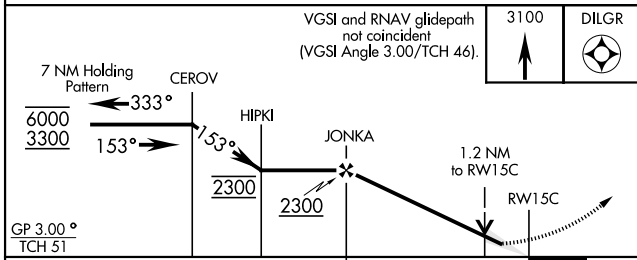
For uncompensated Baro-VNAV systems, LNAV/VNAV NA below -17°C (2° F) or above 54°C (130° F).

SC-2, 11 JUL 2024 to 08 AUG 2024

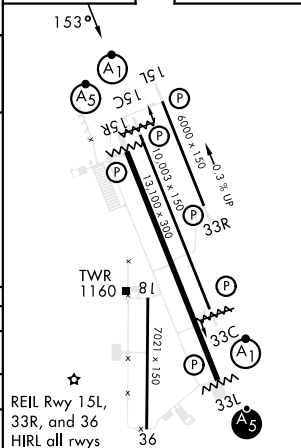
SC-2, 11 JUL 2024 to 08 AUG 2024



EMERG SAFE ALT 100 NM 4600



ELEV	1019	TDZE	1003
------	------	------	------



CATEGORY	A	B	C	D	E
LNAV/VNAV DA*	1266-½ 263 (300-½)	1277-½ 274 (300-½)	1285-½ 282 (300-½)	1296-½	293 (300-½)
LNAV MDA**	1420-½	417 (500-½)	1420-¾	417	(500-¾)
CIRCLING***	1420-1 401 (500-1)	1480-1 461 (500-1)	1480-1½ 461 (500-1½)	2020-3 1001 (1100-3)	2080-3 1061 (1100-3)

# RNAV (GPS) RWY 15C