

RNAV (GPS) RWY 33L

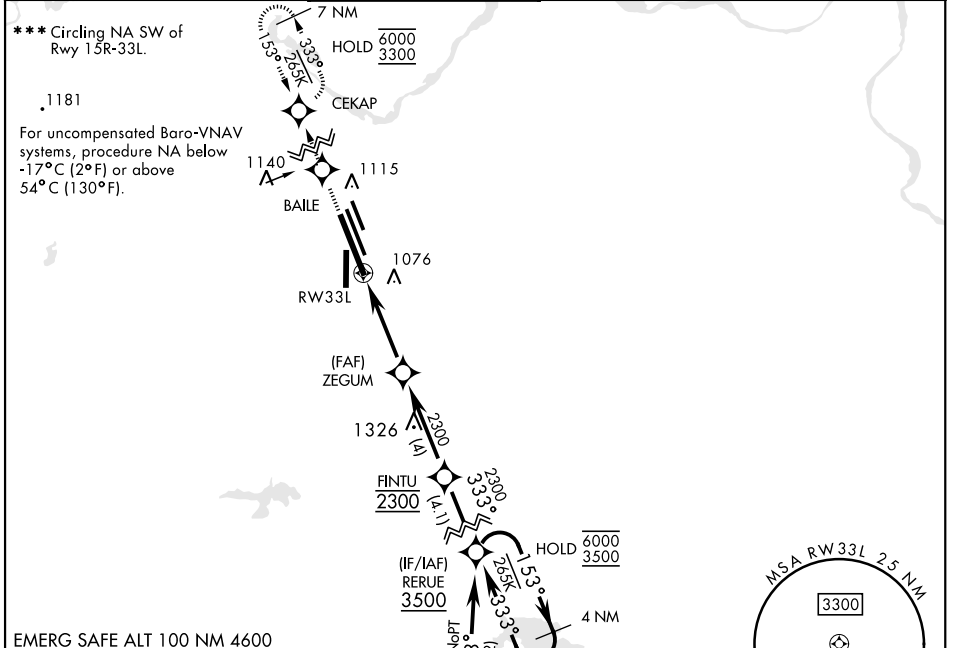
APCH CRS	Rwy ldg
333°	13.100
	TDZE
	1000
	Arprt Elev
	1019

[USAF]

SHEPPARD AFB/WICHITA FALLS MUNI (KSPS)

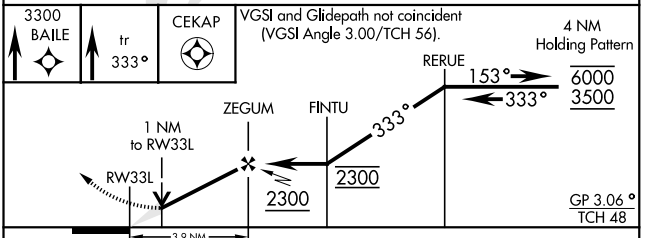
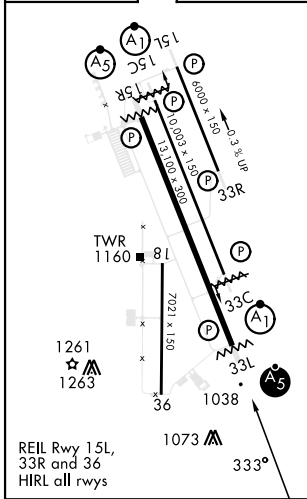
RNP APCH-GPS		MALSR	
<p>▼ * When ALS inop, increase vis to ¾ mile. ** When ALS inop, increase vis to 1 mile.</p>		 MISSED APPROACH: Climb to 3300 direct BAILE, track 333° to CEKAP and hold.	

ATIS*	APP CON	TOWER*	GND CON	CLNC DEL	ASR
132.05 269.9	118.2 269.025	119.75 0 279.525 (CTAF)	125.5 289.4	121.2 282.225	



EMERG SAFE ALT 100 NM 4600

ELEV	1019	TDZE	1000
------	------	------	------



CATEGORY	A	B	C	D	E
LNAV/VNAV DA *	1255-½		255	(300-½)	
LNAV MDA **	1340-½		340	(400-½)	
CIRCLING ***	1440-1	1480-1	1480-1½	2020-3	2080-3
	421 (500-1)	461 (500-1)	461 (500-1½)	1001 (1100-3)	1061 (1100-3)

RNAV (GPS) RWY 33L

SC-2, 11 JUL 2024 to 08 AUG 2024

SC-2, 11 JUL 2024 to 08 AUG 2024