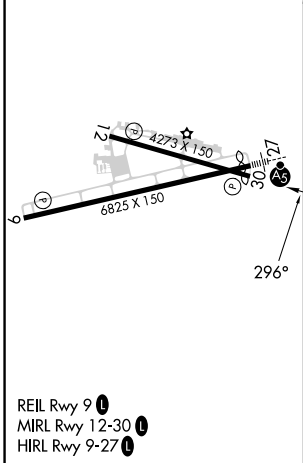
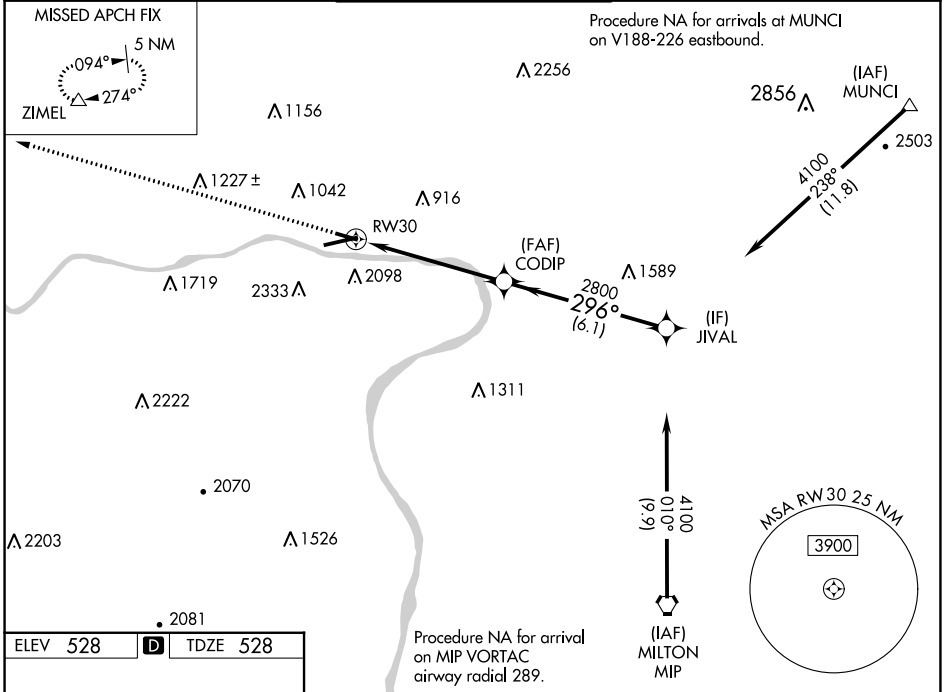


| | | |
|--|------------------------|---|
| WAAS CH 93724 W30A | APP CRS 296° | Rwy Idg 4273 TDZE 528 Apt Elev 528 |
|--|------------------------|---|

RNAV (GPS) RWY 30

WILLIAMSPORT RGNL (IPT)

| | | | | |
|--|--|---|-----------------------------|-----------------------------|
| <p>▽ DME/DME RNP-0.3 NA. Helicopter visibility reduction below 1 SM NA. ▲ Circling NA south of Rwy 9 and southwest of Rwy 30. ❄ -14°C Night landing: Rwy 12, 30 NA.</p> | <p>MISSED APPROACH: Climb to 4500 direct ZIMEL and hold, continue climb-in-hold to 4500.</p> | | | |
| <p>ASOS 125.225</p> | <p>NEW YORK CENTER 124.9</p> | <p>WILLIAMSPORT TOWER ★ 119.1 (CTAF) 257.8</p> | <p>GND CON 121.9</p> | <p>UNICOM 122.95</p> |



NE-4, 11 JUL 2024 to 08 AUG 2024

NE-4, 11 JUL 2024 to 08 AUG 2024