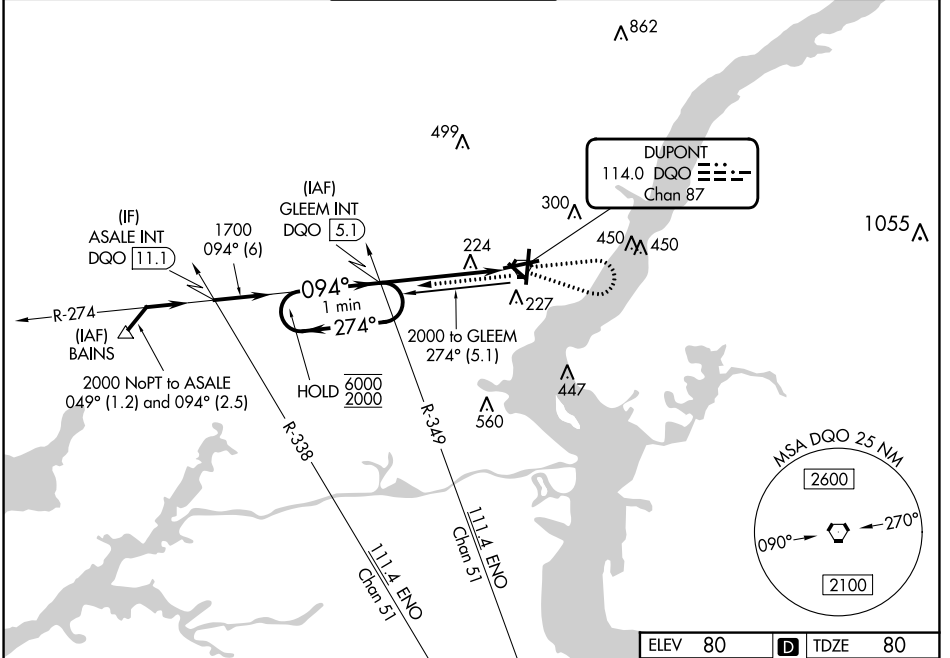


VORTAC DQO <b>114.0</b> Chan <b>87</b>	APP CRS <b>094°</b>	Rwy Idg <b>7000</b> TDZE <b>80</b> Apt Elev <b>80</b>
--	------------------------	---

# VOR RWY 9

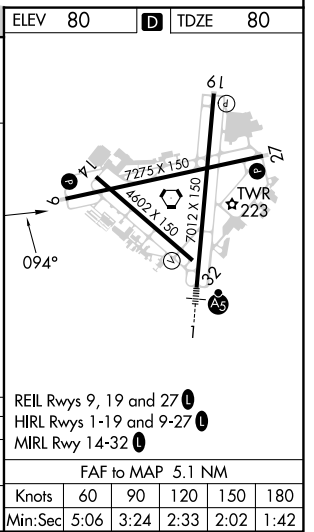
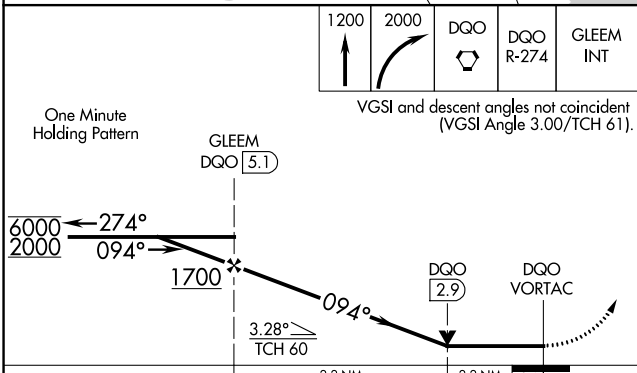
NEW CASTLE (ILG)

<p><b>V</b> VDP NA when using Philadelphia Intl altimeter setting. When local altimeter setting not received, use Philadelphia Intl altimeter setting and increase all MDAs 60 feet and Circling visibility Cats A and D 1/4 SM.</p>		<p>MISSED APPROACH: Climb to 1200 then climbing right turn to 2000 direct DQO VORTAC then on DQO VORTAC R-274 to GLEEM INT/DQO 5.1 DME and hold.</p>			
ATIS <b>123.95</b>	PHILADELPHIA APP CON <b>118.35 323.1</b>	WILMINGTON TOWER* <b>126.0</b> (CTAF) <b>352.05</b>	GND CON <b>121.7 275.8</b>	CLNC DEL <b>119.95</b>	UNICOM <b>122.95</b>



NE-3, 11 JUL 2024 to 08 AUG 2024

NE-3, 11 JUL 2024 to 08 AUG 2024



	A	B	C	D
S-9	860-1 780 (800-1)	860-1¼ 780 (800-1¼)	860-2½	780 (800-2½)
CIRCLING	860-1 780 (800-1)	860-1¼ 780 (800-1¼)	860-2½	780 (800-2½)

REIL Rwy 9, 19 and 27  
HIRL Rwy 1-19 and 9-27  
MIRL Rwy 14-32

FAF to MAP 5.1 NM

Knots	60	90	120	150	180
Min:Sec	5:06	3:24	2:33	2:02	1:42