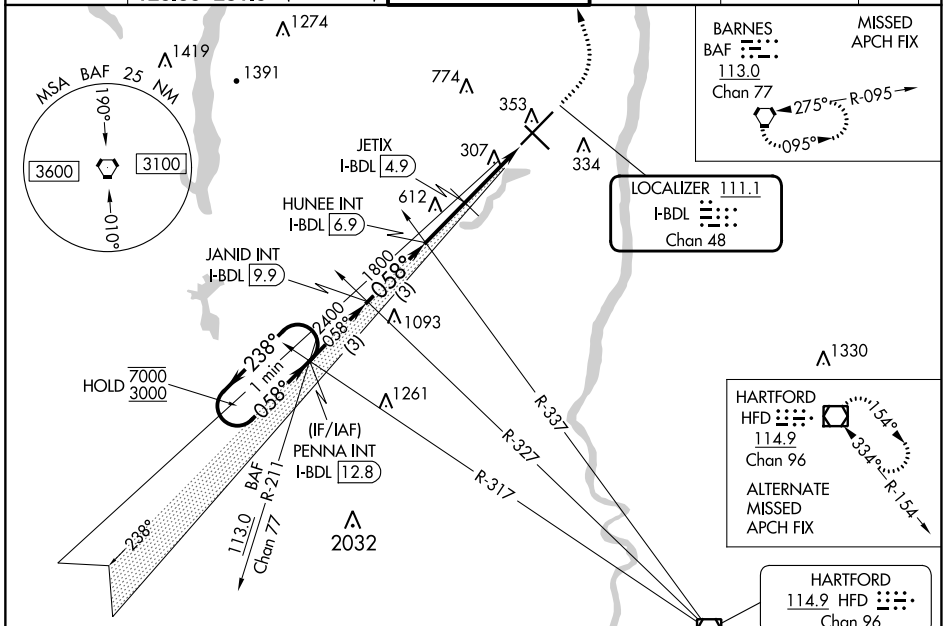


LOC/DME I-BDL 111.1 Chan 48	APP CRS 058°	Rwy Idg TDZE Apt Elev	9509 173 173
---	------------------------	-----------------------------	---

ILS or LOC RWY 6

BRADLEY INTL (BDL)

RADAR required for procedure entry.		ALSF-2	MISSED APPROACH: Climb to 4000 then left turn direct BAF VORTAC and hold.		
D-ATIS 118.15	BRADLEY APP CON 123.95 290.55 (061°-240°) 125.35 281.5 (241°-060°)	BRADLEY TOWER 120.3 351.8	GND CON 121.9 348.6	CLNC DEL 121.75 322.3	CPDLC



ELEV 173	D	TDZE 173
----------	----------	----------

TWR 345
9510 X 200
6847 X 150
058°

TDZ/CL Rwy 6 and 24
HIRL Rwy 6-24 and 15-33
REIL Rwy 6 and 15

FAF to MAP 4.9 NM

Knots	60	90	120	150	180
Min:Sec	4:54	3:16	2:27	1:58	1:38

VGSI and ILS glidepath not coincident (VGSI Angle 3.00/TCH 71).

One Minute Holding Pattern

PENNA INT I-BDL [12.8]
JANID INT I-BDL [9.9]
HUNEE INT I-BDL [6.9]
JETIX I-BDL [4.9]

GS 3.00° TCH 54

CATEGORY	A	B	C	D
S-ILS 6	373/18 200 (200-½)			
S-LOC 6	1160/40 987 (1000-¾)	1160/55 987 (1000-1)	1160-2½	987 (1000-2½)
JETIX FIX MINIMUMS (DME REQUIRED)				
S-LOC 6	560/24	387 (400-½)	560/35	387 (400-⅝)

NE-1, 11 JUL 2024 to 08 AUG 2024

NE-1, 11 JUL 2024 to 08 AUG 2024