

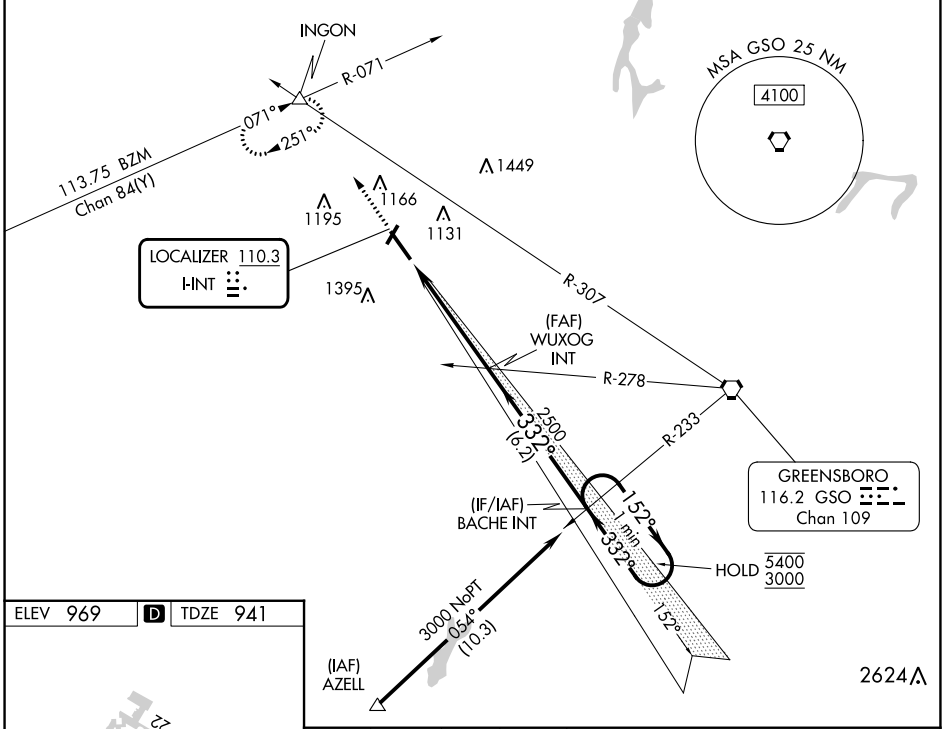
LOC I-INT 110.3	APP CRS 332°	Rwy Idg 6655
		TDZE 941
		Apt Elev 969

ILS or LOC RWY 33

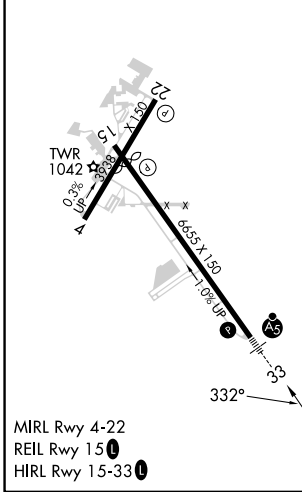
SMITH REYNOLDS (INT)

RNP APCH-GPS, From AZELL.	MALS R AS	MISSED APPROACH: Climb to 1400 then climbing right turn to 3500 on heading 341° and GSO VORTAC R-307 to INCON INT and hold, continue climb-in-hold to 3500.
RADAR required for non-GPS equipped aircraft.		
<p>⚠ *RVR 1800 authorized with use of FD or AP or HUD to DA.</p>		

ATIS 121.3	GREENSBORO APP CON 124.35 269.225	WINSTON-SALEM TOWER ★ 123.75 (CTAF) 0 257.8	GND CON 128.25	UNICOM 122.95
----------------------	---	---	--------------------------	-------------------------



ELEV 969	D	TDZE 941
----------	----------	----------



WINSTON SALEM, NORTH CAROLINA
Amdt 30 05OCT23

1400	3500	INGON	One Minute Holding Pattern	
↑	hdg 341°	GSO R-307	WUXOG INT	BACHE INT
RW33		2500	2500	152° → 5400 ← 332° 3000
4.8 NM		6.2 NM		GS 3.00° TCH 57
CATEGORY	A	B	C	D
S-ILS 33*	1141/24		200 (200-1/2)	
S-LOC 33	1400/24	459 (500-1/2)	1400/45	459 (500-7/8)
CIRCLING	1480-1 511 (600-1)	1580-1 611 (700-1)	1700-2 731 (800-2)	1760-2 1/2 791 (800-2 1/2)

36°08'N-80°13'W

ILS or LOC RWY 33

SMITH REYNOLDS (INT)

SE-2, 11 JUL 2024 to 08 AUG 2024

SE-2, 11 JUL 2024 to 08 AUG 2024