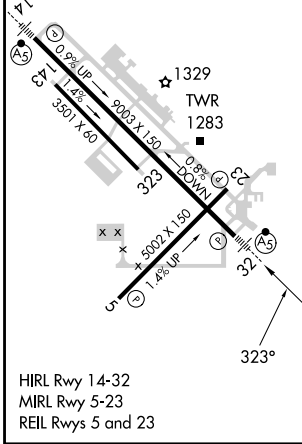
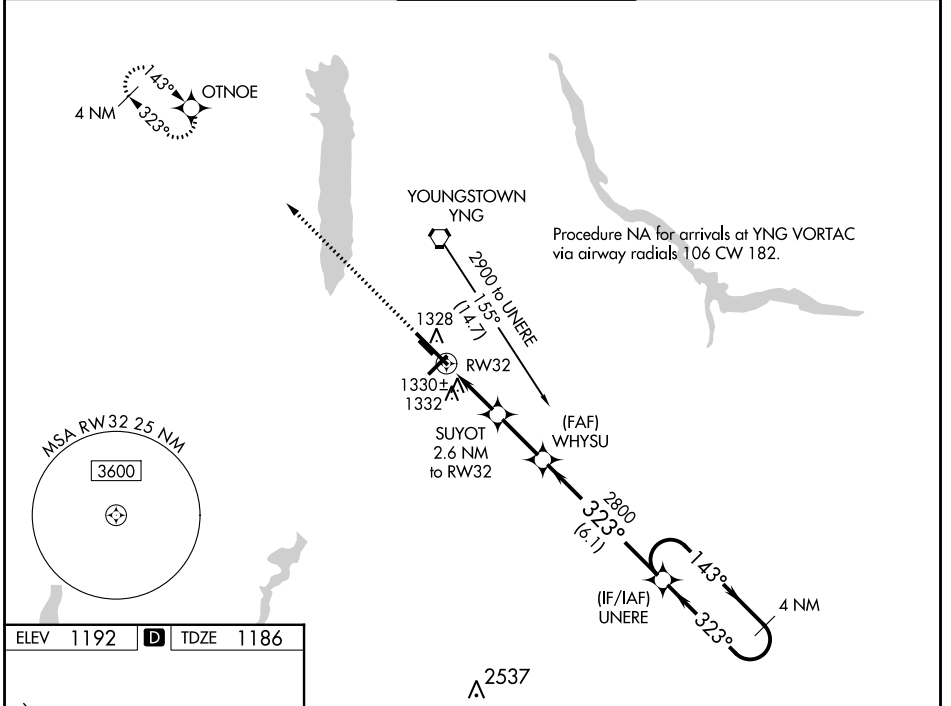


WAAS CH <b>97406</b> <b>W32A</b>	APP CRS <b>323°</b>	Rwy Idg TDZE Apt Elev	<b>9003</b> <b>1186</b> <b>1192</b>
--	------------------------	-----------------------------	---

# RNAV (GPS) RWY 32

YOUNGSTOWN/WARREN RGNL (YNG)

RNP APCH. ASR For uncompensated Baro-VNAV systems, LNAV/VNAV NA below -17°C or above 46°C. For inop ALS, increase LPV all Cats visibility to RVR 5000 and LNAV Cat D visibility to RVR 6000. Circling Rwy 5 NA at night.		MAISR 	MISSED APPROACH: Climb to 2900 direct OTNOE and hold.	
ATIS <b>123.75</b>	YOUNGSTOWN APP CON * <b>133.95 322.3</b>	YOUNGSTOWN TOWER <b>119.5 263.0</b>	GND CON <b>121.9 275.8</b>	CLNC DEL <b>118.25</b>



ELEV 1192	<b>D</b> TDZE 1186
<p>2900 OTNOE</p> <p>*LNAV only</p> <p>UNERE 4 NM Holding Pattern</p> <p>SUYOT 2.6 NM to RW32</p> <p>WHYSU 2800</p> <p>RW32</p> <p>1.1 NM to RW32</p> <p>*2040</p> <p>2800</p> <p>GP 3.00° TCH 35</p> <p>1.1 1.5 2.3 NM 6.1 NM</p>	
CATEGORY	A B C D
LPV DA	1458/24 272 (300-½)
LNAV/VNAV DA	1639/60 453 (500-1¼)
LNAV MDA	1580/24 394 (400-½) 1580/50 394 (400-1)
<b>C</b> CIRCLING	1640-1 448 (500-1) 1660-1 468 (500-1) 1740-1½ 548 (600-1½) 1760-2 568 (600-2)

EC-2, 11 JUL 2024 to 08 AUG 2024

EC-2, 11 JUL 2024 to 08 AUG 2024