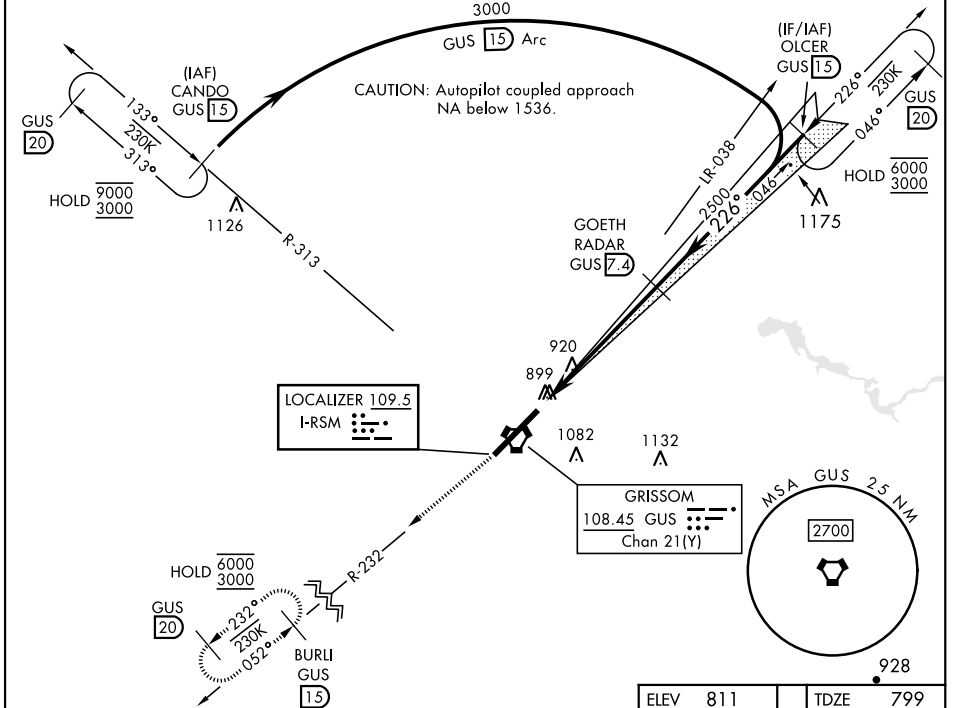


# ILS or LOC RWY 23

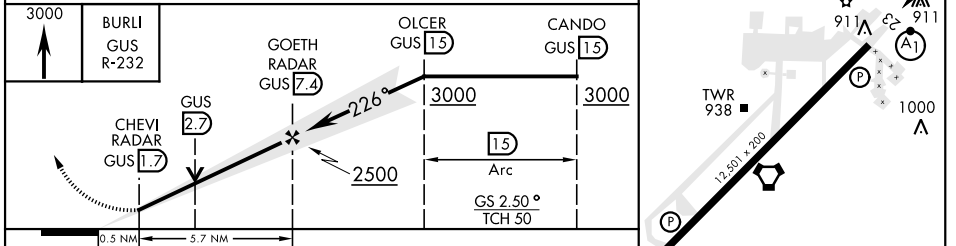
LOC I-RSM <b>109.5</b>	APCH CRS <b>226°</b>	Rwy Ldg TDZE <b>12,501</b> 799 Arprt Elev <b>811</b>	[USAF]	GRISSOM ARB (KGUS)
---------------------------	-------------------------	--	--------	--------------------

RADAR, TACAN required.	ALSF-1 	MISSED APPROACH: Climb to 3000 on the GUS VORTAC R-232 to BURLI and hold. Missed approach requires use of RNAV or ATC RADAR monitoring.
------------------------	------------	--

ATIS <b>108.45 270.8</b>	APP CON <b>121.05 351.8</b> (E) <b>123.85 291.675</b> (W)	TOWER★ <b>133.7 290.45</b>	GND CON <b>128.425 275.8</b>	CLNC DEL <b>128.425 275.8</b>
-----------------------------	---	-------------------------------	---------------------------------	----------------------------------



ELEV 811	TDZE 799
----------	----------



CATEGORY	A	B	C	D	E
S-ILS 23*	999/24		200	(200-½)	
S-LOC 23**	1260/24	461 (500-½)	1260/50	461	(500-1)
CIRCLING	1340-1	529 (600-1)	1400-1½	1400-2	1440-2¼
			589 (600-1½)	589 (600-2)	629 (700-2¼)
FAF to MAP 5.7 NM					
Knots	60	90	120	150	180
Min:Sec	5:42	3:48	2:51	2:17	1:54

# ILS or LOC RWY 23

EC-2, 11 JUL 2024 to 08 AUG 2024

EC-2, 11 JUL 2024 to 08 AUG 2024