

PERU, INDIANA

# ILS or LOC RWY 5

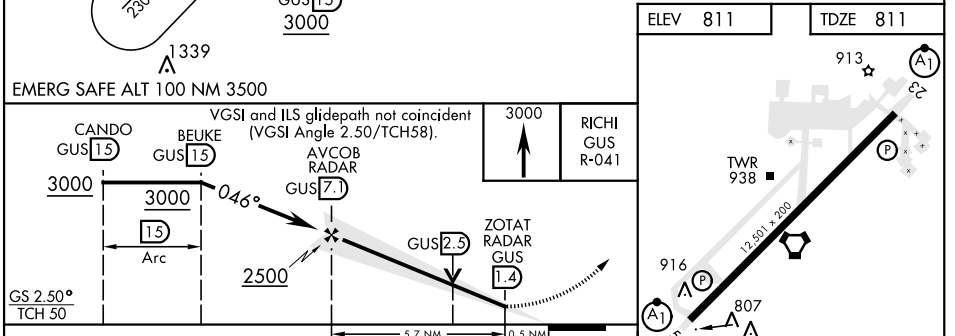
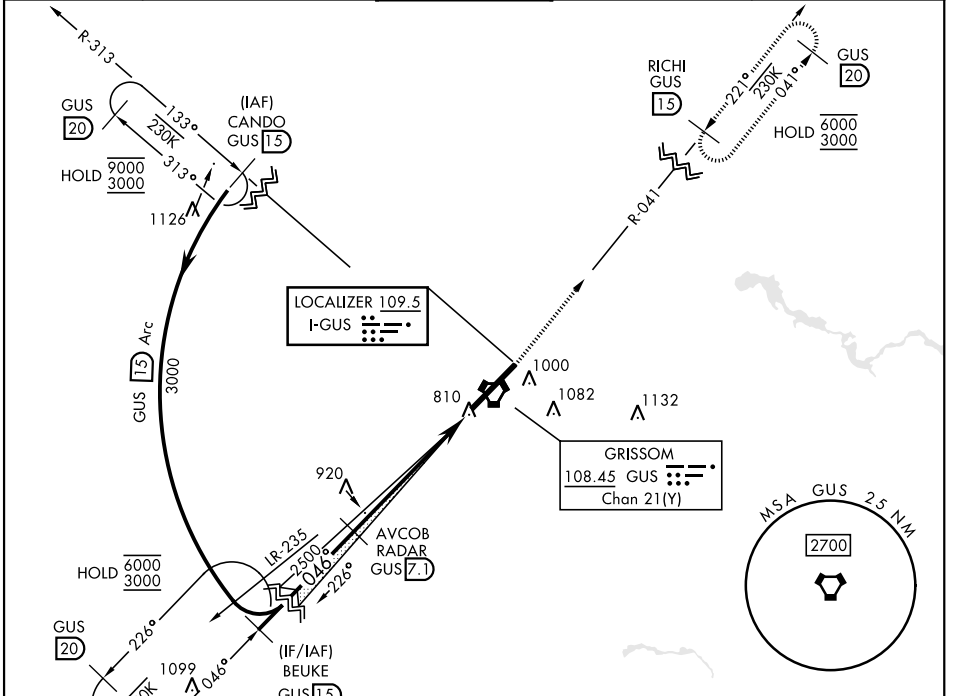
LOC I-GUS <b>109.5</b>	APCH CRS <b>046°</b>	Rwy Ildg 12,501
		TDZE 811
		Arprt Elev 811

[USAF]

GRISSOM ARB (KGUS)

RADAR, TACAN required		ALSIF-1	MISSED APPROACH: Climb to 3000 on the GUS VORTAC R-041 to RICHI and hold.
* When ALS inop, increase RVR to 40 and vis to 3/4 mile.			MISSED approach requires use of RNAV or ATC RADAR monitoring.
** When ALS inop, increase CAT AB RVR to 55 and vis to 1 mile; CAT CDE vis to 1 1/2 miles.			

ATIS <b>108.45 270.8</b>	APP CON <b>121.05 351.8</b> (E) <b>123.85 291.675</b> (W)	TOWER★ <b>133.7 290.45</b>	GND CON <b>128.425 275.8</b>	CLNC DEL <b>128.425 275.8</b>
-----------------------------	-----------------------------------------------------------------	-------------------------------	---------------------------------	----------------------------------



ELEV 811	TDZE 811										
EMERG SAFE ALT 100 NM 3500						HIRL Rwy 5-23					
VGSI and ILS glidepath not coincident (VGSI Angle 2.50/TCH58).						FAF to MAP 5.7 NM					
CATEGORY	A	B	C	D	E						
S-ILS 5*	1011/24		200	(200-1/2)							
S-LOC 5**	1280/24	469 (500-1/2)	1280/50 469 (500-1)								
CIRCLING	1340-1	529 (600-1)	1400-1 1/2	1400-2	1440-2 1/4						
			589 (600-1/2)	589 (600-2)	629 (700-2 1/4)						
						Knots	60	90	120	150	180
						Min:Sec	5:42	3:48	2:51	2:17	1:54

PERU, INDIANA

40°39'N-86°09'W

GRISSOM ARB (KGUS)

Amtd 9 11AUG22

# ILS or LOC RWY 5

EC-2, 11 JUL 2024 to 08 AUG 2024

EC-2, 11 JUL 2024 to 08 AUG 2024