

PERU, INDIANA

# RNAV (GPS) RWY 23

APCH CRS	Rwy Idg	12,501
226°	TDZE	799
	Arprt Elev	811

- (USAF)

GRISSOM ARB (KGUS)

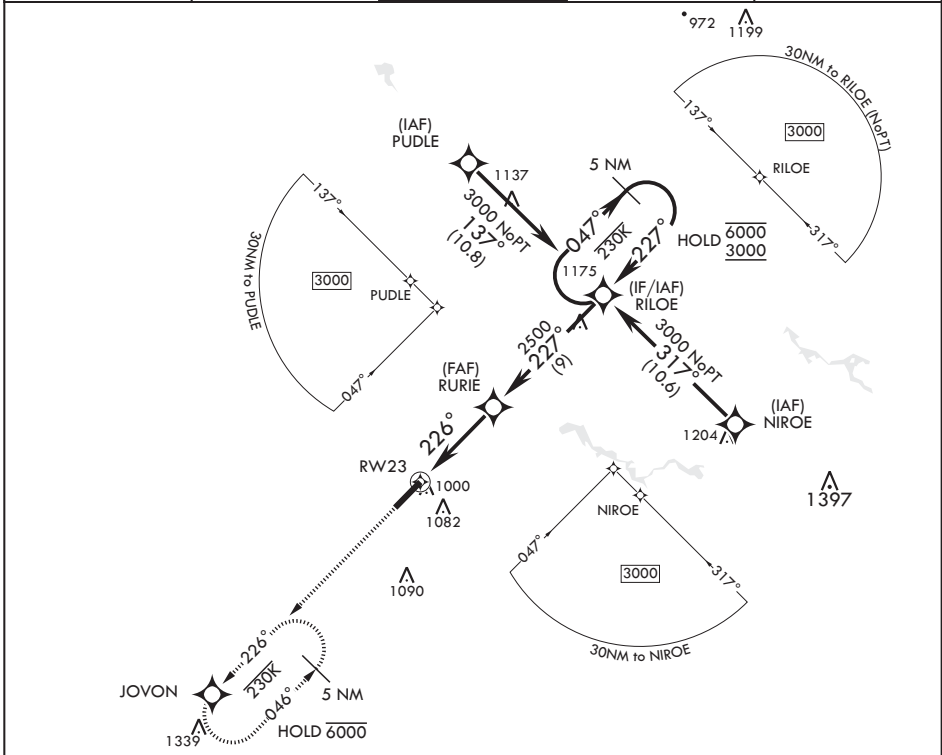
RNP APCH. DME/DME RNP-0.3 NA



MISSED APPROACH: Climb to 3000 direct JOVON and hold.

\* When ALS inop, increase CAT AB RVR to 55 and vis to 1 mile, CAT CDE vis to 1 3/8 miles.

ATIS 108.45 270.8	APP CON/DEP CON 121.05 351.8 E 123.85 291.675 W	TOWER ★ 133.7 290.45	GND CON 128.425 275.8	CLNC DEL 128.425 275.8
----------------------	---	-------------------------	--------------------------	---------------------------



EMERG SAFE ALT 100 NM 3500

3000	JOVON	5 NM Holding Pattern			ELEV 811	TDZE 799
CATEGORY	A	B	C	D	E	
LNAV MDA*	1260/24	461 (500-½)	1260/50	461	(500-1)	
CIRCLING	1340-1	529 (600-1)	1400-1½ 589 (600-1½)	1400-2 589 (600-2)	1440-2¼ 629 (700-2¼)	

PERU, INDIANA

40°39'N - 86°09'W

GRISSOM ARB (KGUS)

Amdt 6 14JUL22

# RNAV (GPS) RWY 23

EC-2, 11 JUL 2024 to 08 AUG 2024

EC-2, 11 JUL 2024 to 08 AUG 2024