

WAAS CH <b>40303</b> <b>W21A</b>	APP CRS <b>211°</b>	Rwy Idg TDZE Apt Elev	<b>7110</b> <b>404</b> <b>410</b>
--	------------------------	-----------------------------	---

# RNAV (GPS) Y RWY 21R

TRI-CITIES (PSC)

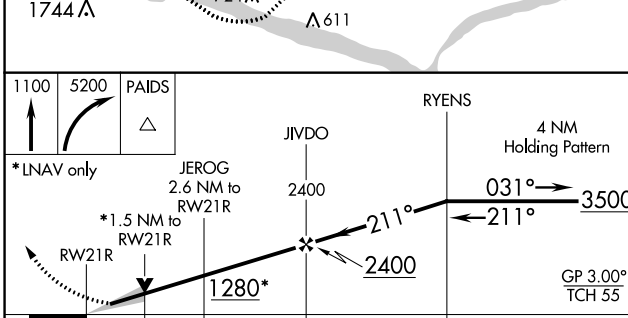
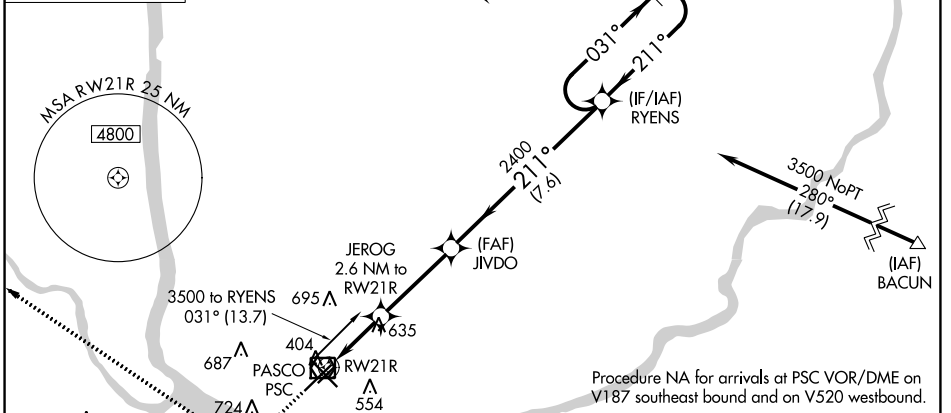
**⚠** Baro-VNAV NA when using Hermiston altimeter setting. For uncompensated Baro-VNAV systems, LNAV/VNAV NA below -1.4°C (7°F) or above 54°C (130°F).  
**⚠** DME/DME RNP-0.3 NA. VDP NA with Hermiston altimeter setting. When local altimeter setting not received, use Hermiston altimeter setting and increase all DA 95 feet and all MDA 100 feet; increase LNAV/VNAV all Cats visibility 3/8 mile; LNAV Cat C and D visibility 1/2 mile and Circling Cat C and D visibility 1/4 mile.  
 # RVR 1800 authorized with use of FD or AP or HUD to DA, NA when using Hermiston altimeter setting.

**MALSR**

**MISSED APPROACH:**  
 Climb to 1100 then climbing right turn to 5200 direct PAIDS and hold, continue climb-in-hold to 5200.

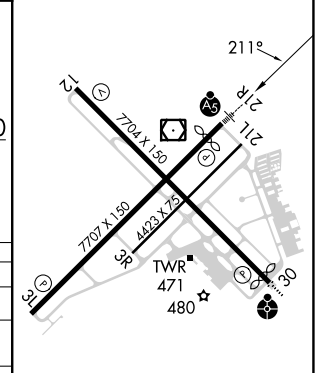
ATIS <b>125.65</b>	SPOKANE APP CON* <b>128.75 377.2</b>	TRI-CITIES TOWER* <b>135.3 (CTAF) 0 323.3</b>	GND CON <b>121.8</b>	CLNC DEL <b>120.0</b>	UNICOM <b>122.95</b>
-----------------------	---	--	-------------------------	--------------------------	-------------------------

**MISSED APCH FIX**



ELEV 410	<b>D</b> TDZE 404
----------	-------------------

1100	5200	PAIDS
*LNAV only		
RWY 21R		
1.5 NM	1.1 NM	3.5 NM
A		B
LPV	DA#	604/24
LNAV/VNAV	DA	844/51
LNAV MDA	940/24	536 (600-1/2)
<b>C</b> CIRCLING	940-1	530 (600-1)
		1040-1 3/4
		630 (700-1 3/4)
		1100-2 1/4
		690 (700-2 1/4)



REIL Rwy 3L and 12  
 MIRL Rwy 12-30  
 HIRL Rwy 3L-21R

NW-1, 11 JUL 2024 to 08 AUG 2024

NW-1, 11 JUL 2024 to 08 AUG 2024