

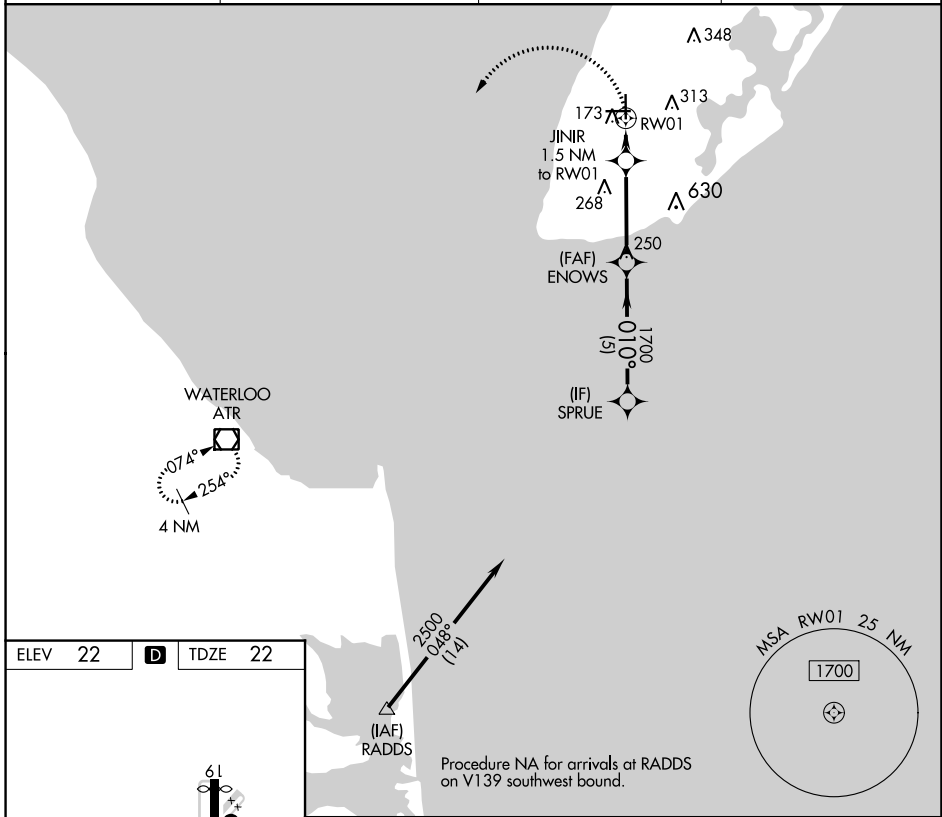
APP CRS	Rwy Idg 5036
010°	TDZE 22
	Apt Elev 22

RNAV (GPS) RWY 1

CAPE MAY COUNTY (WWD)

RNP APCH.	<p>▼ Circling NA for Cats C and D NE of Rwy 19 and 28. Rwy 1 helicopter visibility reduction below 1 SM NA. Straight-in Rwy 1 NA at night, Circling Rwy 1 NA at night.</p>	<p>▲ MISSED APPROACH: Climbing left turn to 3000 direct ATR VOR/DME and hold.</p>
-----------	---	--

AWOS-3PT 118.275	ATLANTIC CITY APP CON 124.6 327.125	CLNC DEL 121.7	UNICOM 122.7 (CTAF) ①
----------------------------	---	--------------------------	---------------------------------



NE-2, 11 JUL 2024 to 08 AUG 2024

NE-2, 11 JUL 2024 to 08 AUG 2024