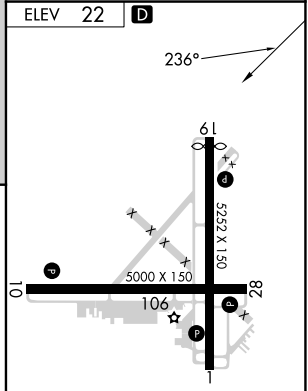
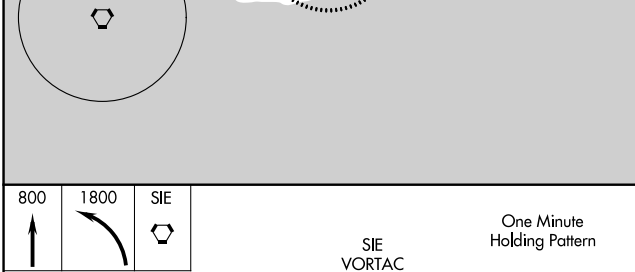
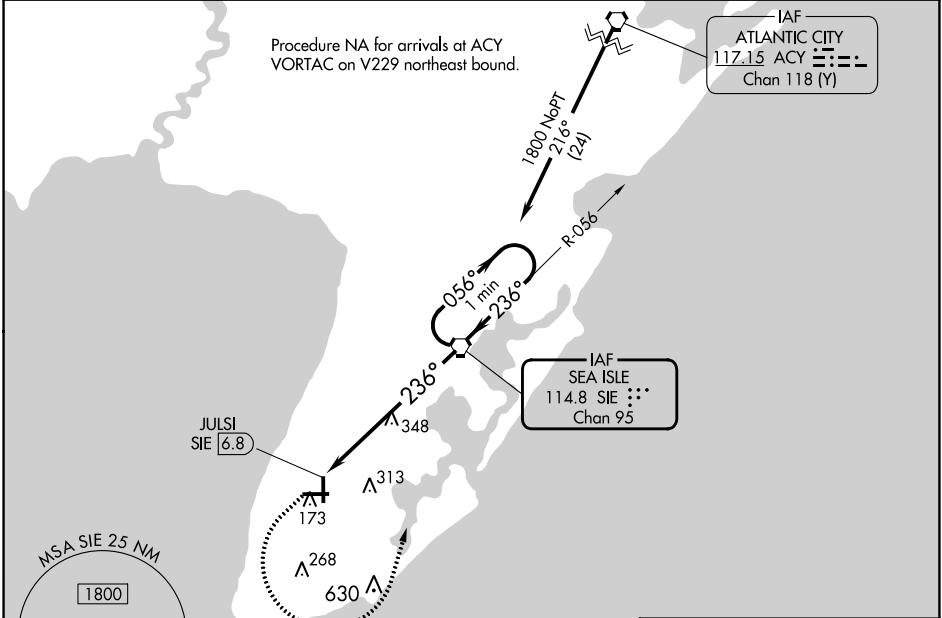


VORTAC SIE 114.8 Chan 95	APP CRS 236°	Rwy Idg TDZE Apt Elev	N/A N/A 22
--	------------------------	-----------------------------	---------------------------------------

VOR-A
CAPE MAY COUNTY (WWD)

<p>▼ ▲</p> <p>Circling NA for Cats C and D NE of Rwy 19 and 28. Circling Rwy 1 NA at night.</p>	<p>MISSED APPROACH: Climb to 800 then climbing left turn to 1800 direct SIE VORTAC and hold.</p>
---	--

AWOS-3PT 118.275	ATLANTIC CITY APP CON 124.6 327.125	CLNC DEL 121.7	UNICOM 122.7 (CTAF) 0
----------------------------	---	--------------------------	---------------------------------



MIRL Rwy 10-28 0

HIRL Rwy 1-19 0

CATEGORY		FAF to MAP 6.8 NM				
CIRCLING	A	B	C	D		
	640-7/8 618 (700-7/8)	640-1 618 (700-1)	640-1 3/4 618 (700-1 3/4)	980-3 958 (1000-3)	Knots	60 90 120 150 180
					Min:Sec	6:48 4:32 3:24 2:43 2:16

NE-2, 11 JUL 2024 to 08 AUG 2024

NE-2, 11 JUL 2024 to 08 AUG 2024