

WAAS CH <b>48906</b> <b>W04A</b>	APP CRS <b>041°</b>	Rwy Idg TDZE <b>160</b> Apt Elev <b>170</b>	<b>6498</b>
--	------------------------	---	-------------

# RNAV (GPS) RWY 4

TUSCALOOSA NTL (TCL)

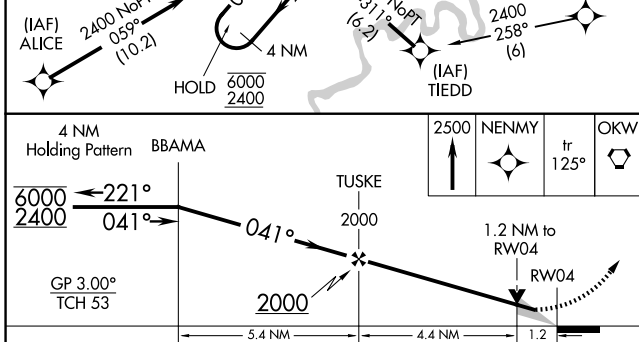
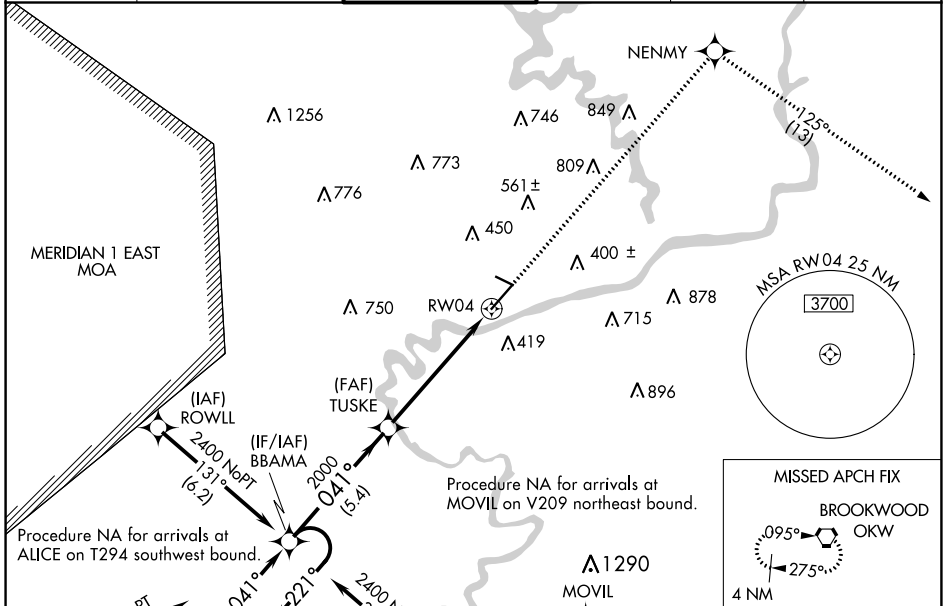
RNP APCH - GPS.

**⚠** Circling Rwy 12, 30 NA at night. For uncompensated Baro-VNAV systems, LNAV/VNAV NA below -7°C or above 54°C. For inop ALS, increase LNAV/VNAV all Cats visibility to 1 1/8 SM.

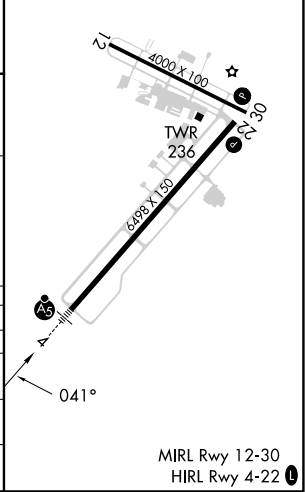
MALSR

**MISSED APPROACH:** Climb to 2500 direct NENMY and on track 125° to OKW VORTAC and hold.

ASOS <b>132.825</b>	BIRMINGHAM APP CON <b>120.15 269.25</b>	TUSCALOOSA TOWER ★ <b>126.3</b> (CTAF) <b>0 256.7</b>	GND CON <b>121.8 257.95</b>	CLNC DEL <b>120.775</b>	UNICOM <b>122.95</b>
------------------------	--	--	--------------------------------	----------------------------	-------------------------



ELEV 170	TDZE 160
----------	----------



CATEGORY	A	B	C	D
LPV DA		360-1/2	200 (200-1/2)	
LNAV/VNAV DA		575-3/4	415 (500-3/4)	
LNAV MDA	600-1/2	440 (500-1/2)	600-3/4	440 (500-3/4)
<b>CIRCLING</b>	720-1 550 (600-1)	800-1 630 (700-1)	960-2 1/4 790 (800-2 1/4)	960-2 1/2 790 (800-2 1/2)

SE-4, 11 JUL 2024 to 08 AUG 2024

SE-4, 11 JUL 2024 to 08 AUG 2024