

VORTAC GCK <b>113.3</b> Chan <b>80</b>	APP CRS <b>173°</b>	Rwy Idg <b>7299</b> TDZE <b>2889</b> Apt Elev <b>2891</b>
--	------------------------	---

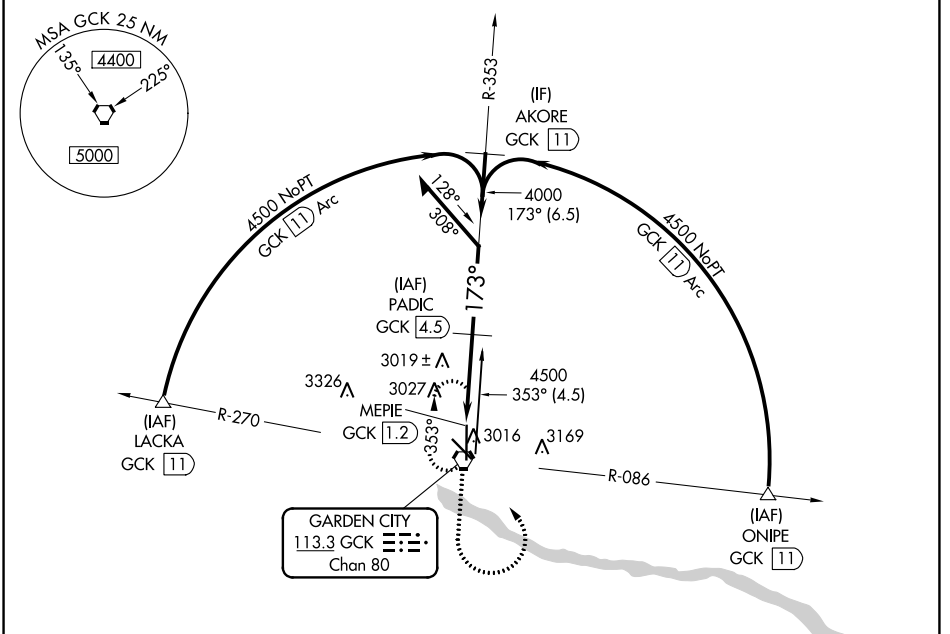
# VOR/DME RWY 17

GARDEN CITY RGNL (GCK)

**⚠** When local altimeter setting not received, use Dodge City Rgnl altimeter setting and increase all MDA 140 feet and Circling Cat C visibility ½ SM and Circling Cat D visibility ¼ SM.  
**⚠** VDP NA when using Dodge City altimeter setting.

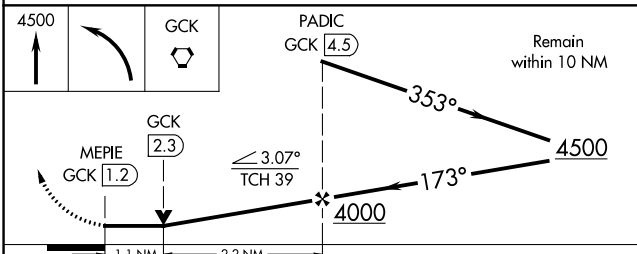
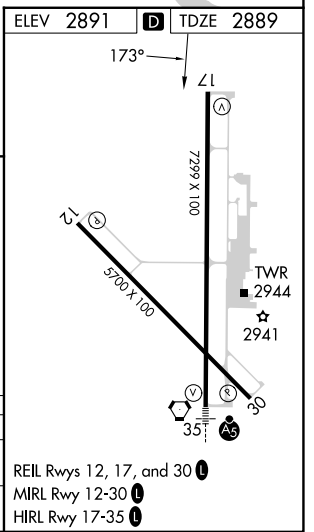
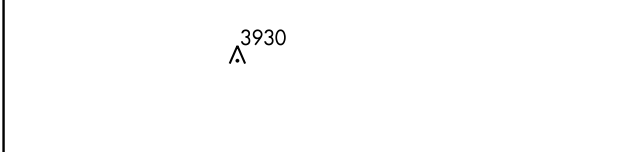
**MISSED APPROACH:**  
 Climb to 4500, then left turn direct GCK VORTAC and hold.

ASOS <b>121.325</b>	KANSAS CITY CENTER <b>125.2 285.425</b>	GARDEN CITY TOWER * <b>118.15 (CTAF) 254.4</b>	GND CON <b>119.0 254.4</b>	UNICOM <b>122.95</b>
------------------------	--	---	-------------------------------	-------------------------



NC-2, 11 JUL 2024 to 08 AUG 2024

NC-2, 11 JUL 2024 to 08 AUG 2024



CATEGORY	A	B	C	D
S-17		3280-1 391 (400-1)		3280-1½ 391 (400-1½)
<b>C</b> CIRCLING	3320-1 429 (500-1)	3360-1 469 (500-1)	3480-1½ 589 (600-1½)	3480-2 589 (600-2)

REIL Rwy 12, 17, and 30 **Ⓛ**  
 MIRL Rwy 12-30 **Ⓛ**  
 HIRL Rwy 17-35 **Ⓛ**