

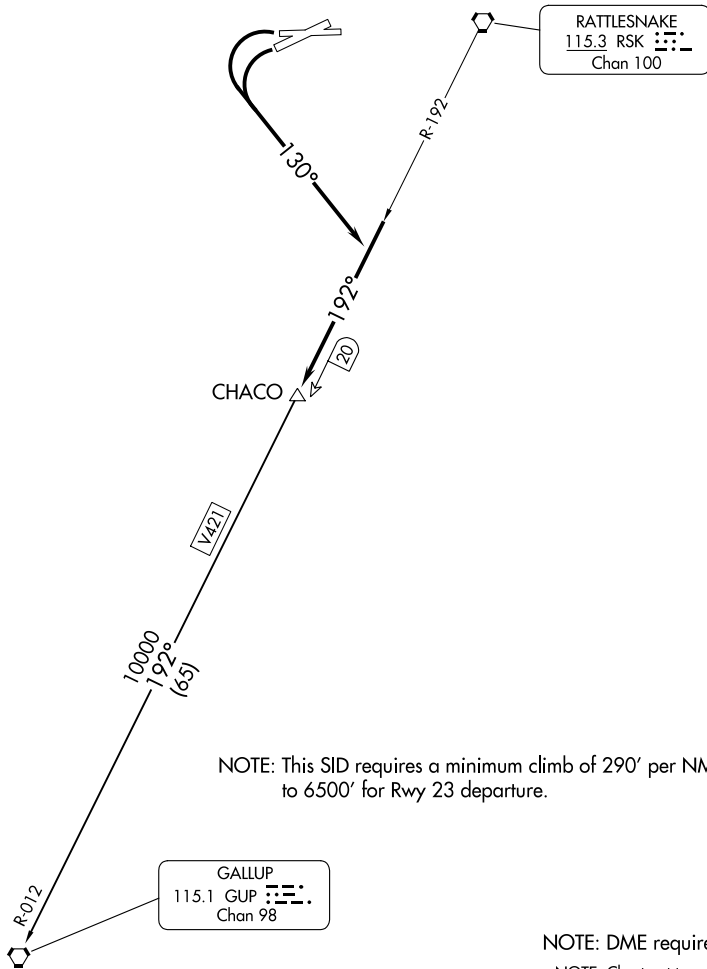
(CHACO1.CHACO) 23334

# CHACO ONE DEPARTURE

AL-493 (FAA)

FOUR CORNERS RGNL (F'MIN)  
FARMINGTON, NEW MEXICO

ATIS  
127.15  
GND CON  
121.7  
FARMINGTON TOWER  
118.9 (CTAF) 257.8  
DENVER CENTER  
118.575 348.7  
UNICOM  
122.95



NOTE: This SID requires a minimum climb of 290' per NM to 6500' for Rwy 23 departure.

NOTE: DME required.

NOTE: Chart not to scale.

SW-1, 11 JUL 2024 to 08 AUG 2024

SW-1, 11 JUL 2024 to 08 AUG 2024



## DEPARTURE ROUTE DESCRIPTION

Aircraft departing Runways 23 or 25 turn left heading 130° to intercept RSK R-192 to CHACO. Thence via (assigned route).

GALLUP TRANSITION (CHACO1.GUP): From over CHACO via RSK R-192 and GUP R-012 to GUP VORTAC.

# CHACO ONE DEPARTURE

(CHACO1.CHACO) 05DEC96

FARMINGTON, NEW MEXICO  
FOUR CORNERS RGNL (F'MIN)