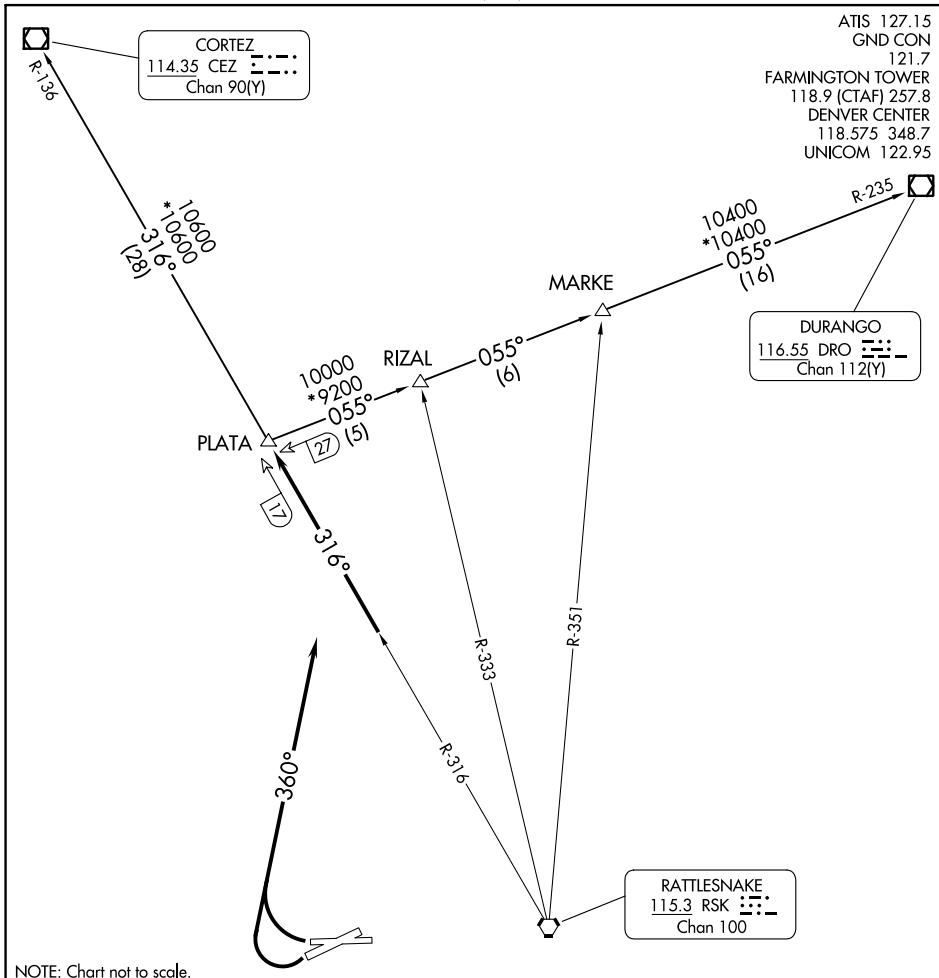


(PLATA1.PLATA) 23334

PLATA ONE DEPARTURE

AL-493 (FAA)

FOUR CORNERS RGNL (F^{MN})
FARMINGTON, NEW MEXICO



ATIS 127.15
 GND CON 121.7
 FARMINGTON TOWER 118.9 (CTAF) 257.8
 DENVER CENTER 118.575 348.7
 UNICOM 122.95

CORTEZ
 114.35 CEZ
 Chan 90(Y)

DURANGO
 116.55 DRO
 Chan 112(Y)

RATTLESNAKE
 115.3 RSK
 Chan 100

SW-1, 11 JUL 2024 to 08 AUG 2024

SW-1, 11 JUL 2024 to 08 AUG 2024

NOTE: Chart not to scale.



DEPARTURE ROUTE DESCRIPTION

Aircraft departure Runways 23 and 25 turn right heading 360° to intercept RSK R-316 to PLATA INT. Thence via (transition) or (assigned route).

CORTEZ TRANSITION (PLATA1.CEZ): From over PLATA INT via RSK R-316 and CEZ R-136 to CEZ VOR/DME.

DURANGO TRANSITION (PLATA1.DRO): From over PLATA INT via DRO R-235 to DRO VOR/DME.

MARKE TRANSITION (PLATA1.MARKE): From over PLATA INT via DRO R-235 to MARKE INT.

RIZAL TRANSITION (PLATA1.RIZAL): From over PLATA INT via DRO R-235 to RIZAL INT.

PLATA ONE DEPARTURE

(PLATA1.PLATA) 05DEC96

FARMINGTON, NEW MEXICO
FOUR CORNERS RGNL (F^{MN})