

HOMESTEAD, FLORIDA

ILS or LOC Z RWY 6

LOC I-HST 109.9	APCH CRS 055°	Rwy Idg 11,201 TDZE 5 Arprt Elev 6
---------------------------	-------------------------	---

AL-494 [USAF]

HOMESTEAD ARB (KHST)

RADAR or DME required.

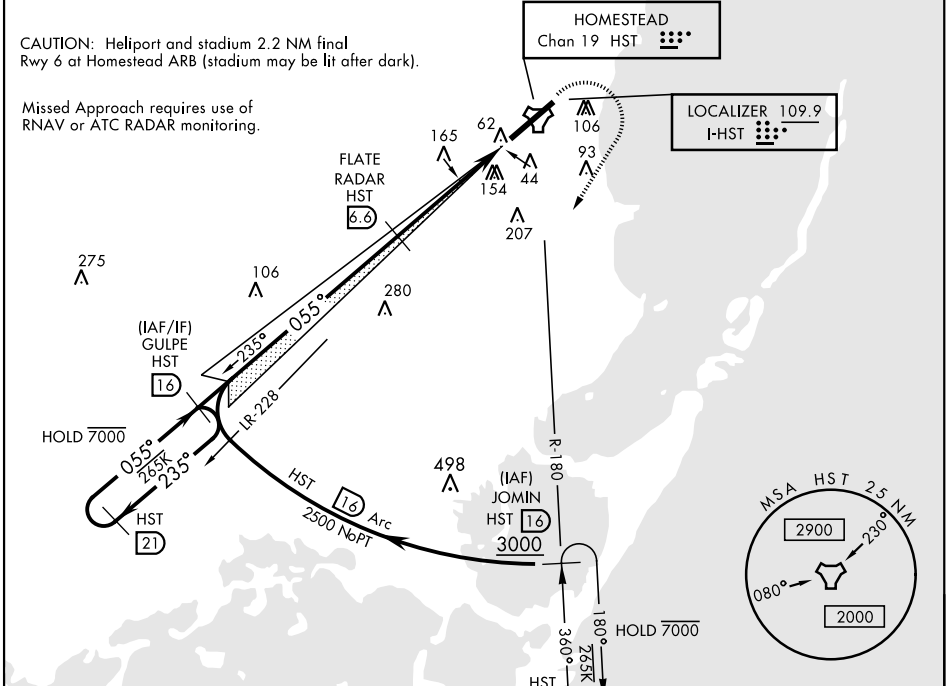
ALSF-1

MISSED APPROACH: Climb to 800 then climbing right turn to 3000 intercept HST TACAN R-180 to JOMIN and hold.

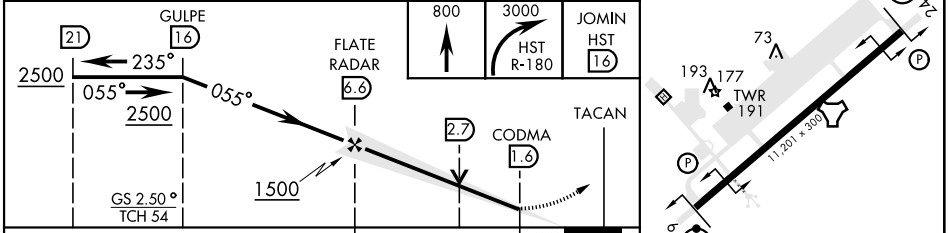
*** When ALS inop, increase RVR to 40, vis to 3/4 mile.
 ** When ALS inop, increase CAT AB RVR to 55, vis to 1 mile; CAT CDE RVR to 60, vis to 1 1/2 miles.

ATIS ★ 132.275 269.9	APP CON 123.8 257.675	TOWER 133.45 279.55	GND CON 121.75 275.8	CLNC DEL 121.75 275.8
--------------------------------	---------------------------------	-------------------------------	--------------------------------	---------------------------------

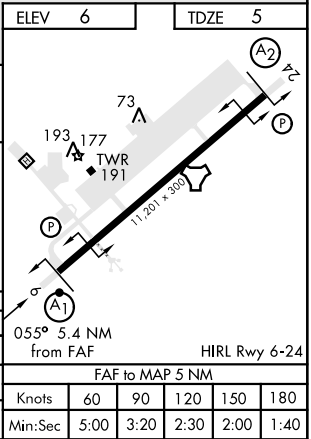
*** Circling NA NW of Rwy 6-24.



ELEV 6	TDZE 5
--------	--------



CATEGORY	A	B	C	D	E
S-ILS 6 *	205/24 200 (200-1/2)				
S-LOC 6 **	460/24 455 (500-1/2) 460/45 455 (500-7/8)				
*** CIRCLING	460-1 454 (500-1)	500-1 494 (500-1)	520-1 1/2 514 (600-1 1/2)	580-2 574 (600-2)	780-2 3/4 774 (800-2 3/4)



HOMESTEAD, FLORIDA 25°29'N-80°23'W HOMESTEAD ARB (KHST)

Amtd 1 30DEC21

ILS or LOC Z RWY 6

SE-3, 11 JUL 2024 to 08 AUG 2024

SE-3, 11 JUL 2024 to 08 AUG 2024

FAF to MAP 5 NM					
Knots	60	90	120	150	180
Min:Sec	5:00	3:20	2:30	2:00	1:40