

MIAMI DEP CON  
125.5 354.1  
ATIS\*  
132.275 269.9  
CLINC DEL  
121.75 275.8  
GND CON  
121.75 275.8  
HOMESTEAD TOWER  
133.45 279.55

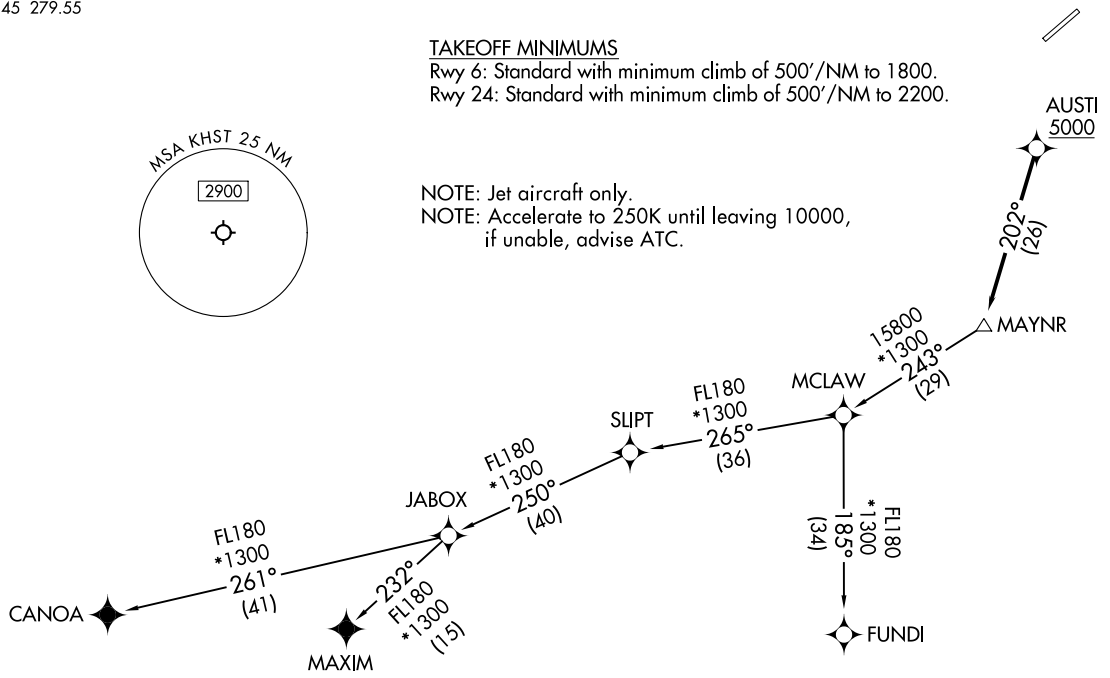
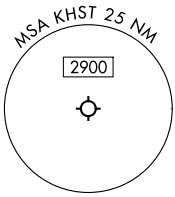
RNAV1 - DME/DME/IRU or GPS.  
From SLIPT to MAXIM: RNAV 1- GPS.  
From SLIPT to CANOA: RNAV 1- GPS.  
RADAR required.

**TOP ALTITUDE:  
ASSIGNED BY ATC**

TAKEOFF MINIMUMS

Rwy 6: Standard with minimum climb of 500'/NM to 1800.  
Rwy 24: Standard with minimum climb of 500'/NM to 2200.

NOTE: Jet aircraft only.  
NOTE: Accelerate to 250K until leaving 10000,  
if unable, advise ATC.



NOTE: Chart not to scale.

(CONTINUED ON FOLLOWING PAGE)

MAYNR TWO DEPARTURE (RNAV)  
(MAYNR2.MAYNR) 21MAR24

HOMESTEAD, FLORIDA  
HOMESTEAD ARB (KHST)

(MAYNR2.MAYNR) 24081  
MAYNR TWO DEPARTURE (RNAV)

HOMESTEAD ARB (KHST)  
HOMESTEAD, FLORIDA

AL-494 (FAA)

# MAYNR TWO DEPARTURE (RNAV)



## DEPARTURE ROUTE DESCRIPTION

TAKEOFF RUNWAYS 6, 24: Climb on heading assigned by ATC for vectors to cross AUSTI at or above 5000, thence. . . .

. . . .on track 202° to MAYNR, then on assigned transition, maintain ATC assigned altitude. Expect clearance to filed altitude within 10 minutes after departure.

CANOA TRANSITION (MAYNR2.CANOA)

FUNDI TRANSITION (MAYNR2.FUNDI)

MAXIM TRANSITION (MAYNR2.MAXIM)

SE-3, 11 JUL 2024 to 08 AUG 2024

SE-3, 11 JUL 2024 to 08 AUG 2024