

TACAN RWY 24

TACAN HST Chan 19	APCH CRS 234°	Rwy ldg 11,201 TDZE 5 Arpt Elev 6
-----------------------------	-------------------------	--

AL-494 [USAF]

HOMESTEAD ARB (KHST)

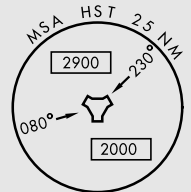
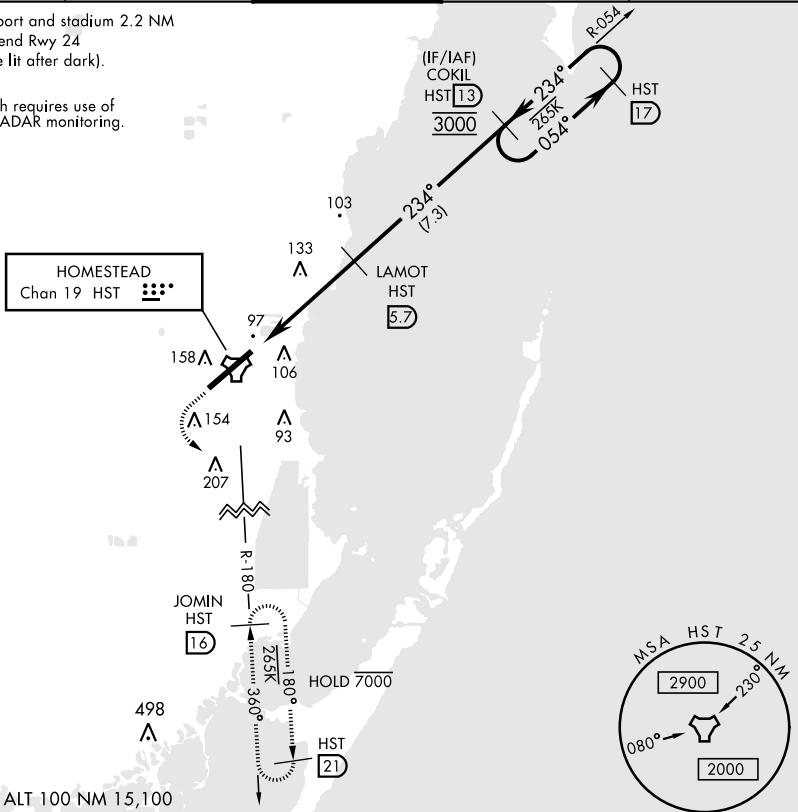
▼ * When ALS inop increase CAT AB RVR to 55, vis to 1 mile; CAT CDE RVR to 60, vis to 1½ miles.
 ** Circling NA NW of Rwy 6-24.

SALS (A2)	MISSED APPROACH: Climb to 800 then climbing left turn to 3000 intercept HST TACAN R-180 to JOMIN and hold.
---------------------	--

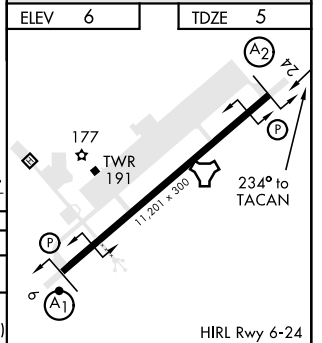
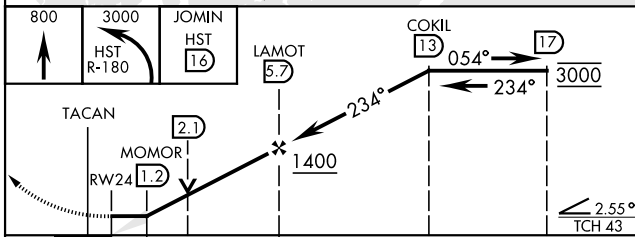
ATIS ★ 132.275 269.9	APP CON 123.8 257.675	TOWER 133.45 279.55	GND CON 121.75 275.8	CLNC DEL 121.75 275.8
--------------------------------	---------------------------------	-------------------------------	--------------------------------	---------------------------------

CAUTION: Heliport and stadium 2.2 NM from departure end Rwy 24 (stadium may be lit after dark).

Misssed approach requires use of RNAV or ATC RADAR monitoring.



EMERG SAFE ALT 100 NM 15,100



CATEGORY	A	B	C	D	E
S-24 *	460/40	455 (500-¾)	460/55	455 (500-1)	
CIRCLING **	460-1 454 (500-1)	500-1 494 (500-1)	520-1½ 514 (600-1½)	580-2 574 (600-2)	780-2¾ 774 (800-2¾)

TACAN RWY 24

SE-3, 11 JUL 2024 to 08 AUG 2024

SE-3, 11 JUL 2024 to 08 AUG 2024

HIRL Rwy 6-24