

# TACAN Z RWY 6

TACAN HST Chan <b>19</b>	APCH CRS <b>056°</b>	Rwy ldg <b>11,201</b> TDZE Arpt Elev <b>5</b> <b>6</b>
-----------------------------	-------------------------	--

AL-494 [USAF]

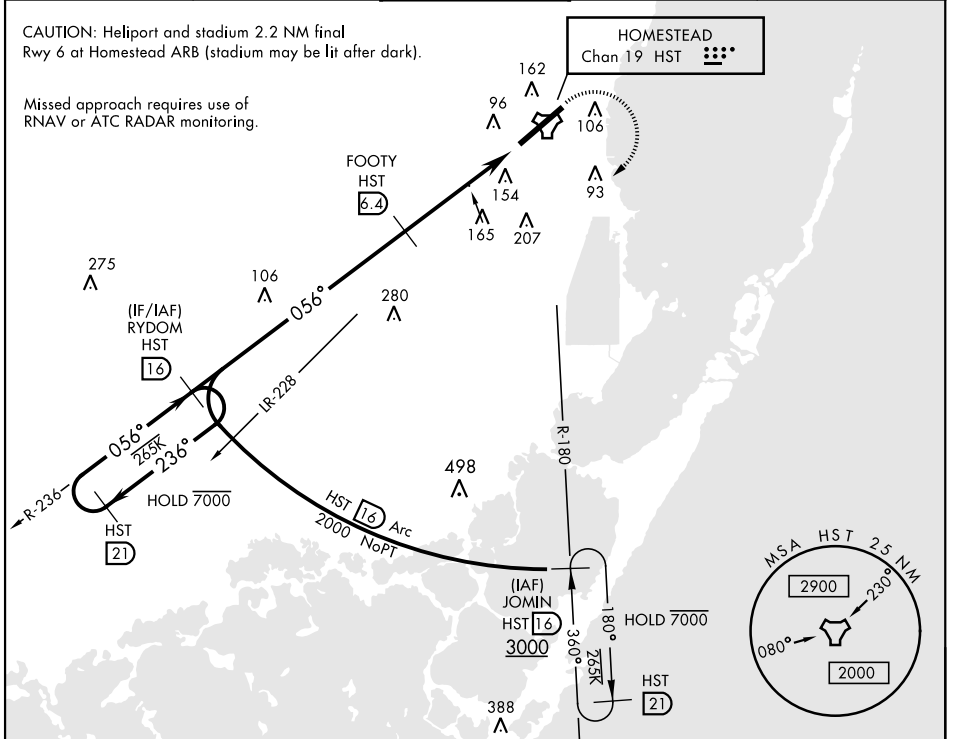
HOMESTEAD ARB (KHST)

▼ \* When ALS inop, increase CAT AB RVR to 55, vis to 1 mile; CAT CDE vis to 1½ miles.  
 \*\* Circling NA NW of Rwy 6-24.

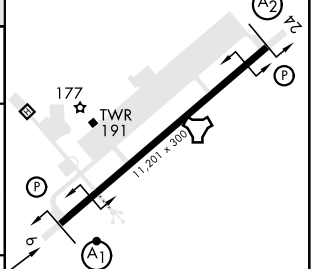
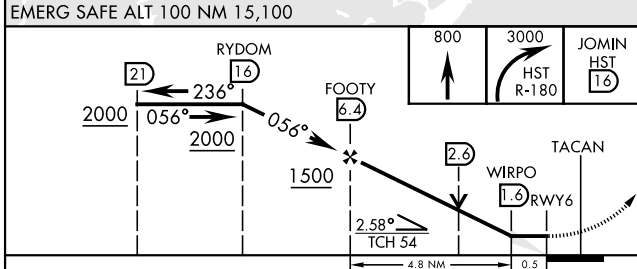
ALSF-1

MISSED APPROACH: Climb to 800 then climbing right turn to 3000 intercept HST TACAN R-180 to JOMIN and hold.

ATIS ★ <b>132.275 269.9</b>	APP CON <b>123.8 257.675</b>	TOWER <b>133.45 279.55</b>	GND CON <b>121.75 275.8</b>	CLNC DEL <b>121.75 275.8</b>
--------------------------------	---------------------------------	-------------------------------	--------------------------------	---------------------------------



ELEV 6	TDZE 5
--------	--------



CATEGORY	A	B	C	D	E
S-6 *	460/24	455 (500-½)	460/45	455 (500-¾)	
** CIRCLING	460-1 454 (500-1)	500-1 494 (500-1)	520-1½ 514 (600-1½)	580-2 574 (600-2)	780-2¾ 774 (800-2¾)

HIRL Rwy 6-24

# TACAN Z RWY 6

SE-3, 11 JUL 2024 to 08 AUG 2024

SE-3, 11 JUL 2024 to 08 AUG 2024