

ILS or LOC RWY 22

LOC I-CVS 109.7	APCH CRS 218°	Rwy Idg 10,003 TDZE 4295 Arprt Elev 4295	AL-512 [USAF]	CANNON AFB (KCVS)
---------------------------	-------------------------	---	---------------	-------------------

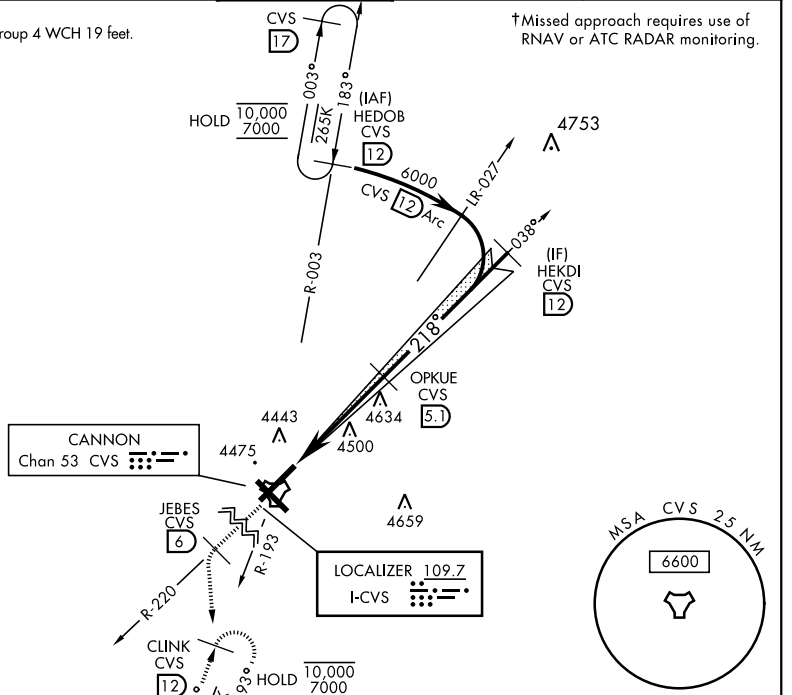
* When ALS inop, increase RVR to 40 and vis to 3/4 miles.
 ** When ALS inop, increase CAT AB RVR to 55 and vis to 1 mile, CAT CDE vis to 1 1/4 miles.

† MISSED APPROACH: Climb to 6000 out CVS TACAN R-220 to 6 DME (JEBES) then turn left climbing to 7000 intercept CVS R-193 to 12 DME (CLINK) and hold.

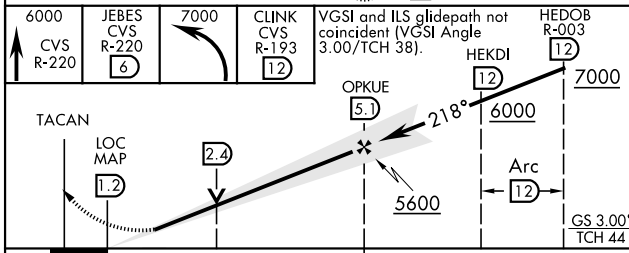
ATIS 119.1 269.9	CANNON APP CON 118.425 352.1	CANNON TOWER 120.4 270.25	GND CON 121.9 275.8	CLNC DEL 120.2 293.225
----------------------------	--	-------------------------------------	-------------------------------	----------------------------------

CAUTION:
 1. ILS Rwy 22 Height Group 4 WCH 19 feet.

† Missed approach requires use of RNAV or ATC RADAR monitoring.



EMERG SAFE ALT 100 NM 8000



ELEV 4295	TDZE 4295
FAF to MAP 4 NM	
Knots	60 90 120 150 180
Min:Sec	4:00 2:40 2:00 1:36 1:20

CATEGORY	A	B	C	D	E
S-ILS 22*	4495/24		200	(200-1/2)	
S-LOC 22**	4720/24 425 (500-1/2)		4720/40 425 (500-3/4)		
CIRCLING	4840-1 545 (600-1)	4860-1 1/2		5000-2 1/4	5020-2 1/2
		565 (600-1 1/2)		705 (800-2 1/4)	725 (800-2 1/2)

ILS or LOC RWY 22

SW-1, 11 JUL 2024 to 08 AUG 2024

SW-1, 11 JUL 2024 to 08 AUG 2024