

CLOVIS, NEW MEXICO

# RNAV (GPS) RWY 31

APCH CRS 308°  
 Rwy Idg 8196  
 TDZE 4270  
 Arprt Elev 4295

- (USAF)

CANNON AFB (KCVS)

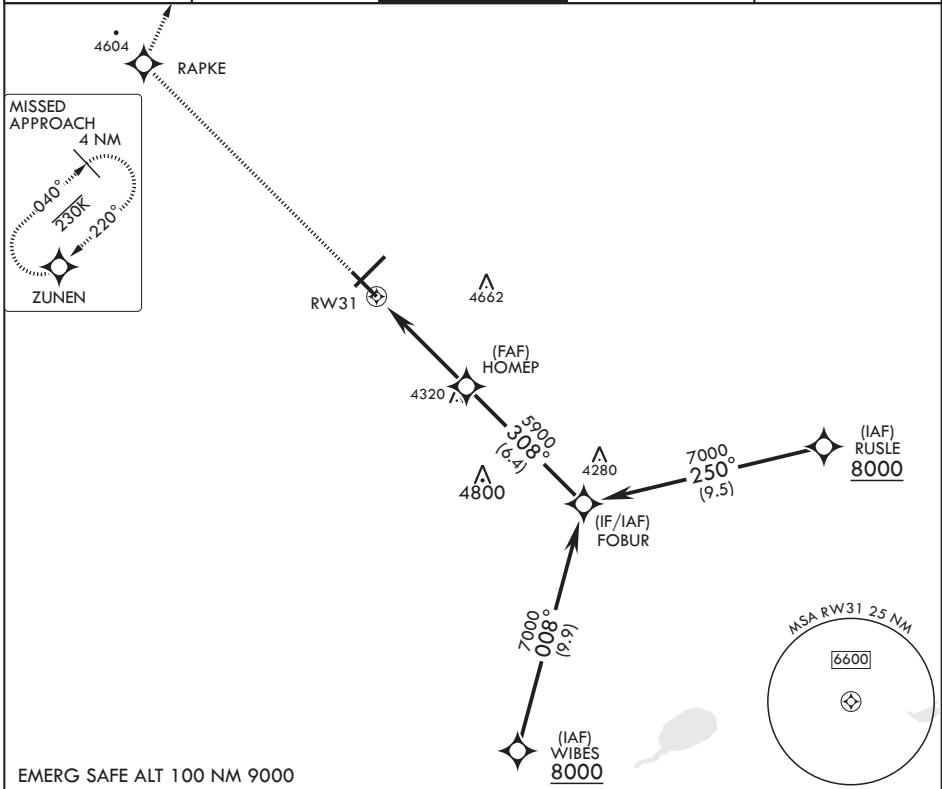
RNP APCH



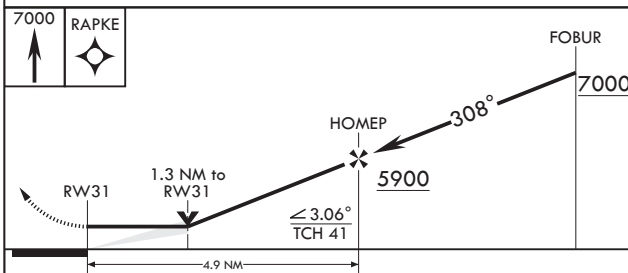
MISSED APPROACH: Climb to 7000 direct RAPKE, then turn right to ZUNEN and hold.

\* When ALS inop, increase CAT AB vis to 1 mile, CAT CDE vis to 1 3/8 miles.

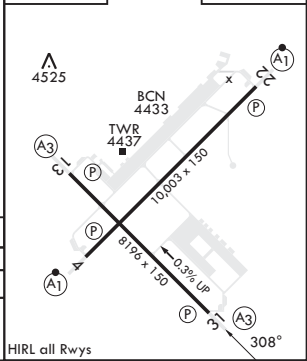
ATIS 119.1 269.9	CANNON APP CON 118.425 352.1	TOWER 120.4 270.25	GND CON 121.9 275.8	CLNC DEL 120.2 293.225
---------------------	---------------------------------	-----------------------	------------------------	---------------------------



EMERG SAFE ALT 100 NM 9000



ELEV 4295 TDZE 4270



CATEGORY	A	B	C	D	E
LNVA MDA*	4720-½	450 (500-½)	4720-7/8	450	(500-7/8)
CIRCLING	4840-1	545 (600-1)	4860-1½ 565 (600-1½)	5000-2¼ 705 (800-2¼)	5020-2½ 725 (800-2½)

CLOVIS, NEW MEXICO

34°23'N - 103°19'W

CANNON AFB (KCVS)

Amdt 5 28DEC23

# RNAV (GPS) RWY 31

SW-1, 11 JUL 2024 to 08 AUG 2024

SW-1, 11 JUL 2024 to 08 AUG 2024