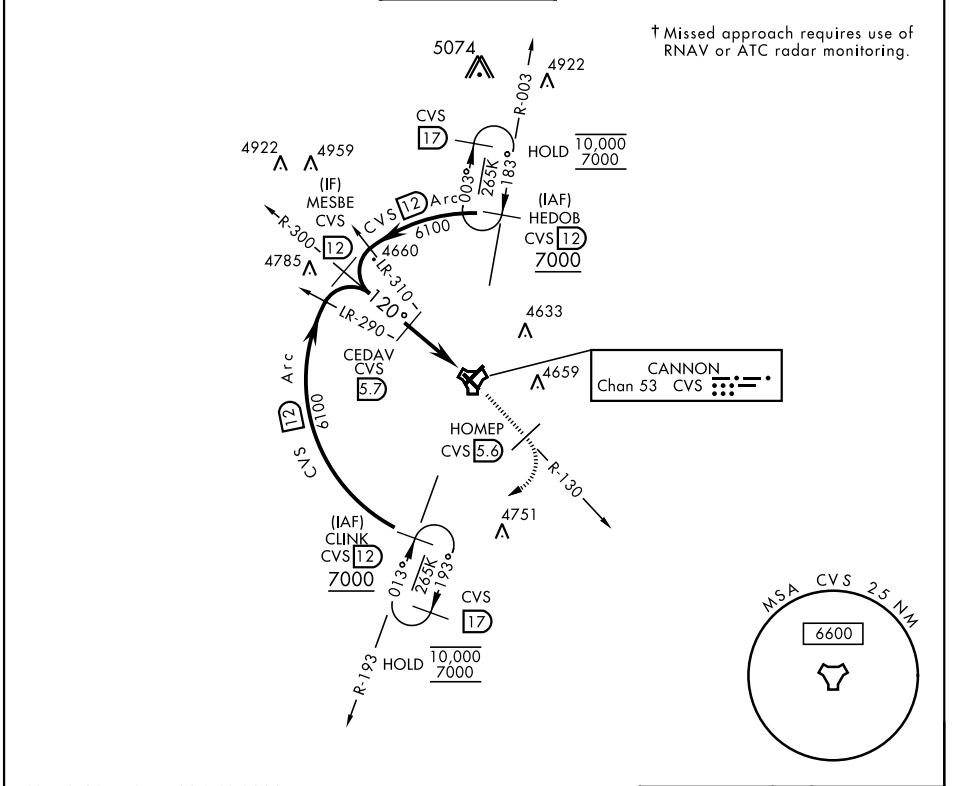


CLOVIS, NEW MEXICO

# TACAN RWY 13

TACAN CVS Chan <b>53</b>	APCH CRS <b>120°</b>	Rwy Idg <b>8196</b> TDZE <b>4294</b> Arprt Elev <b>4295</b>	AL-512 [USAF]	CANNON AFB (KCVS)
▼ * When ALS inop, increase CAT AB vis to 1 mile, CAT CDE vis to 1½ miles.			SSALR (A3)	† MISSED APPROACH: Climb to 6000 out CVS TACAN R-130 to 5.6 DME (HOMEP) then turn right climbing to 7000 intercept CVS R-193 to 12 DME (CLINK) and hold.

ATIS <b>119.1 269.9</b>	CANNON APP CON <b>118.425 352.1</b>	CANNON TOWER <b>120.4 270.25</b>	GND CON <b>121.9 275.8</b>	CLNC DEL <b>120.2 293.225</b>
----------------------------	--	-------------------------------------	-------------------------------	----------------------------------



† Missed approach requires use of RNAV or ATC radar monitoring.

SW-1, 11 JUL 2024 to 08 AUG 2024

SW-1, 11 JUL 2024 to 08 AUG 2024

EMERG SAFE ALT 100 NM 9000

	ELEV 4295		TDZE 4294		
MESBE R-300	6000 CVS R-130	HOMEP CVS R-130	7000 CVS R-193	CLINK CVS R-193	
6100	120°	6000	120°	4525	4421
3.13° TCH 37				4433	4437
				4327	TWR
				4437	
				10.055 x 150	
				8156 x 150	
				0.3% DOWN	
CATEGORY	A	B	C	D	E
S-13*	4800-¾	506 (600-¾)	4800-1	506	(600-1)
CIRCLING	4840-1	545 (600-1)	4860-1½ 565 (600-1½)	5000-2¼ 705 (800-2¼)	5020-2½ 725 (800-2½)
HIRL all rwys					

CLOVIS, NEW MEXICO  
Amdt 2 09NOV17

34° 23'N-103° 19'W

CANNON AFB (KCVS)

# TACAN RWY 13