

TACAN RWY 4

TACAN CVS Chan 53	APCH CRS 048°	Rwy ldg TDZE 4284	10,003 Arprt Elev 4295
----------------------	------------------	----------------------	------------------------------

AL-512 (USAF)

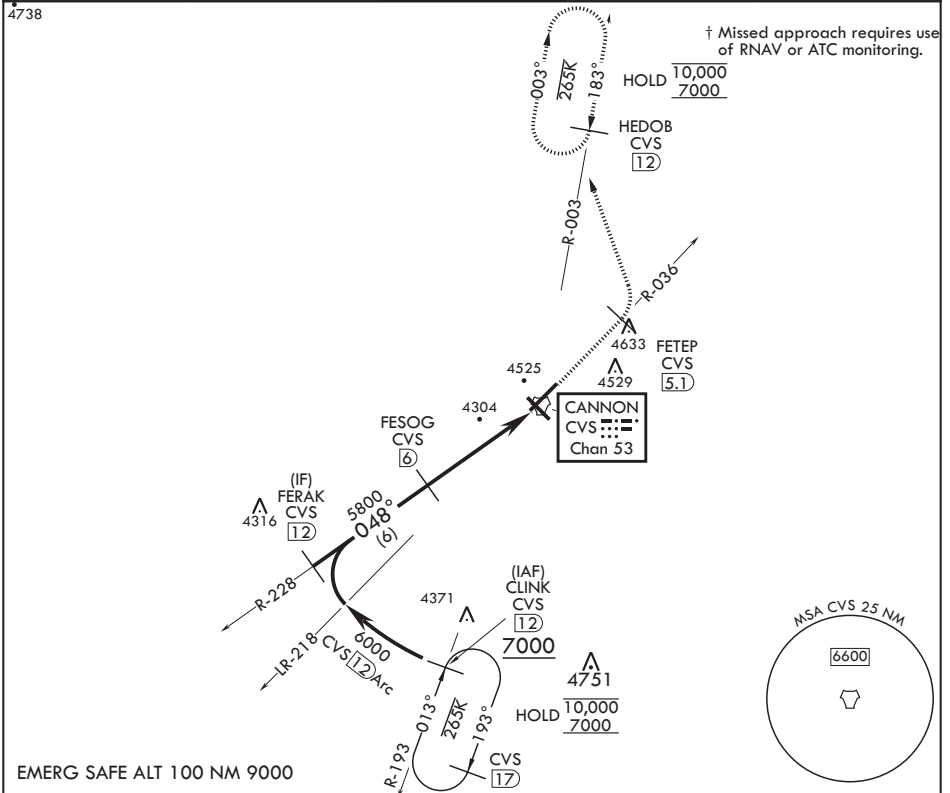
CANNON AFB (KCVS)

▼ * When ALS inop, increase CAT AB RVR to 55, vis to 1 mile; CAT CDE RVR to 60, vis to 1 1/8 miles.



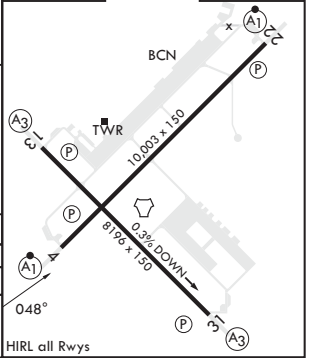
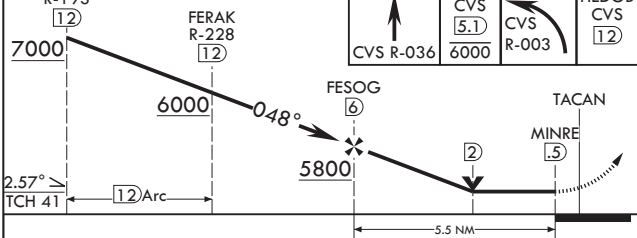
† MISSED APPROACH: Climb to 6000 via CVS TACAN R-036 to 5.1 DME (FETEP), cross FETEP at or below 6000, then turn left climbing to 7000 to intercept CVS TACAN R-003 to 12 DME (HEDOB) and hold.

ATIS 119.1 269.9	CANNON APP CON 118.425 352.1	TOWER 120.4 270.25	GND CON 121.9 275.8	CLNC DEL 120.2 293.225
---------------------	---------------------------------	-----------------------	------------------------	---------------------------



† Missed approach requires use of RNAV or ATC monitoring.

CLINK R-193 7000	FERAK R-228 6000	FESOG 6000	FETEP CVS 5.1 6000	7000 CVS R-003	HEDOB CVS 12 7000	ELEV 4295	TDZE 4284
---------------------	---------------------	---------------	-----------------------	-------------------	----------------------	-----------	-----------



CATEGORY	A	B	C	D	E
S-4*	4700/24 416 (500-½)		4700/40 416		5020-2½ (500-¾)
☐ CIRCLING	4840-1 545 (600-1)		4860-1½ 565 (600-1½)	5000-2¼ 705 (800-2¼)	5020-2½ 725 (800-2½)

CLOVIS, NEW MEXICO 34°23'N - 103°19'W CANNON AFB (KCVS)

Amdt 3 10OCT19

TACAN RWY 4

SW-1, 11 JUL 2024 to 08 AUG 2024

SW-1, 11 JUL 2024 to 08 AUG 2024