

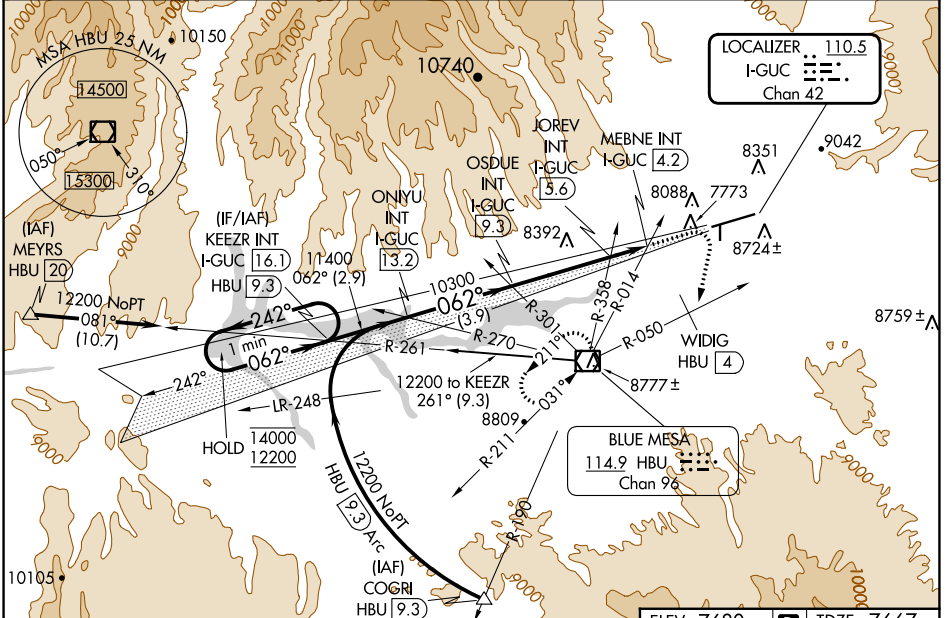
LOC/DME I-GUC <b>110.5</b> Chan <b>42</b>	APP CRS <b>062°</b>	Rwy Idg TDZE Apt Elev <b>9400</b> <b>7667</b> <b>7680</b>
---	------------------------	--

# ILS or LOC RWY 6

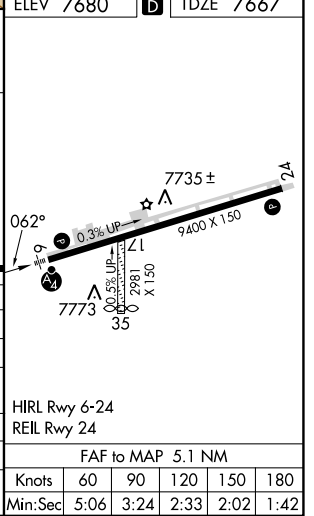
GUNNISON-CRESTED BUTTE RGNL (GUC)

DME required.	MALSF	MISSED APPROACH: Climb to 10000 then climbing right turn to 12000 on heading 180° and HBU VOR/DME R-050 to WIDIG/HBU 4. DME continue on HBU VOR/DME R-050 to HBU VOR/DME and hold.
<p>▼ Rwy 6 helicopter visibility reduction below 3/4 SM NA. Inop table does not apply. Procedure NA when airport closed except by prior arrangement.</p> <p>⚠ -26°C</p> <p>☄ Circling NA to Rwy's 17 and 35.</p>		

AWOS-3PT <b>135.075</b>	DENVER CENTER <b>124.5 350.25</b>	UNICOM <b>122.7 (CTAF)</b>
----------------------------	--------------------------------------	-------------------------------



One Minute Holding Pattern 14000 ← 242° 12200 062° → GS 3.20° TCH 49	KEZZR INT I-GUC [16.1]	10000	12000	HBU R-050	WIDIG HBU [4]	HBU R-050	HBU
	ONIYU INT I-GUC [13.2] OSDUE INT I-GUC [9.3] JOREV INT I-GUC [5.6] MEBNE INT I-GUC [4.2]	10300	9020	2.9 NM	3.9 NM	3.7 NM	1.4 NM
CATEGORY	A	B	C	D			
S-ILS 6	8698-3 1031 (1100-3)			NA			
S-LOC 6	9020-3 1353 (1400-3)						
CIRCLING	9260-3	1580 (1600-3)	9540-3 1860 (1900-3)	10040-3 2360 (2400-3)			
JOREV FIX MINIMUMS							
S-LOC 6	8640-3 973 (1000-3)						
CIRCLING	9260-3	1580 (1600-3)	9540-3 1860 (1900-3)	10040-3 2360 (2400-3)			



SW-1, 11 JUL 2024 to 08 AUG 2024

SW-1, 11 JUL 2024 to 08 AUG 2024