

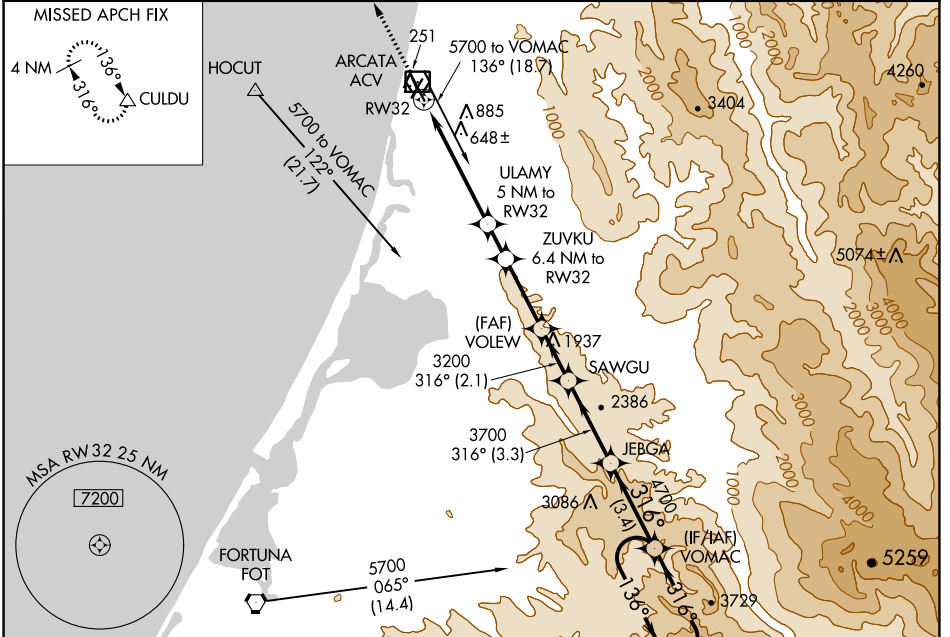
WAAS CH 63108 W32A	APP CRS 316°	Rwy Idg TDZE 221 Apt Elev 222	5846
--	------------------------	---	-------------

RNAV (GPS) RWY 32

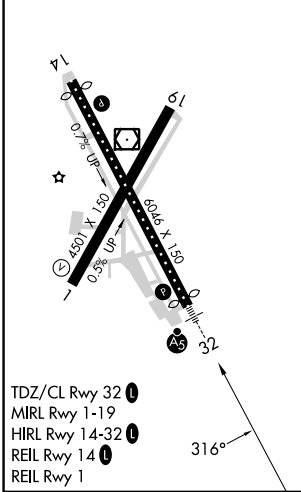
CALIFORNIA REDWOOD COAST-HUMBOLDT COUNTY (ACV)

▽ Baro-VNAV NA. Circling NA northeast of Rwy 14-32. ▲ DME/DME RNP-0.3 NA.	MALSR 	MISSED APPROACH: Climb to 3000 direct CULDU and hold.
--	------------------	---

ASOS 118.525	SEATTLE CENTER 124.85 306.3	UNICOM 123.0 (CTAF)
------------------------	---------------------------------------	-------------------------------



ELEV 222	D	TDZE 221
----------	----------	----------



TDZ/CL Rwy 32 **①**
MIRL Rwy 1-19 **②**
HIRL Rwy 14-32 **③**
REIL Rwy 14 **④**
REIL Rwy 1 **⑤**

3000 CULDU	VGSi and RNAV glidepath not coincident (VGSi Angle 3.00/TCH 43).				JEBGA	VOMAC	5 NM Holding Pattern
*LNAV only.	ULAMY 6.4 NM to RW32	ZUVKU 6.4 NM to RW32	VOLEW 3200	SAWGU	3700	4700	GP 3.00° TCH 47
2 NM to RW32	1860	2300*	3200	3.3 NM	3.4 NM		
2 NM	3 NM	1.4 NM	2.8 NM	2.1 NM	3.3 NM	3.4 NM	
CATEGORY	A		B		C		D
LPV DA			441/18		220 (300-½)		
LNAV/VNAV DA			1056-2½		835 (900-2½)		
LNAV MDA	900/24 679 (700-½)		900/40 679 (700-¾)		900-1½ 679 (700-1½)		
C CIRCLING	900-1 678 (700-1)				900-2 678 (700-2)		900-2¼ 678 (700-2¼)

SW-2, 11 JUL 2024 to 08 AUG 2024

SW-2, 11 JUL 2024 to 08 AUG 2024