

HI-TACAN RWY 32

TACAN BKF Chan 33	APCH CRS 328°	Rwy Idg 11,006 TDZE 5663 Arprt Elev 5663
-----------------------------	-------------------------	---

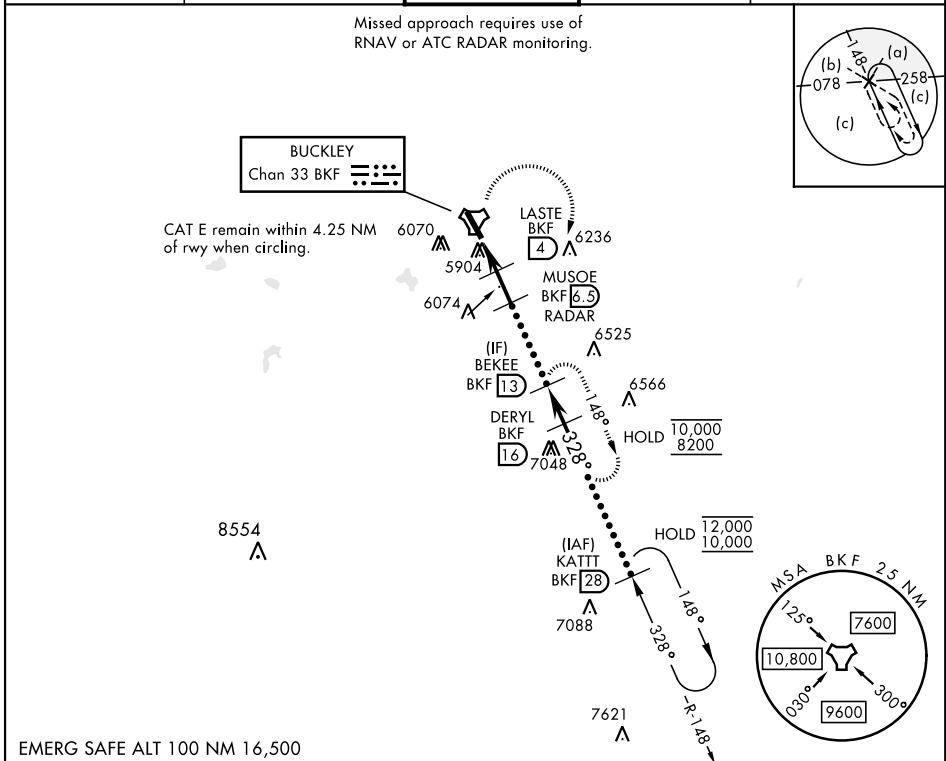
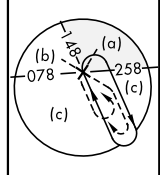
AL-538 [USAF]

BUCKLEY SFB (KBKF)

▼ * When ALS inop, increase CAT CDE vis to 1 1/4 miles. ** Circling NA East of Rwy 14-32.	ALSF-1 	MISSED APPROACH: Climbing right turn to 8200 and intercept BKF TACAN R-148 direct BEKEE and hold or as directed by ATC.

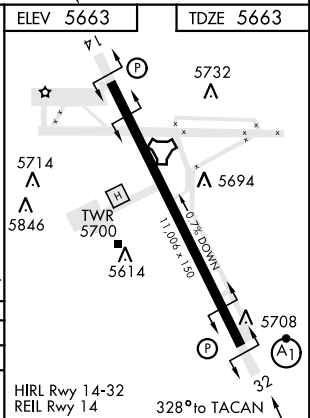
ATIS ★ 119.675 259.3	DENVER APP CON 128.45 251.075	TOWER ★ 121.0 291.675	GND CON 121.6 275.8	CLNC DEL 121.6 275.8
--------------------------------	---	---------------------------------	-------------------------------	--------------------------------

Missed approach requires use of RNAV or ATC RADAR monitoring.



EMERG SAFE ALT 100 NM 16,500

8200 BKF R-148	BEKEE BKF 13			
TACAN CENAR 1.7	LASTE 4	MUSOE 6.5 RADAR	BEKEE 13	DERYL 16
			10,000	KATTI 28
			8000	10,000
			7400	
			6600	
			3.02°	TCH 45
			0.5	2.3 NM
			2.5 NM	
CATEGORY	C	D	E	
S-32 *	6280-1 1/8	617 (700-1 1/8)		
CIRCLING **	6360-2 697 (700-2)	6400-2 1/4 737 (800-2 1/4)	6420-2 3/4 757 (800-2 3/4)	



HI-TACAN RWY 32

SW-1, 11 JUL 2024 to 08 AUG 2024

SW-1, 11 JUL 2024 to 08 AUG 2024