

# TACAN RWY 32

TACAN BKF Chan <b>33</b>	APCH CRS <b>328°</b>	Rwy ldg <b>11,006</b> TDZE <b>5663</b> Arprt Elev <b>5663</b>	AL-538 [USAF]	BUCKLEY SFB (KBKF)
-----------------------------	-------------------------	---	---------------	--------------------

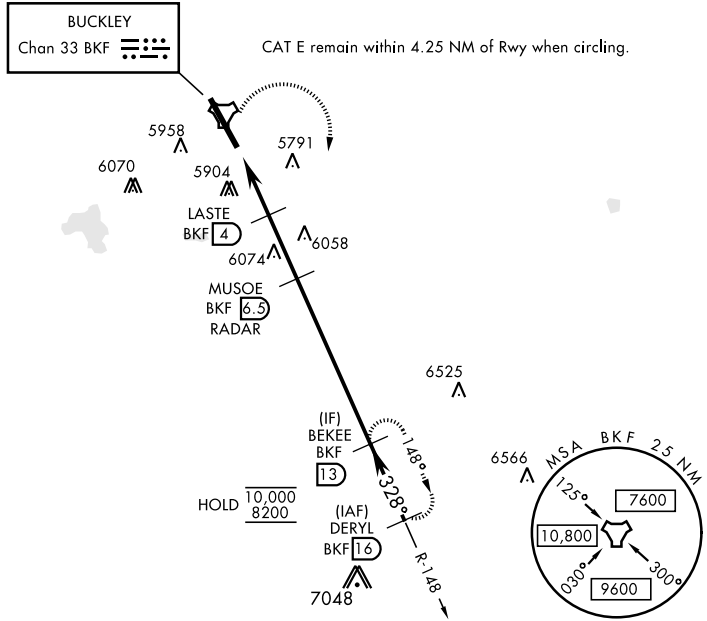
▼ \* When ALS inop, increase CAT AB RVR to 55 and vis to 1 mile, CAT CDE vis to 1¾ miles.  
 \*\* Circling NA east of Rwy 14-32.



**MISSED APPROACH:** Climbing right turn to 8200 and intercept BKF TACAN R-148 direct BEKEE and hold or as directed by ATC.

ATIS ★ <b>119.675 259.3</b>	DENVER APP CON <b>128.45 251.075</b>	TOWER ★ <b>121.0 291.675</b>	GND CON <b>121.6 275.8</b>	CLNC DEL <b>121.6 275.8</b>
--------------------------------	---	---------------------------------	-------------------------------	--------------------------------

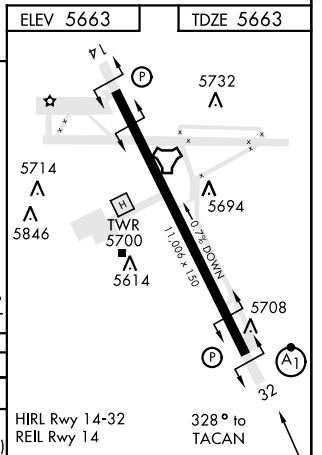
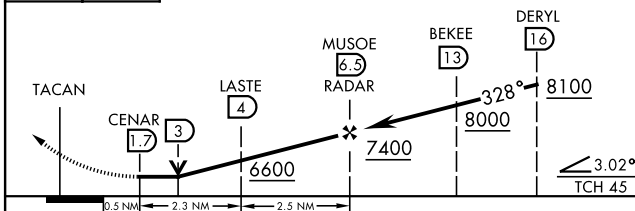
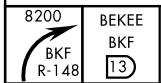
Missed approach requires use of RNAV or ATC RADAR monitoring.



SW-1, 11 JUL 2024 to 08 AUG 2024

SW-1, 11 JUL 2024 to 08 AUG 2024

EMERG SAFE ALT 100 NM 16,500



CATEGORY	A	B	C	D	E
S-32*	6280/24	617 (700-½)	6280-1⅜	617 (700-1⅜)	
CIRCLING**	6280-1 617 (700-1)	6360-2 697 (700-2)	6400-2¼ 737 (800-2¼)	6420-2¾ 757 (800-2¾)	

HIRL Rwy 14-32  
 REIL Rwy 14  
 328° to TACAN

# TACAN RWY 32