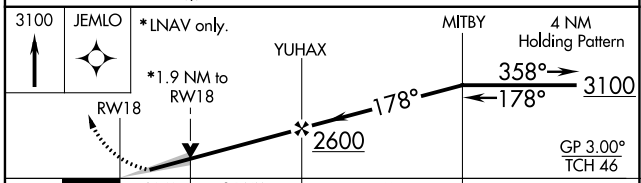
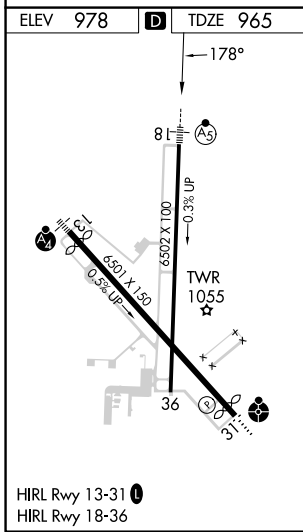
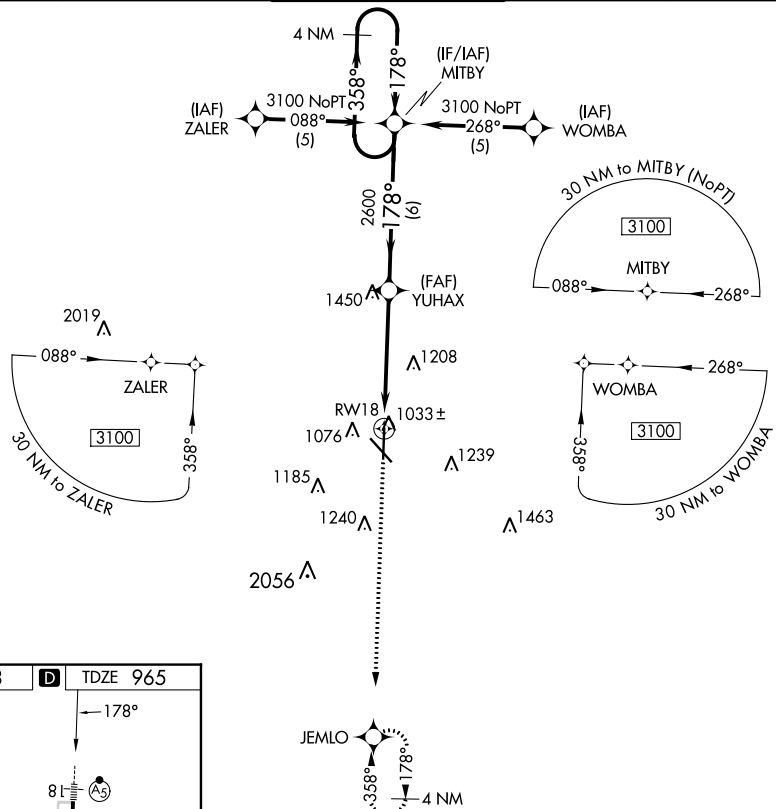


WAAS CH <b>97309</b> <b>W18A</b>	APP CRS <b>178°</b>	Rwy Idg TDZE Apt Elev	<b>6499</b> <b>965</b> <b>978</b>
--	------------------------	-----------------------------	---

# RNAV (GPS) RWY 18

JOPLIN RGNL (JLN)

RNP APCH. ▼ For uncompensated Baro-VNAV systems, procedure NA below -16°C (4°F) or above 54°C (130°F). For inoperative MALSR, increase LPV all Cats visibility to RVR 5000.			MALSR 	MISSED APPROACH: Climb to 3100 direct JEMLO and hold.	
ATIS <b>120.85</b>	KANSAS CITY CENTER <b>128.6 282.325</b>	JOPLIN TOWER * <b>119.8</b> (CTAF) <b>0</b>	GND CON <b>121.6</b>	UNICOM <b>122.95</b>	



CATEGORY	A	B	C	D
LPV DA		1220/24	255 (300-½)	
LNAV/VNAV DA		1460/60	495 (500-1¼)	
LNAV MDA	1600/24	635 (700-½)	1600/60 635 (700-1¼)	1600-1½ 635 (700-1½)
CIRCLING		1600-1¾	622 (700-1¾)	1600-2 622 (700-2)

NC-3, 11 JUL 2024 to 08 AUG 2024

NC-3, 11 JUL 2024 to 08 AUG 2024