

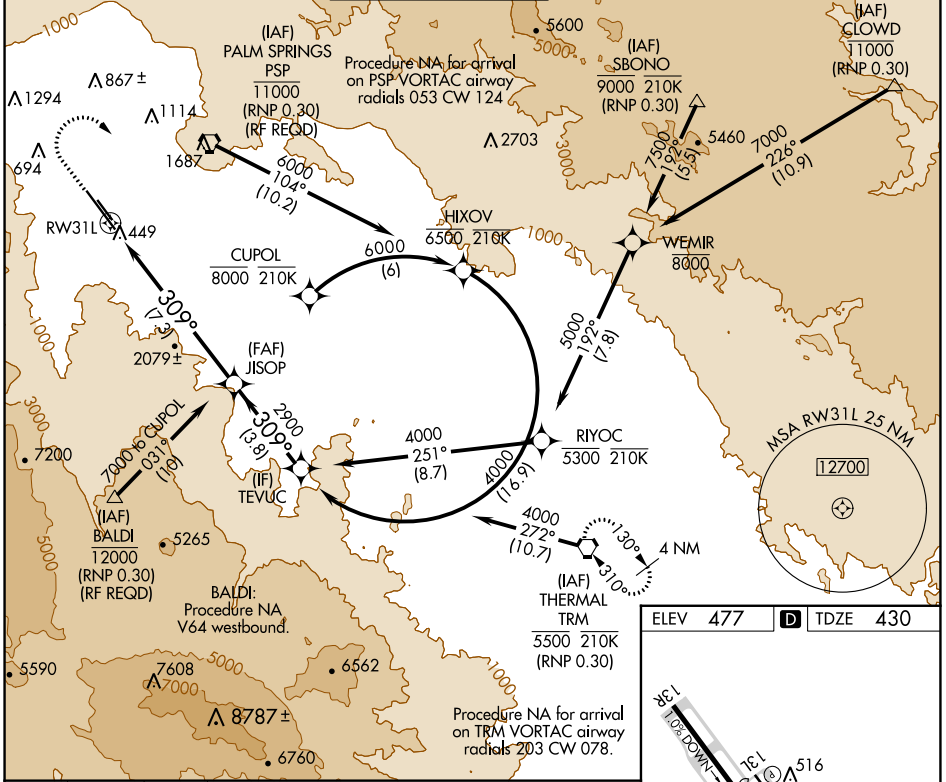
APP CRS	Rwy Idg	8500
309°	TDZE	430
	Apt Elev	477

RNAV (RNP) Y RWY 31L

PALM SPRINGS INTL (PSP)

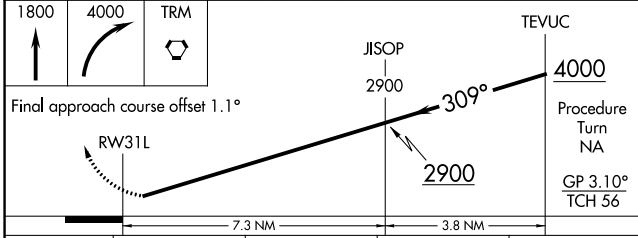
RNP AR APCH.		MISSED APPROACH: Climb to 1800, then climbing right turn to 4000 direct TRM VORTAC and hold.			
<p>▽ ▲</p> <p>Missed approach requires minimum climb of 340' per NM to 3000. For uncompensated Baro-VNAV systems, procedure NA below 2°C or above 54°C.</p>					

ATIS 124.65	SOCAL APP CON 126.7 370.95 135.275 251.1	PALM SPRINGS TOWER* 119.7 (CTAF) 377.05	GND CON 121.9	CLNC DEL 128.35	UNICOM 122.95
-----------------------	--	---	-------------------------	---------------------------	-------------------------

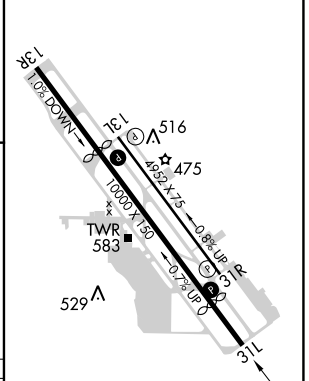


SW-3, 11 JUL 2024 to 08 AUG 2024

SW-3, 11 JUL 2024 to 08 AUG 2024



ELEV	477	D	TDZE	430
------	-----	---	------	-----



CATEGORY	A	B	C	D
RNP 0.30 DA	734-1 304 (300-1)			

AUTHORIZATION REQUIRED

HIRL Rwy 13R-31L **Ⓛ**
 MIRL Rwy 13L-31R
 REL Rwy 13R and 31L **Ⓛ**
 REL Rwy 13L and 31R