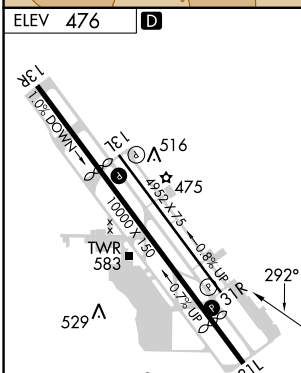
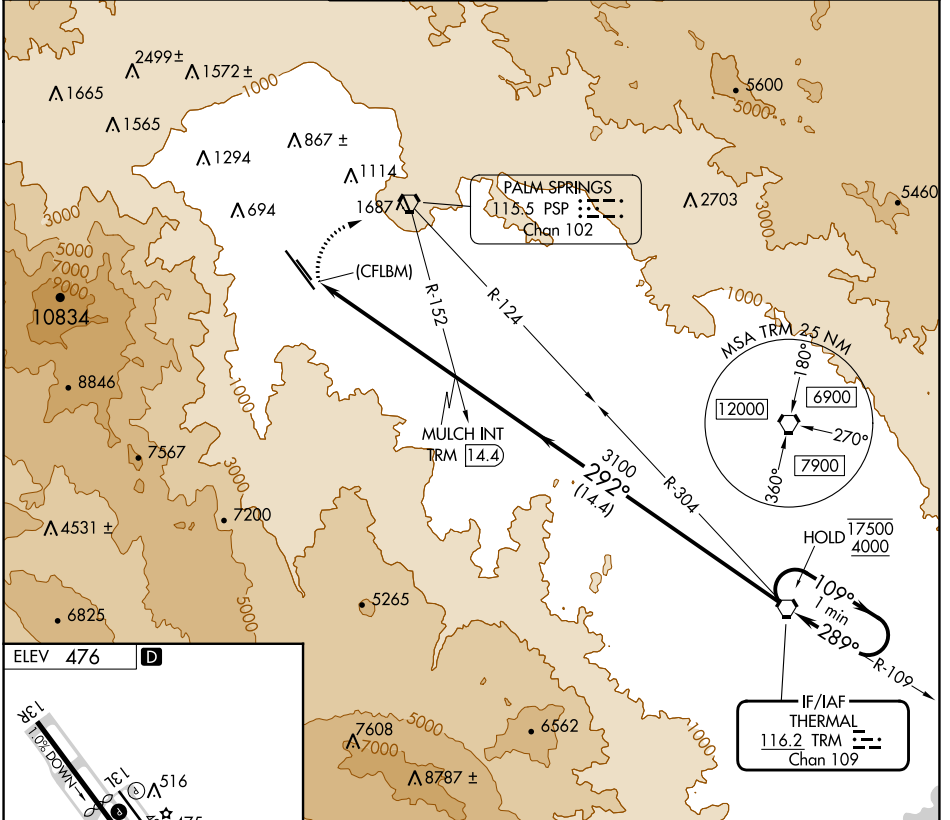


VORTAC TRM <b>116.2</b> Chan <b>109</b>	APP CRS <b>292°</b>	Rwy Idg TDZE Apt Elev <b>N/A</b> <b>N/A</b> <b>476</b>
---	------------------------	---

**VOR-B**  
PALM SPRINGS INTL (PSP)

**⚠** Circling NA southwest of Rwy 13R-31L. MISSED APPROACH: Climbing right turn to 4000 direct PSP VORTAC and on PSP R-124 and TRM R-304 to TRM VORTAC and hold.

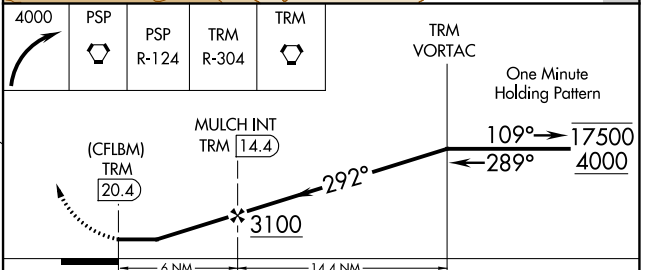
ATIS <b>124.65</b>	SOCAL APP CON <b>126.7 370.95</b> <b>135.275 251.1</b>	PALM SPRINGS TOWER* <b>119.7 (CTAF) 0 377.05</b>	GND CON <b>121.9</b>	CLNC DEL <b>128.35</b>	UNICOM <b>122.95</b>
-----------------------	--	---	-------------------------	---------------------------	-------------------------



HIRL Rwy 13R-31L  
MIRL Rwy 13L-31R  
REIL Rwy 13R and 31L  
REIL Rwy 13L and 31R

FAF to MAP 6 NM

Knots	60	90	120	150	180
Min:Sec	6:00	4:00	3:00	2:24	2:00



CATEGORY	A	B	C	D
CIRCLING	2100-1¼ 1624 (1700-1¼)	2100-1½ 1624 (1700-1½)	2100-3 1624 (1700-3)	

SW-3, 11 JUL 2024 to 08 AUG 2024

SW-3, 11 JUL 2024 to 08 AUG 2024