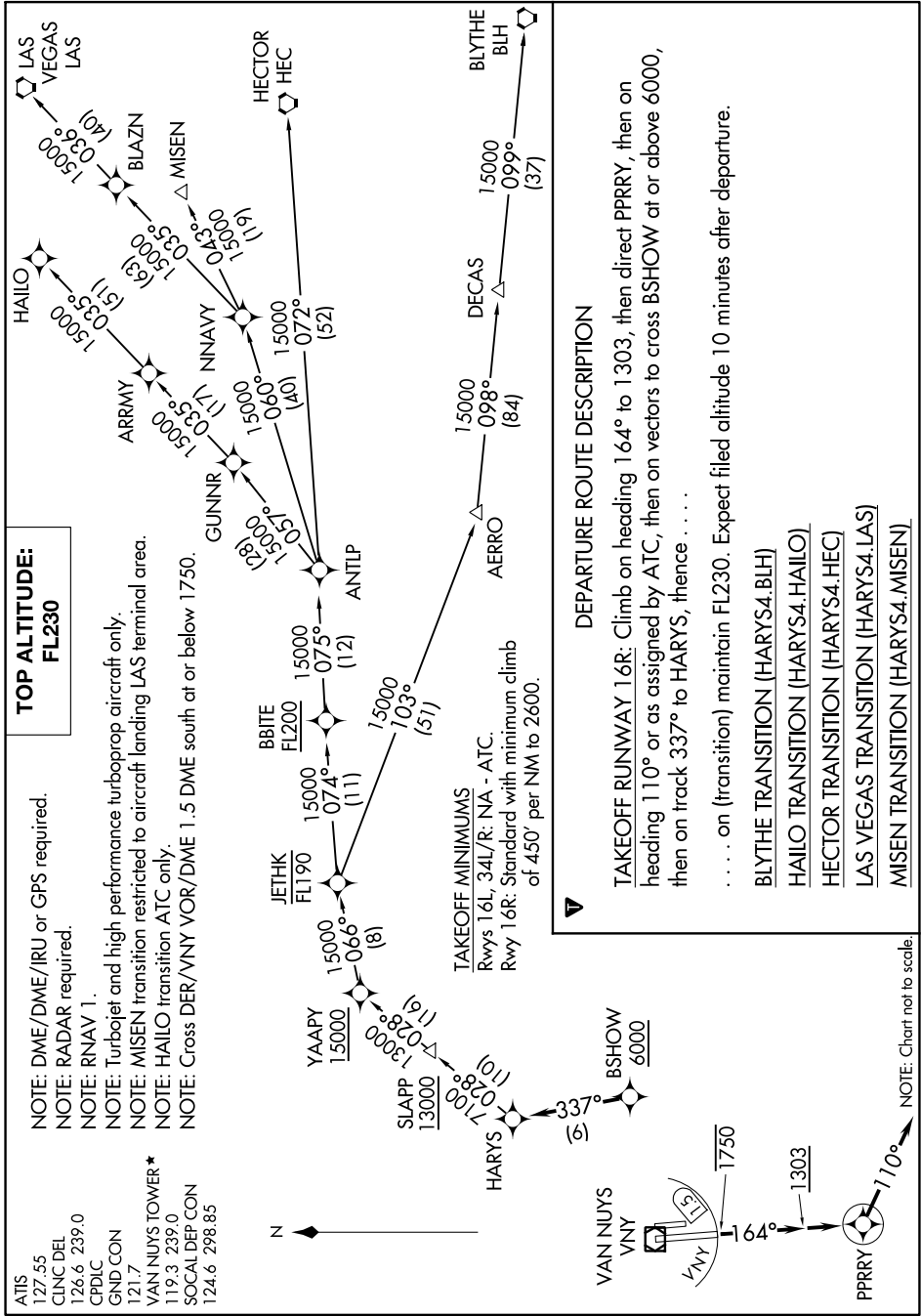


HARYS FOUR DEPARTURE (RNAV)

AL-552 (FAA)

VAN NUYS (VNY)
VAN NUYS, CALIFORNIA

SW-3, 11 JUL 2024 to 08 AUG 2024



HARYS FOUR DEPARTURE (RNAV)

(HARYS4.HARYS) 10SEP20

VAN NUYS, CALIFORNIA
VAN NUYS (VNY)

SW-3, 11 JUL 2024 to 08 AUG 2024

NOTE: Chart not to scale.

ATIS 127.55
 CLNC DEL 126.6 239.0
 CPDLC
 GND CON
 121.7
 VAN NUYS TOWER* 119.3 239.0
 SOCIAL DEP CON 124.6 298.85

NOTE: DME/DME/IRU or GPS required.
 NOTE: RADAR required.
 NOTE: RNAV 1.
 NOTE: Turbojet and high performance turboprop aircraft only.
 NOTE: MISEN transition restricted to aircraft landing LAS terminal area.
 NOTE: HAILLO transition ATC only.
 NOTE: Cross DER/VNY VOR/DME 1.5 DME south at or below 1750.

TAKEOFF MINIMUMS
 Rwy 16L, 34L/R: NA - ATC.
 Rwy 16R: Standard with minimum climb of 450' per NM to 2600.