

SPOKANE, WASHINGTON

# RNAV (GPS) RWY 5

APCH CRS	Rwy Idg	<b>13,899</b>
<b>051°</b>	TDZE	<b>2462</b>
	Arprt Elev	<b>2462</b>

AL-553 (USAF)

FAIRCHILD AFB (KSKA)

RNP APCH

RADAR required for KNOCK holding.

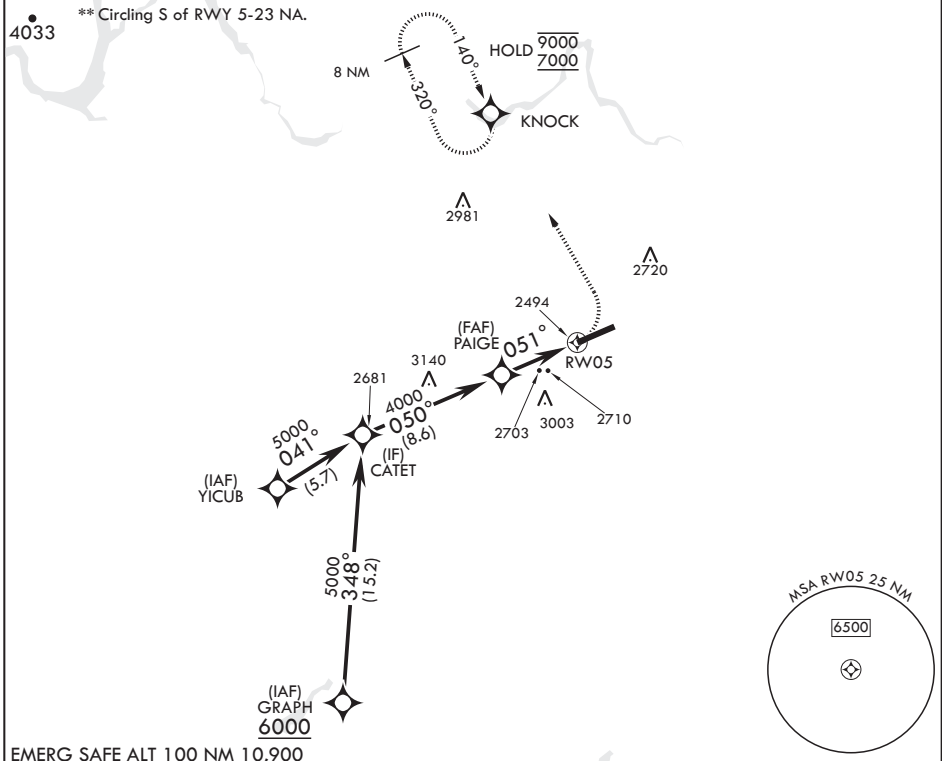
▼ \* When ALS inop, increase CAT A RVR to 55, vis to 1 mile, CAT B RVR to 60, vis to 1 1/4 miles, and CAT CDE vis to 2 1/2 miles.

ALSF-2

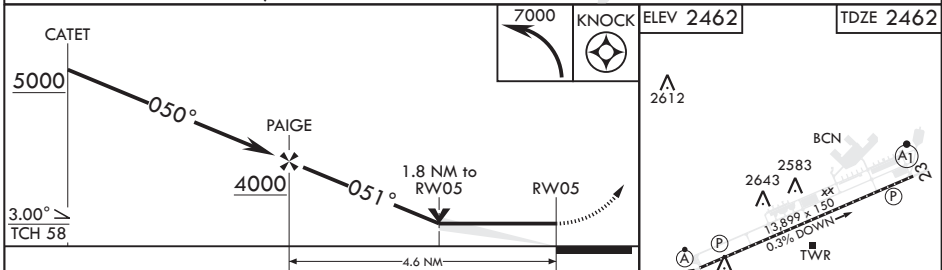


MISSED APPROACH: Climbing left turn to 7000 direct KNOCK and hold, continue climb in hold to 7000.

ATIS <b>257.625</b>	SPOKANE APP CON <b>123.75 282.25</b> (208°-028°) <b>133.35 263.0</b> (029°-207°)	TOWER <b>120.35 233.7</b>	GND CON <b>123.6 275.8</b>
------------------------	----------------------------------------------------------------------------------------	------------------------------	-------------------------------



EMERG SAFE ALT 100 NM 10,900



CATEGORY	A	B	C	D	E
LNAY MDA*	3100/24	638 (700-½)	3100-1⅓	638	(700-1¼)
<b>C</b> CIRCLING**	3100-1	638 (700-1)	3100-1¼	3100-2	3600-3
			638 (700-1¼)	638 (700-2)	1138 (1200-3)

HIRL all Rwys  
TDZL/CL Rwy 5

SPOKANE, WASHINGTON

47°37'N - 117°39'W

FAIRCHILD AFB (KSKA)

Amdt 2 03NOV22

# RNAV (GPS) RWY 5

NW-1, 11 JUL 2024 to 08 AUG 2024

NW-1, 11 JUL 2024 to 08 AUG 2024