

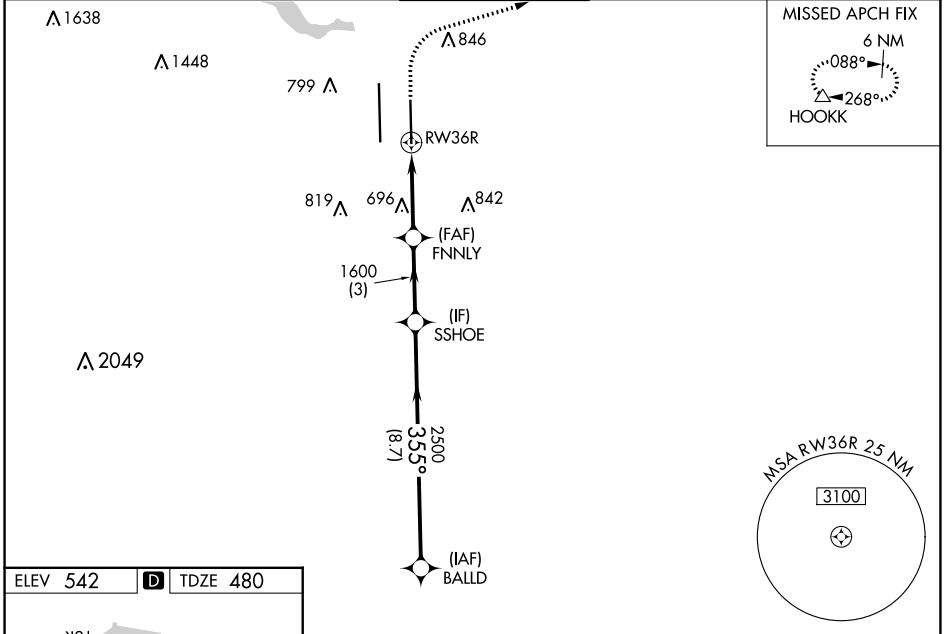
WAAS CH 99429 W36B	APP CRS 355°	Rwy Idg TDZE Apt Elev	9000 480 542
--	------------------------	-----------------------------	---

RNAV (GPS) Y RWY 36R

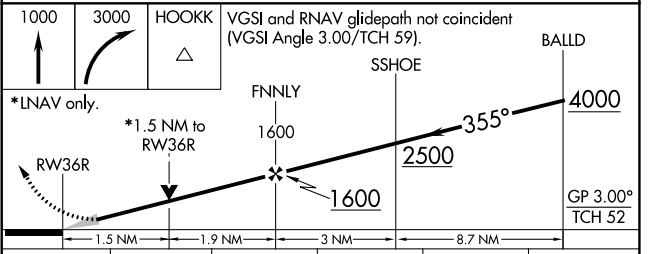
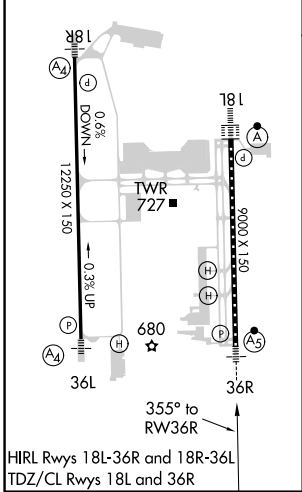
AUSTIN-BERGSTROM INTL (AUS)

RNP APCH-GPS.	MALSRS 	MISSED APPROACH: Climb to 1000 then climbing right turn to 3000 direct HOOKK and hold.
<p>⚠ Simultaneous approach authorized. LNAV procedure NA during simultaneous operations. Use of FD or AP required during simultaneous operations. For uncompensated Baro-VNAV systems, LNAV/VNAV NA below -5°C or above 54°C. For inop ALS increase LPV Cat E visibility to RVR 4000, LNAV/VNAV all Cats visibility to 1 3/8 SM and LNAV Cat C/D/E visibility to 1 3/8 SM.</p>		

D-ATIS 124.4	AUSTIN APP CON 127.225 317.65 (EAST) 120.875 270.25 (SOUTH) 119.0 370.85 (WEST)	AUSTIN TOWER 121.0 281.5	GND CON 121.9 348.6	CLNC DEL 125.5 263.0	CPDLC
------------------------	---	------------------------------------	-------------------------------	--------------------------------	-------



ELEV 542	D	TDZE 480
----------	----------	----------



CATEGORY	A	B	C	D	E
LPV DA	680/18 200 (200-1/2)				
LNAV/VNAV DA	970/50 490 (500-1)				
LNAV MDA	1000/24	520 (500-1/2)	1000/55 520 (500-1)		
C CIRCLING	1040-1 498 (500-1)	1120-1 578 (600-1)	1200-1 3/4 658 (700-1 3/4)	1200-2 658 (700-2)	1520-3 978 (1000-3)

SC-3, 11 JUL 2024 to 08 AUG 2024

SC-3, 11 JUL 2024 to 08 AUG 2024