

APP CRS 229°	Rwy Idg 5898
	TDZE 13
	Apt Elev 13

RNAV (RNP) Z RWY 23

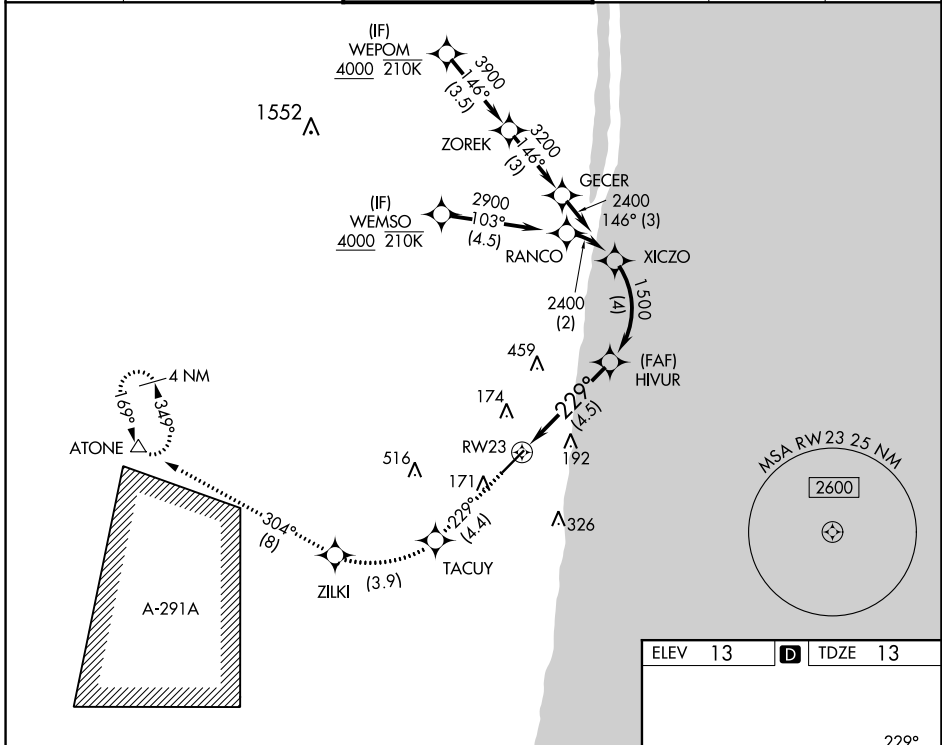
BOCA RATON (BCT)

RNP AR APCH. RF Required.

▼ For uncompensated Baro-VNAV systems, procedure NA below -15°C or above 54°C. In minimum visibility conditions, bright lights on highway ¼ mile north of airport may be mistaken for runway lights.

MISSED APPROACH: Climb to 2100 on track 229° to TACUY, right turn to ZILKI and track 304° to ATONE and hold.

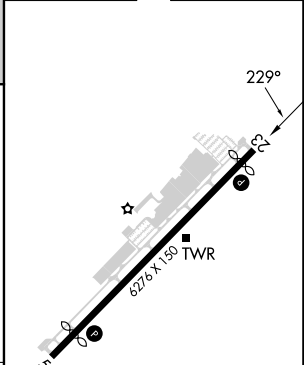
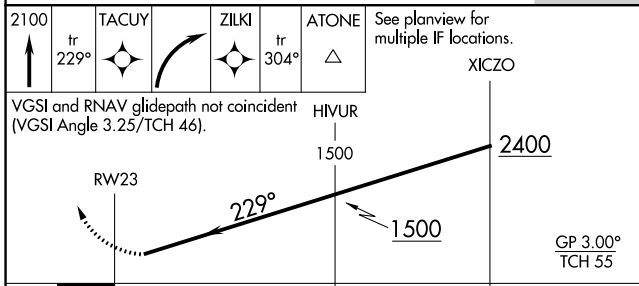
AWOS-3 121.125	PALM BEACH APP CON 127.35 343.6	BOCA RATON TOWER ★ 118.425 (CTAF) 0	GND CON 121.8	CLNC DEL 121.8	GCO 127.35
--------------------------	---	---	-------------------------	--------------------------	----------------------



SE-3, 11 JUL 2024 to 08 AUG 2024

SE-3, 11 JUL 2024 to 08 AUG 2024

ELEV 13	D TDZE 13
---------	------------------



2100	TACUY	ZILKI	ATONE	See planview for multiple IF locations.	
↑	↖	↖	△		
tr 229°			tr 304°		
VGSI and RNAV glidepath not coincident (VGSI Angle 3.25/TCH 46).					
RW23		HIVUR	XICZO		
1500		2400			
229°		1500		GP 3.00° TCH 55	
4.5 NM		4 NM			
CATEGORY	A	B	C	D	
RNP 0.30 DA	519-1⅓		506 (600-1⅓)		

AUTHORIZATION REQUIRED

MIRL Rwy 5-23 0
REIL Rws 5 and 23 0