

GULFPORT, MISSISSIPPI

# HI-ILS Y or LOC Y RWY 14

LOC I-GPT <b>110.9</b>	APCH CRS <b>137°</b>	Rwy Idg TDZE Arpt Elev <b>9002</b> <b>27</b> <b>28</b>
---------------------------	-------------------------	---

[USAF]

GULFPORT-BILOXI INTL (KGPT)

RADAR or DME required

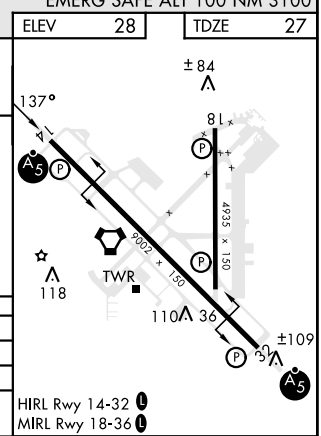
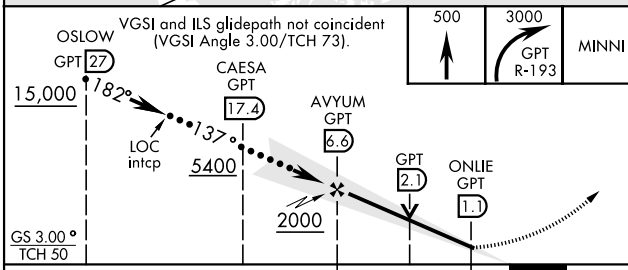
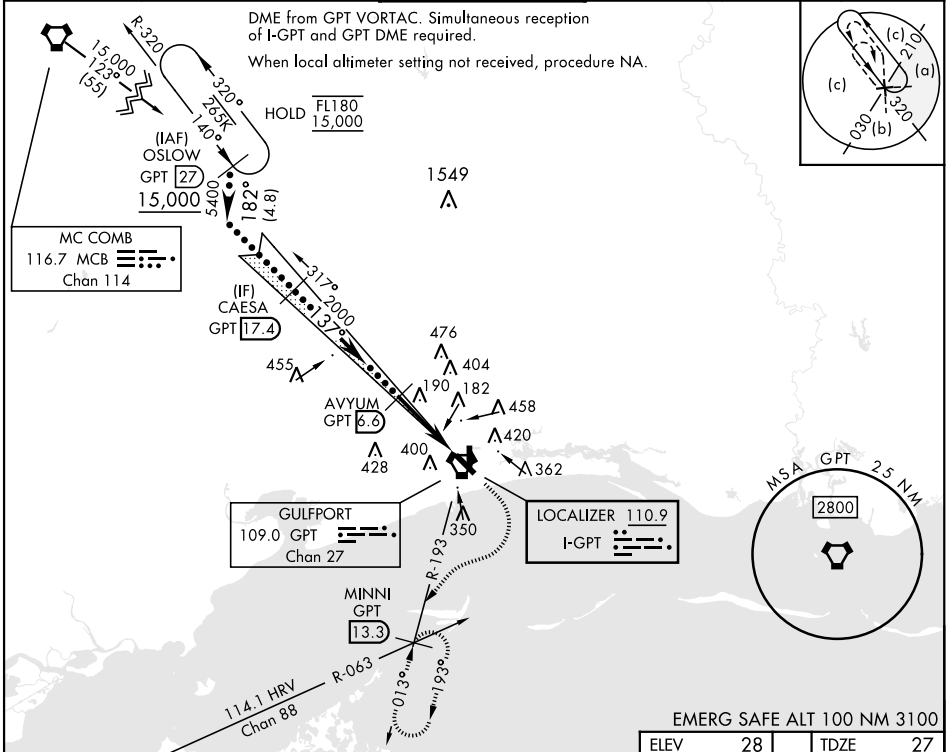
▼ \* When ALS inop, increase RVR to 40.  
RVR 18 authorized with use of FD or AP or HUD to DA.

▲ \*\* When ALS inop, increase vis to 1½ miles.

MALSRR

MISSED APPROACH: Climb to 500, then climbing right turn to 3000 on GPT VORTAC R-193 to MINNI/ GPT 13.3 DME and hold.

ATIS ★ <b>119.45</b>	GULFPORT APP CON <b>124.6 354.1</b> 130°-309° <b>127.5 254.25</b> 310°-129°	GULFPORT TOWER ★ <b>123.7</b> CTAF <b>0 339.8</b>	GND CON <b>120.4 348.6</b>	UNICOM <b>122.95</b>	ASR
-------------------------	---	--	-------------------------------	-------------------------	-----



CATEGORY	C	D	E
S-ILS 14 *	227/24	200	(200-½)
S-LOC 14 **	560/55	533	(600-1)
CIRCLING	820-2¼ 792 (800-2¼)	820-2½ 792 (800-2½)	820-2¾ 792 (800-2¾)

GULFPORT, MISSISSIPPI  
Amdt 7A 16MAY24

30°24'N-89°04'W

GULFPORT-BILOXI INTL (KGPT)

# HI-ILS Y or LOC Y RWY 14

SC-4, 11 JUL 2024 to 08 AUG 2024

SC-4, 11 JUL 2024 to 08 AUG 2024