

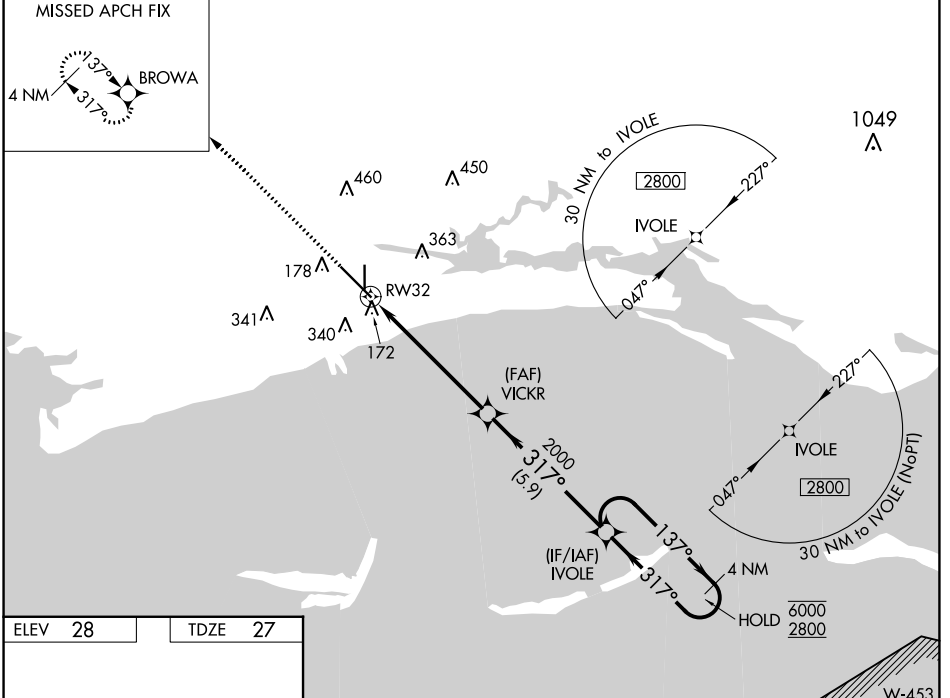
WAAS CH <b>56207</b> <b>W32A</b>	APP CRS <b>317°</b>	Rwy Idg <b>9002</b> TDZE <b>27</b> Apt Elev <b>28</b>
--	------------------------	---

# RNAV (GPS) RWY 32

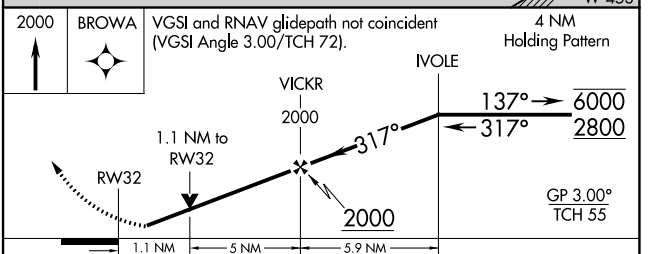
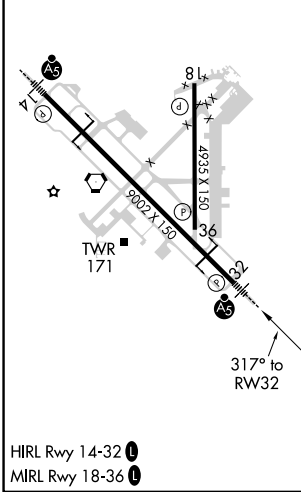
GULFPORT-BILOXI INTL (GPT)

RNP APCH-GPS	<p><b>⚠</b> Rwy 32 helicopter visibility reduction below RVR 4000 NA. Inop table does not apply to LPV. For uncompensated Baro-VNAV systems, LNAV/VNAV NA below -3°C or above 54°C. For inop ALS, increase LNAV Cat A/B visibility to RVR 5500, and Cat C/D to RVR 6000.</p>	MALS R	MISSED APPROACH: Climb to 2000 direct BROWA and hold.
--------------	--	--------	--

ATIS <b>119.45</b>	GULFPORT APP CON * <b>127.5 254.25</b>	GULFPORT TOWER * <b>123.7 (CTAF) 0 339.8</b>	GND CON <b>120.4 348.6</b>	UNICOM <b>122.95</b>
-----------------------	---	---	-------------------------------	-------------------------



ELEV 28	TDZE 27
---------	---------



CATEGORY	A	B	C	D
LPV DA		277/40	250 (300-¾)	
LNAV/VNAV DA		466/40	439 (500-¾)	
LNAV MDA		440/40	413 (500-¾)	
<b>C</b> CIRCLING	520-1 492 (500-1)	640-1 612 (700-1)	760-2 732 (800-2)	760-2¼ 732 (800-2¼)

SC-4, 11 JUL 2024 to 08 AUG 2024

SC-4, 11 JUL 2024 to 08 AUG 2024